

FIELD NOTES ON THE ORIOLE MINE,
WAR BONNET COPPER MINING
DISTRICT, CONVERSE COUNTY, WYOMING

by

W. Dan Hausel

1982

The Oriole Mine occurs in the SE $\frac{1}{4}$ sec. 10, T.29N., R.75 W. of the Warbonnet Copper district of Converse County, Wyoming (Figure 1). The mine lies east of the Cold Spring Road adjacent to La Prele Creek.

Two shallow shafts were sunk on intensely fractured and silicified mafic rock hosted by granite. Prominent ore minerals found on the mine dump include pyrite, chalcopyrite, and malachite. A selected sample of mineralized mafic rock assayed 1.11 percent copper (Figure 2). Spencer (1916, p. 76) reported that several hundred tons of rock carrying as much as 3 percent copper had been shipped from this Property.

REFERENCE

Spencer, A.C., 1916, The Atlantic Gold district and the north Laramie Mountains, Fremont, Converse, and Albany Counties, Wyoming: U.S. Geological Survey Bulletin 626, 178 p.

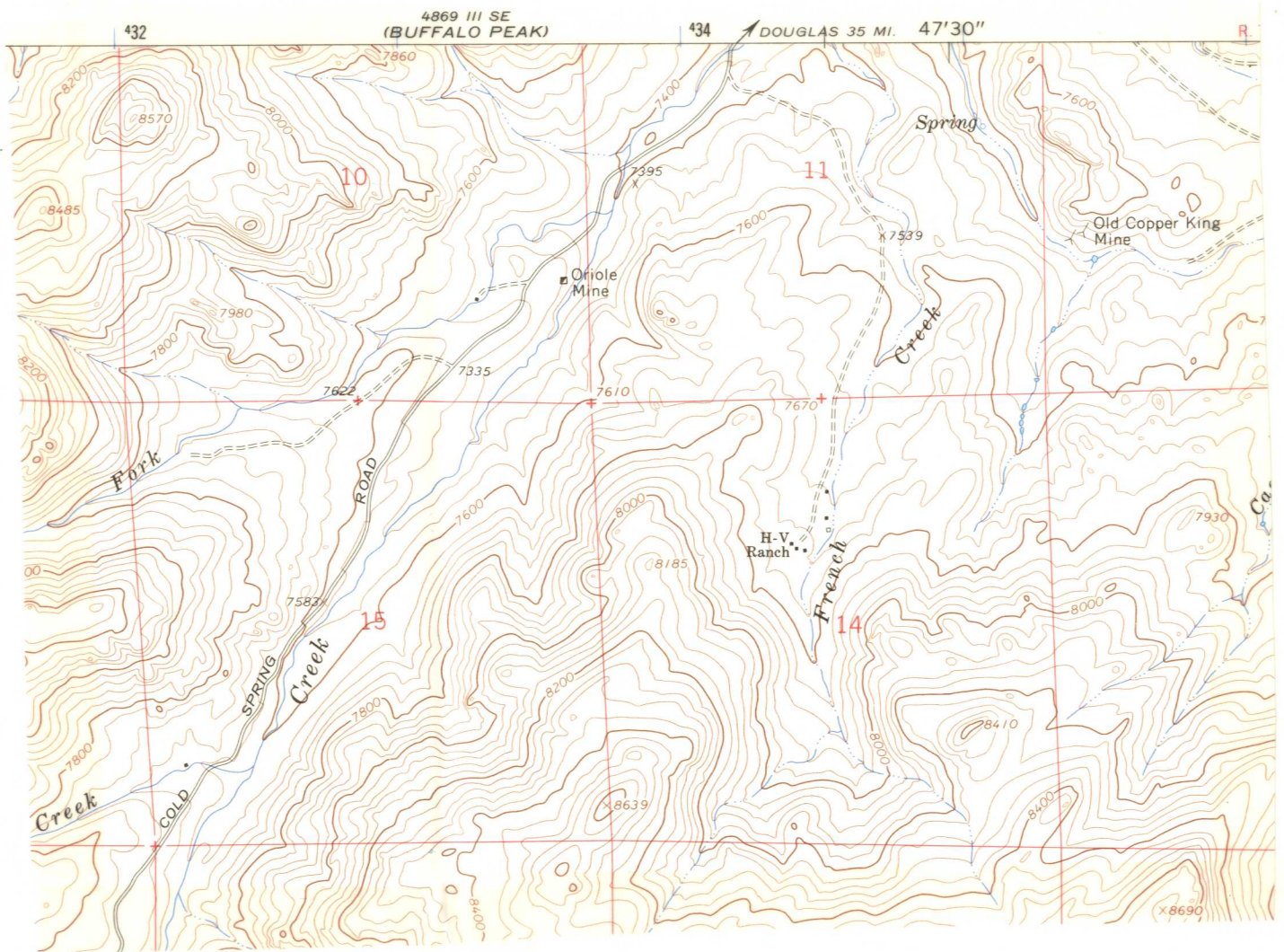


Figure 1. Location map of the Oriole Mine (base map U.S. Geological Survey Warbonnet Peak 7½-minute quadrangle).



WYOMING ANALYTICAL LABORATORIES, INC.

Box 638 • 605 South Adams

(307) 742-7995

LARAMIE, WYOMING 82070

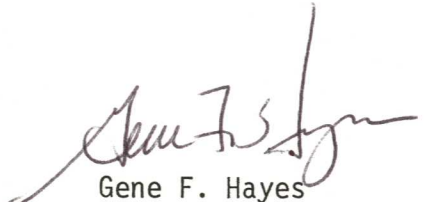
Dan Hausel
Wyoming Geological Survey
Box 3008, Univ. Sta.
Laramie, WY 80434

Request No. 1349-063
Date: 13 October 1982

REPORT OF ANALYSIS

	(29-14-85)	(sec. 1, 15.79.)	(10-29-75)	(3-10, 28N, 71W)	HP-18,
Customer ID	BP-1, Portland	CR-3-13-14,	ES-1, Oriole	ES6-8, Tender-	Fletcher
Lab No.	Mine 9859	Mother Lode 9860	Mine 9861	foot Mine 9862	Park 9863
Gold	oz/ton <0.01	<0.01	--	<0.01	<0.01
Copper	% 2.75	--	1.11	--	0.135
Platinum	oz/ton --	<0.01	--	--	--
Silver	oz/ton --	--	--	--	<0.01
Zinc	mg/L 81.4	--	--	--	46.9

Sample ES-1. Silicified mafic rock containing visible pyrite cubes, chalcopyrite, and some malachite.


Gene F. Hayes
Laboratory Director