

Appendix 2. Photographs from the potential Sixmile Basin RNA.

PHOTOGRAPHIC RECORD

GEORGE P. JONES

(See FSM 1643.52)

HEADQUARTERS UNIT

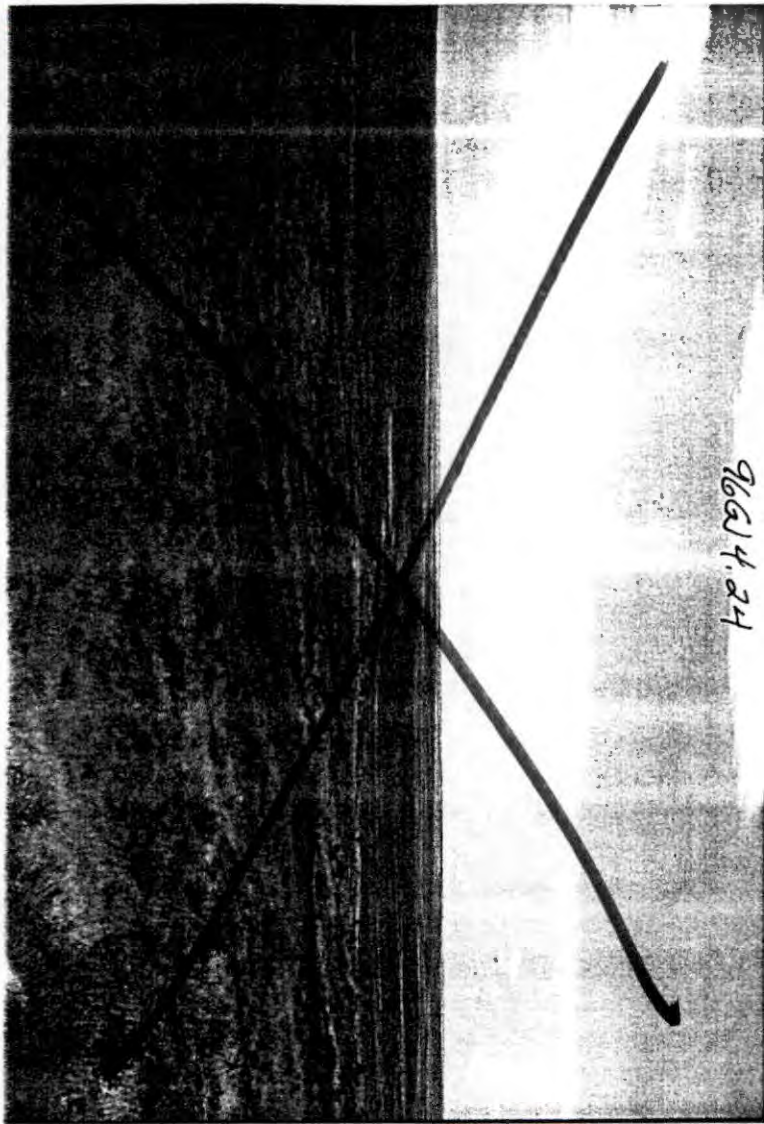
LOCATION

INITIAL DISTRIBUTION OF PRINTS AND FORM 1600-11

WO RO DIV. FOREST DISTRICT PHOTOGRAPHER Date _____

INSTRUCTIONS: Submit to Washington Office in quadruplicate. Permanent numbers will be assigned and the forms will be distributed as follows: (1) Washington Office, (2) RO or Station, (3) Forest or Center and (4) Photographer.

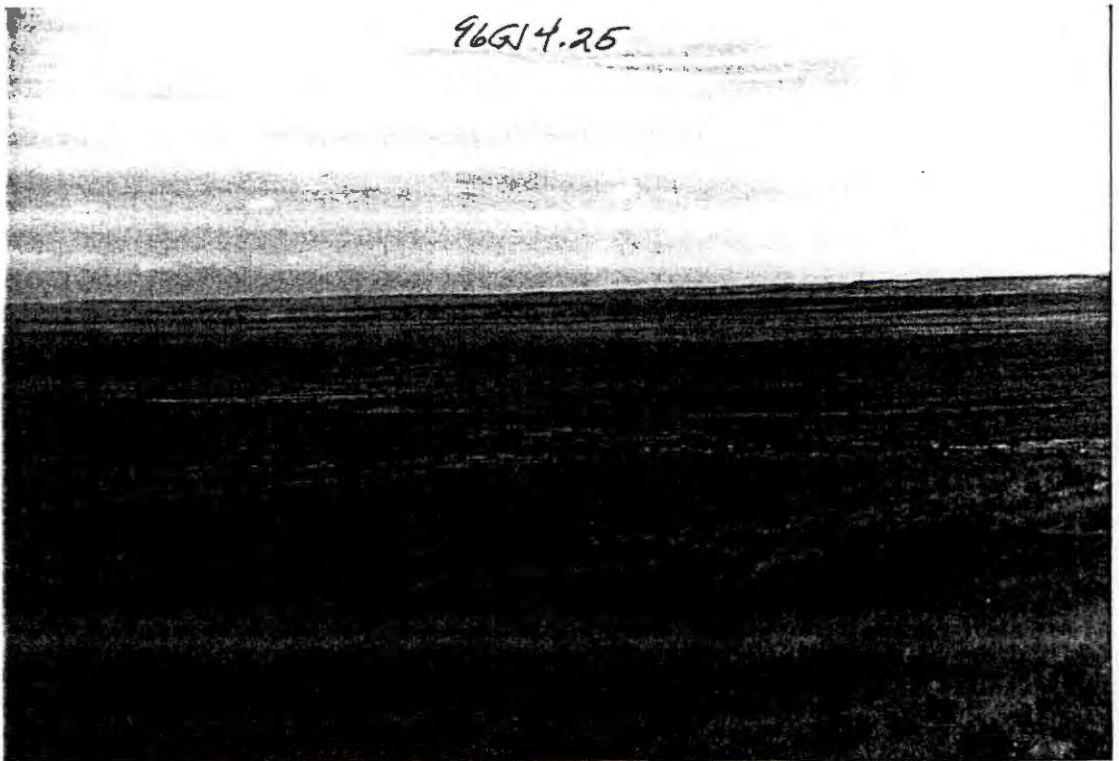
PHOTOGRAPH NUMBER		SELECTED FOR W.O. PHOTO LIBRARY	DATE OF EXPOSURE	LOCATION (State, Forest, District and County)	CONCISE DESCRIPTION OF VIEW	NEGATIVE (Show size and DW for black and white or C for color)
TEMP.	PERMANENT (To be filled in by the W.O.)					
(1)	(2)	(3)	(4)	(5)	(6)	(7)
96 GJ 4.23			8-30-96	Wyoming, Thunder Basin NG, Douglas RD, Weston Co; potential Sixmile Basin RNA	View SW from northern side of potential RNA. Foreground is western wheatgrass / blue grama assoc. w/ scattered big sagebrush; midground + distance primarily western wheatgrass / green needlegrass assoc. light-colored patches are areas dominated by <u>Bromus japonicus</u> .	1" x 1 1/2" C
96 GJ 4.25			ditto	ditto	View S along length of potential RNA; northern boundary follows fence in foreground. Vegetation is mix of western wheatgrass / green needlegrass assoc. + big sagebrush / western wheatgrass assoc. (gray patches). Light-colored patch in left mid-ground is <u>Bromus japonicus</u> . Telephoto view.	ditto



96GJ4.24



96GJ4.25



96GJ4.25