

## GEOLOGICAL SURVEY OF WYOMING

## FIELD NOTES ON THE HUB PROSPECT, CARBON COUNTY, WYOMING

by

W. Dan Hausel

1983

Following a report that the Hub prospect contained visible gold and material assayed 10 ounces of gold per ton (Paul Graff, personal communication, 1982) I decided to examine the prospect myself.

The Hub prospect occurs in section 6, T.15N., R.87W. of the Sierra Madres. The prospect is developed along a 1½-foot wide, steeply dipping quartz vein associated with shearing in amphibolite. The amount of mine workings is small. A sample of cupriferous quartz vein was selected from the mine dump for assay. The sample ran 0.41 percent copper, <0.01 ounces per ton gold, and 4.4 ounces of silver per ton.

Overall, the prospect looks small and of limited tonnage.



# WYOMING ANALYTICAL LABORATORIES, INC.

Box 638 • 605 South Adams

(307) 742-7995

LARAMIE, WYOMING 82070

Dan Hausel  
Wyo. Geo. Survey  
Box 3008, University Station  
Laramie, WY 82071

Request No.: 1788-063  
Date: September 15, 1983

## REPORT OF ANALYSIS

Customer ID	AM-1-83 8/26/83	Hub Mine HBM -3-83, 7/27/83	DPM-24-83	De Pass, DPM-26-83 Chip sample 8/26/83
Lab No.	A1873	A1874	A1875	A1876
Gold	oz/ton	<0.01	<0.01	<0.01
Copper	%	1.37	0.96	1.79
Silver	oz/ton	2.9	<0.1	<0.1
Nickel	mg/kg	--	--	74.0

*Sonja G. Ringen*

Sonja G. Ringen  
Chemist

Sample HBM-3-83 - This sample was a selected sample of cupiferous quartz vein from the mine dump. Chalcopyrite and malachite were visible. The prospect was developed along a 1 1/2-foot wide quartz vein associated with shearing in meta-amphibolite - Located in sec 6, T.15N., R.87W.

Paul Bruff, personal communication, reported visible gold and ~~an~~ an assay then ran 10 ounces of gold/ton. No gold seen during my examination. D.H.

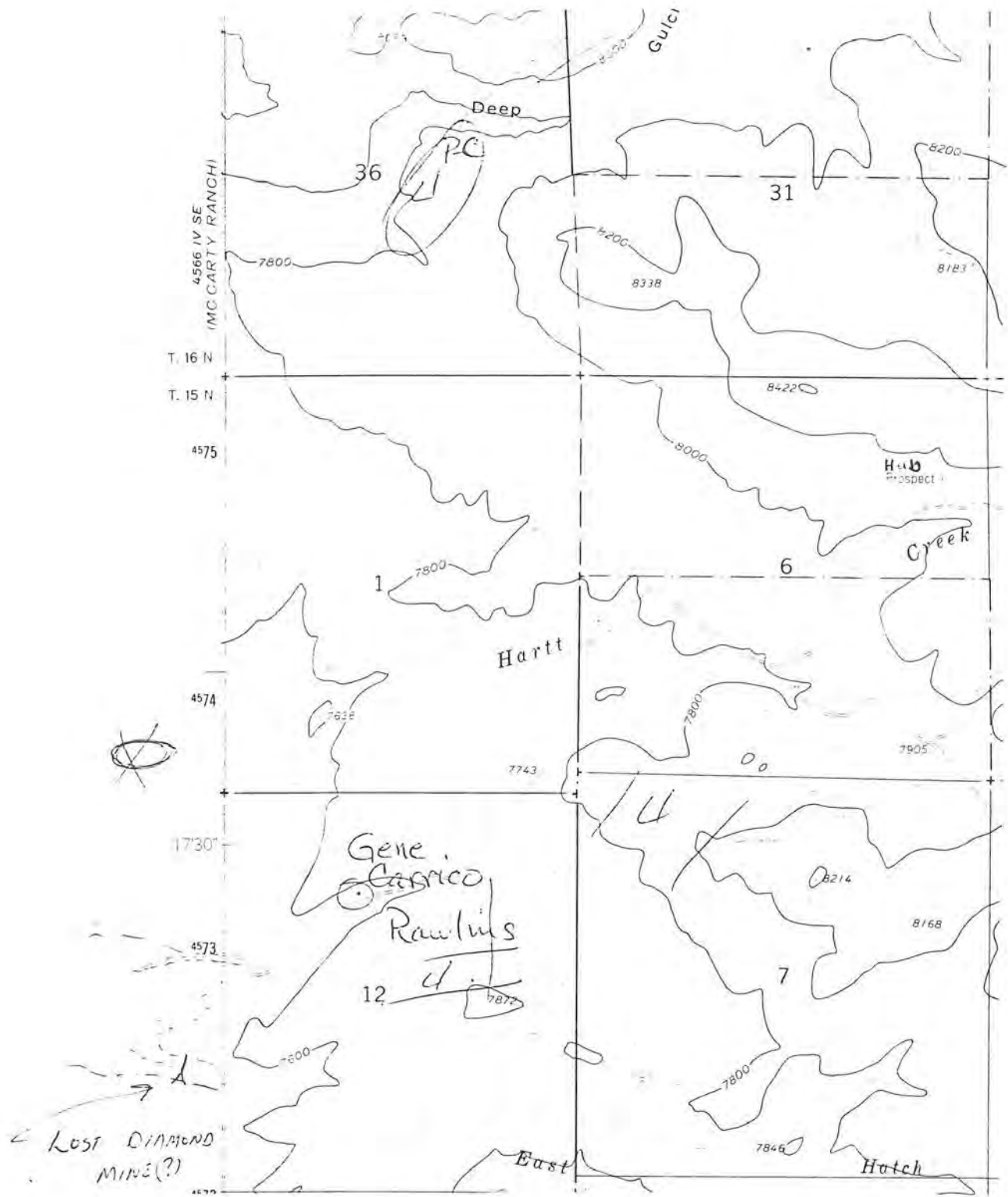


Figure 1. Location map of the Hub prospect (base map U.S. Geological Survey Divide Peak 7½-minute quad.).