



THE GEOLOGICAL SURVEY OF WYOMING

UNIVERSITY OF WYOMING
BOX 3008, UNIVERSITY STATION
LARAMIE, WYOMING 82071

(307) 742-2054 (307) 721-3920 (307) 766-2286

DEPUTY DIRECTOR AND STAFF GEOLOGIST
-MINERALS (HARD ROCK)
W. DAN HAUSEL

STAFF GEOLOGISTS
JAMES C. CASE
-HAZARDS
RODNEY H. DE BRUIN
-PETROLEUM
RAY E. HARRIS
-MINERALS (SOFT ROCK)
RICHARD W. JONES
-COAL
ALAN J. VER PLOEG
-STRATIGRAPHY

LABORATORY TECHNICIAN
JAY T. ROBERTS

LABORATORY REPORT

Client Sample No.: as listed

GSW Lab No.: 870707

Client: Dan Hausel

Sample Description: Tabor Grand channel and chip samples

Analyses Requested: Au, Ag

Methods & Results: aqua regia attack, AAS, (Au in MIBK)

Sample No.	Au, ppm	Ag, ppm	Sample No.	Au, ppm	Ag, ppm
TG-1-87	.09	---	TG-16-87	2.3	---
TG-2-87	.68	---	TG-17-87	4.6	---
TG-3-87	.09	---	TG-18-87	3.0	---
TG-4-87	.15	---	TG-19-87	.74	---
TG-5-87	3.6	---	TG-20-87	.12	---
TG-6-87	5.3	---	TG-21-87	.10	---
TG-7-87	7.0	---	TG-22-87	58.	4.7
TG-8-87	22.	---	TG-23-87	8.6	2.5
TG-9-87	5.2	---	TG-24-87	1.7	---
TG-10-87	2.1	---	TG-25-87	.06	---
TG-11-87	1.9	---	TG-26-87	.81	---
TG-12-87	8.7	---	TG-27-87	2.2	---
TG-13-87	4.4	---	TG-28-87	.05	---
TG-14-87	14.	---	TG-29-87	.07	---
TG-15-87	9.1	---	TG-30-87	4.8	---

--- Less than 2.0 ppm Ag

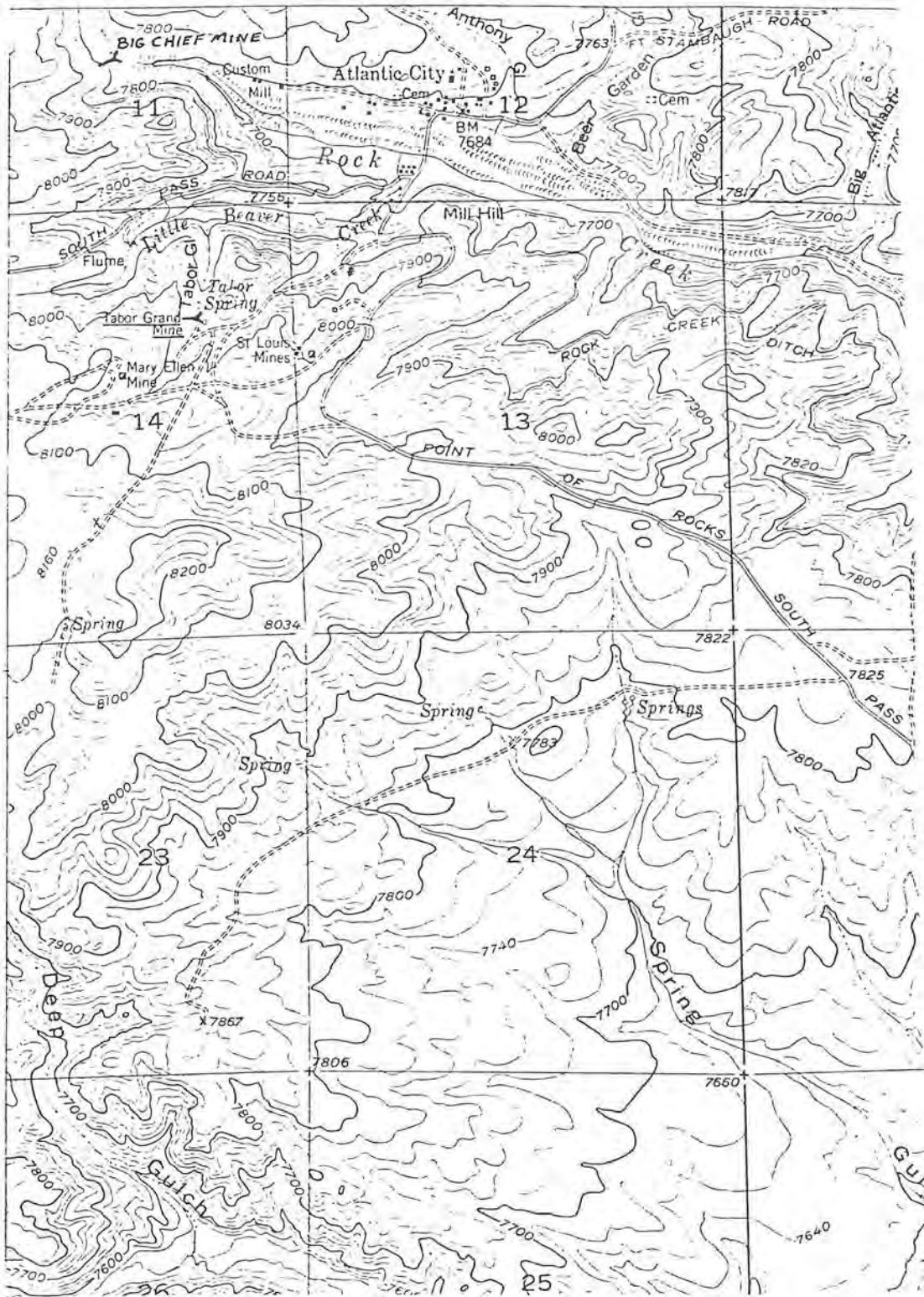
Analyst: Jay Roberts

Date: July 29, 1987

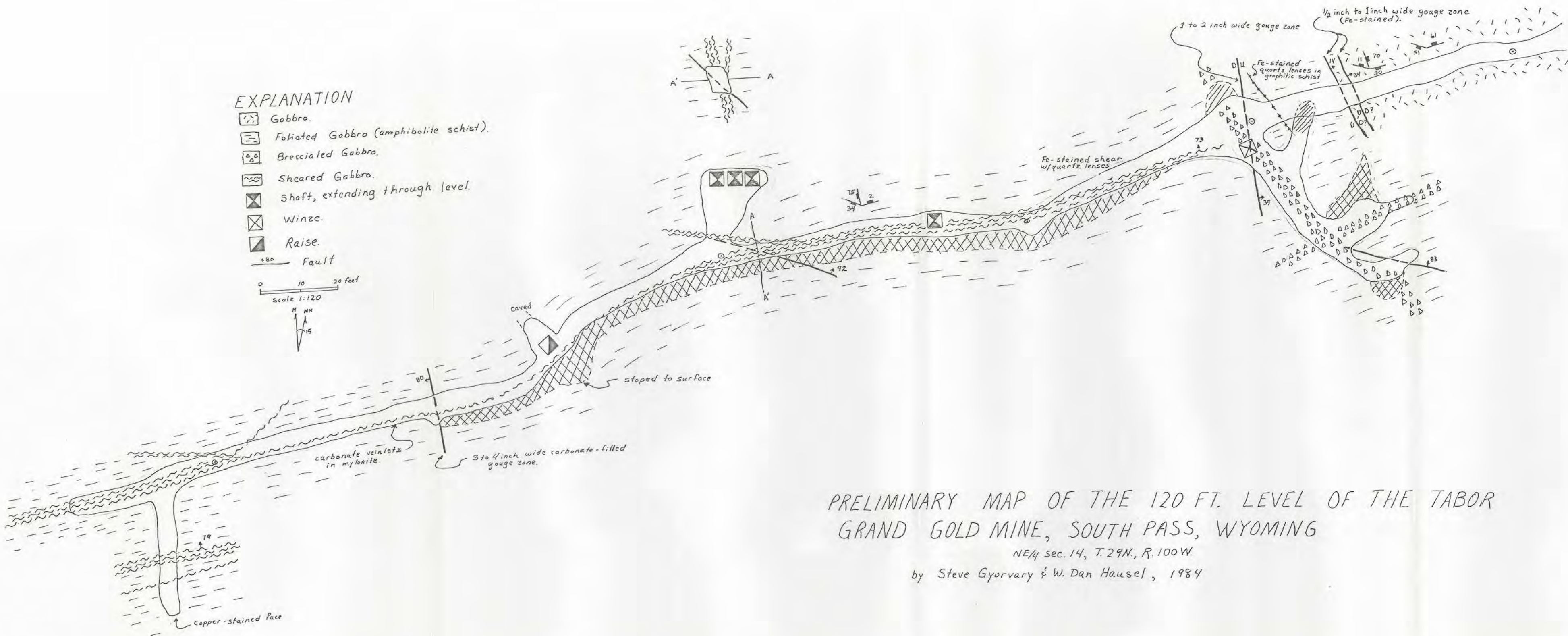
Excess Sample: returned discarded XXX store 6 months, discard store perm

GSW Lab No.: 870707

GEOLOGICAL SURVEY OF WYOMING



Location map for the Tabor Grand Mine (sec.14,T29N.,R100W.).



PRELIMINARY MAP OF THE 120 FT. LEVEL OF THE TABOR
 GRAND GOLD MINE, SOUTH PASS, WYOMING

NE/4 sec. 14, T.29N., R.100W.

by Steve Gyoryvary & W. Dan Hausel, 1984