

GEOLOGICAL SURVEY OF WYOMING
MINERAL REPORT # MR81-1

PEG Copper Claims, Rennecker Peak (Christina Lake Quad)

Introduction

On Sunday, August 30, 1981, I was accompanied by Elmer Winters (City Attorney of Rock Springs) in the field to examine reported copper mineralization on a kimberlite (?) dike. According to Mr. Winters, samples of the mafic rock were examined by Walter Ackerman and pronounced to be kimberlitic. The PEG claims are staked in section 34, T. 30 N., R. 101 W.

Geology and Mineralization

The copper mineralization was developed by three small open pits, or shafts, on a contact between a east-west trending metagabbro-metabasalt dike with the host Louis Lake granodiorite-quartz diorite. The mineralization was predominately chalcopyrite disseminated in the mafic dike and chalcopyrite in epidotized nodules (xenoliths?) within the granodiorite. The mineralization appears to be restricted with only small tonnages (No kimberlitic rocks were present). Samples of the rock are labeled PEG-1 and stored in the State Survey's collection.

The prospects were reported by Mr. Winters, to have been developed during the early 1900's by Mr. Rennecker, a prospector from the east. No other history is available.

Signed,



W. Dan Hausel
Deputy Director &
Minerals Geologist

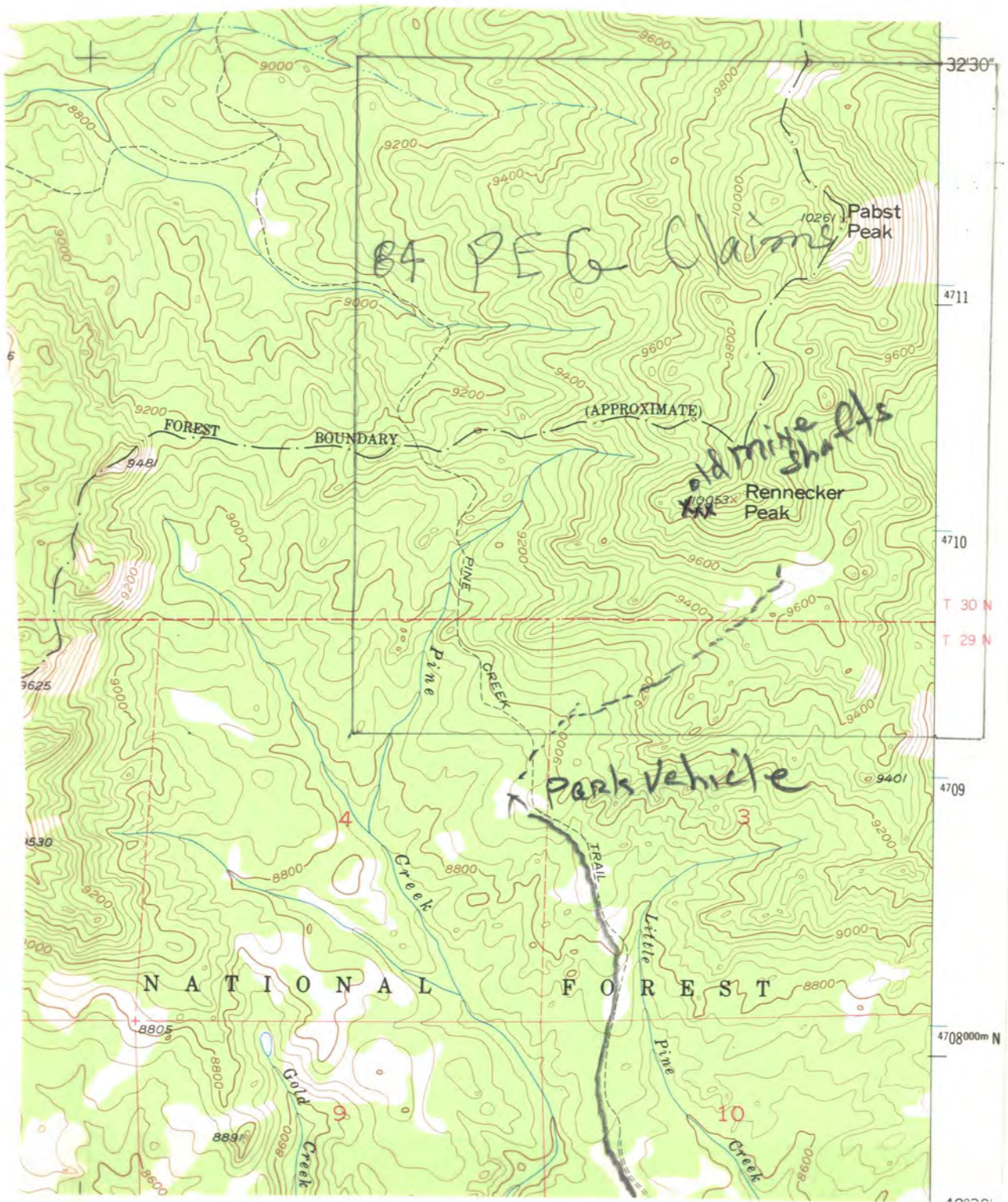


Figure 1. Location map of the PEG copper prospect (base from U.S. Geological Survey Christina Lake Quad.)