

**“YOU COMPLETE ME”:
LGBTQ IDENTITY AND ROMANTIC
RELATIONSHIPS IN *GLEE***

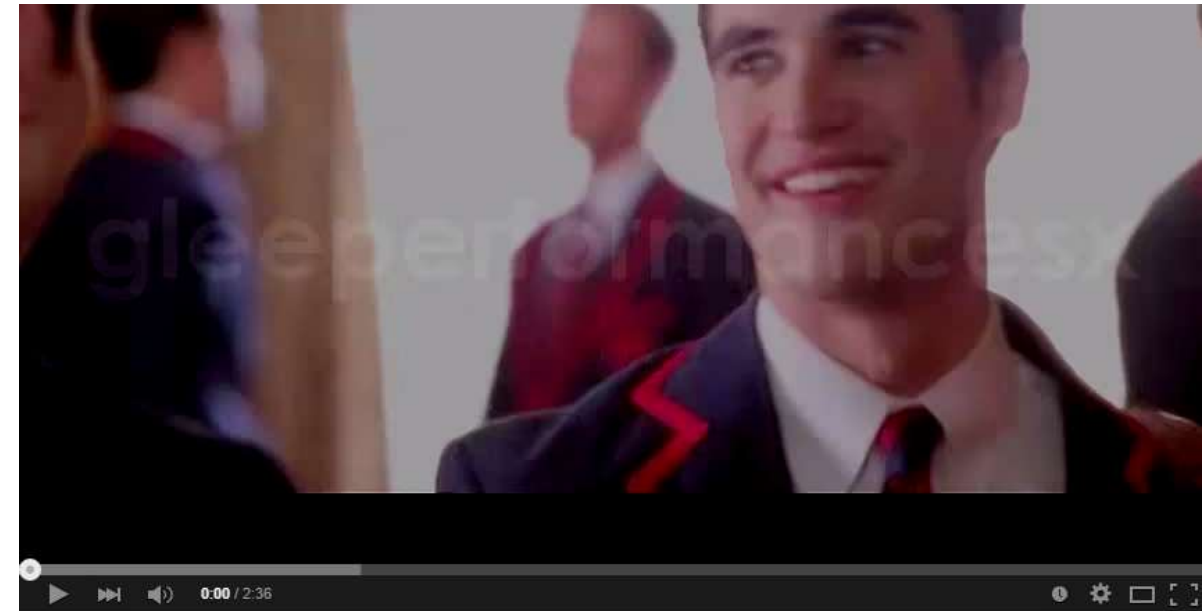


Ashley Hildebrandt



OVERVIEW

- LITERATURE
- RESEARCH QUESTIONS
- *GLEE*
- METHOD
- TURNING POINTS
- TRAJECTORY
- LIMITATIONS
- FUTURE DIRECTIONS



Glee - Teenage Dream (Full Performance)



Full Glee Performances

Subscribe 7,190

4,298,759

+ Add to < Share ... More

15,673 296

EMERGING ADULTS

- Defined as 18-25 years old
- Time of experimentation; high demographic variability
- Highly affected by relationships and changing identities



LGBTQ IDENTITY

Lesbian

Gay

Bisexual

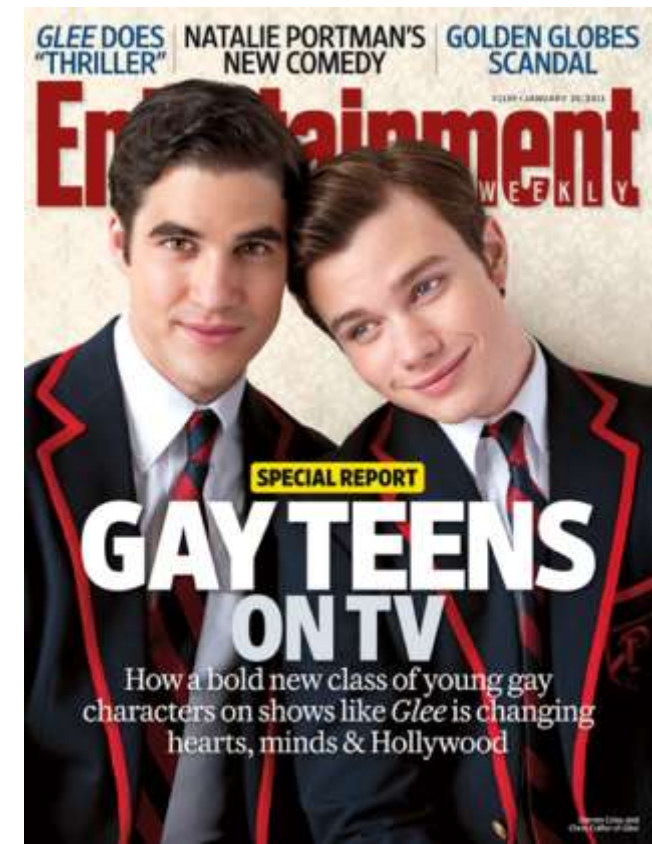
Transgender

Queer



REPRESENTATION IN MEDIA

- Form ideas and expectations; interpret own experiences
- Sexual Scripts
- Lack of LGBTQ role models
- *Glee* fandom



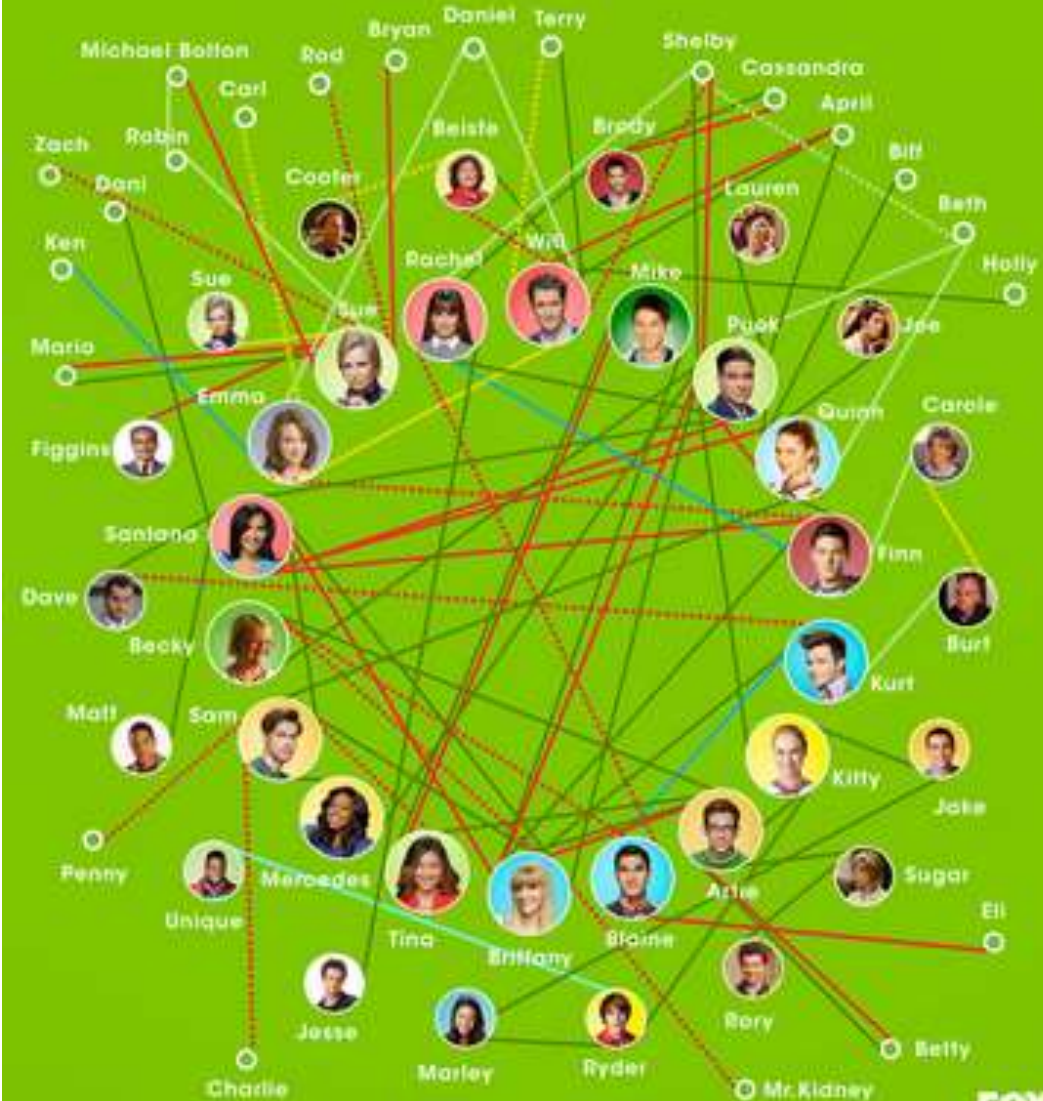
RELATIONSHIPS

- Turning Points
 - Any event that changes the direction or commitment of a relationship
- Trajectory

McKinley Matchmaking

Charting every glee relationship ever

— Kissed — Sex — Dated — Collapsed — Engaged — Married — Divorced — Kid — Adopted



**RQ₁: WHAT TURNING POINTS
DO KURT AND BLAINE
EXPERIENCE IN THEIR
RELATIONSHIP?**

**RQ₂: WHAT RELATIONAL
TRAJECTORY DOES KURT AND
BLAINE'S RELATIONSHIP
EXEMPLIFY?**

glee

- Ran from 2009 to 2015
- 121 episodes of approximately 43 minutes each
- 742 songs performed



KURT + BLAINE

METHOD

- Traditional turning point research is done by self-report
- Watch every episode and identify turning points as interpreted by viewers
- Turning points increase or decrease in perceived commitment
- Modified Retrospective Interview Technique (RIT) to make trajectory graph



RQ₁: WHAT TURNING POINTS DO KURT AND BLAINE EXPERIENCE IN THEIR RELATIONSHIP?

SUPRATYPES	FREQUENCY (%)	SUBTYPE	FREQUENCY (%)
Relational Escalation	39 (35.1)	Discussion of Relationship	10 (25.6)
		Expression of Feelings	9 (23.1)
		Duet	6 (15.4)
		Serious Commitment	5 (13.9)
		Mutual Investment	4 (10.3)
		Relational Reconciliation	3 (7.69)
		New Partner Jealousy	1 (2.56)
		End of Post-Breakup Relationship	1 (2.56)
Relational De-Escalation	25 (22.5)	Conflict	10 (40)
		Letting Go	5 (20)
		Ex in New Relationship/ New Relationship	3 (12)
		Unsettled Feelings	2 (8)
		Ex/New Relationship Progresses	2 (8)
		Misunderstanding	1 (4)
		Relational Dissolution	1 (4)
		Relationship Trouble	1 (4)



RQ₁: WHAT TURNING POINTS DO KURT AND BLAINE EXPERIENCE IN THEIR RELATIONSHIP?

SUPRATYPES	FREQUENCY (%)	SUBTYPES	FREQUENCY (%)
Positive/Helpful Gestures	14 (12.6)	Support	9 (64)
		Sacrifice	3 (21)
		Social Support	1 (7.1)
		Compliment	1 (7.1)
Physical Experiences	7 (6.3)	Nonrelational Physical Encounter	3 (43)
		First physical encounter	1 (14)
		First Kiss	1 (14)
		First Sex	1 (14)
		Subsequent Physical Encounter	1 (14)
Get-to-know You Time	6 (5.4)	First date/meeting	3 (50)
		Self-disclosure	3 (50)
Relational Transgression	4 (3.6)	Infidelity	3 (75)
		Lying	1 (25)
Special Event(s)	3 (2.7)	Holiday	2 (66.7)
		Renewed Contact	1 (33.3)



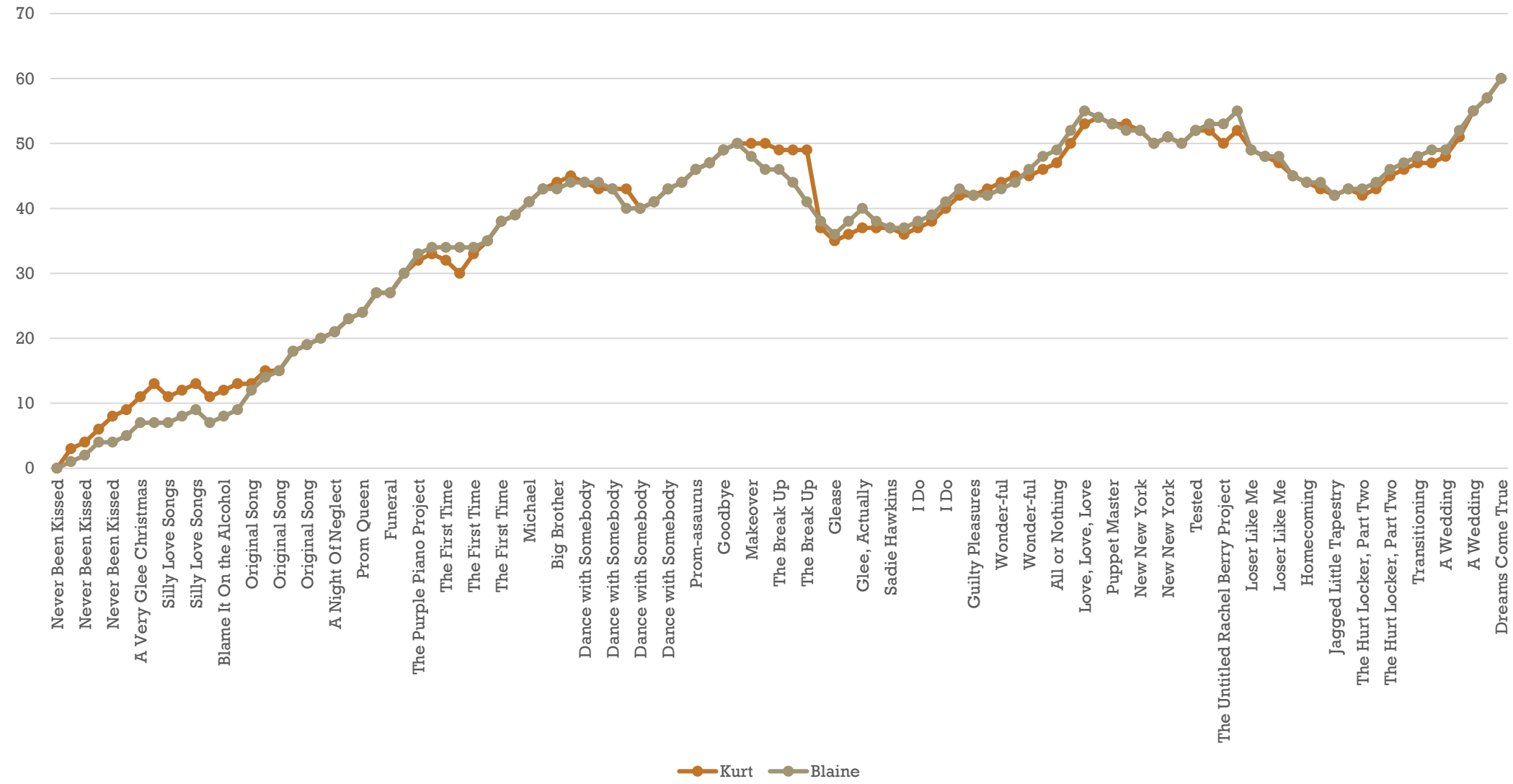
RQ₁: WHAT TURNING POINTS DO KURT AND BLAINE EXPERIENCE IN THEIR RELATIONSHIP?

SUPRATYPES	FREQUENCY (%)
Romantic Competition	4 (3.6)
Identity Re-Evaluation	2 (1.8)
Miscellaneous/Uncodable	2 (1.8)
Having Children	1 (.90)
Meeting Family	1 (.90)
Realization about the Relationship	1 (.90)
Serendipity	1 (.90)

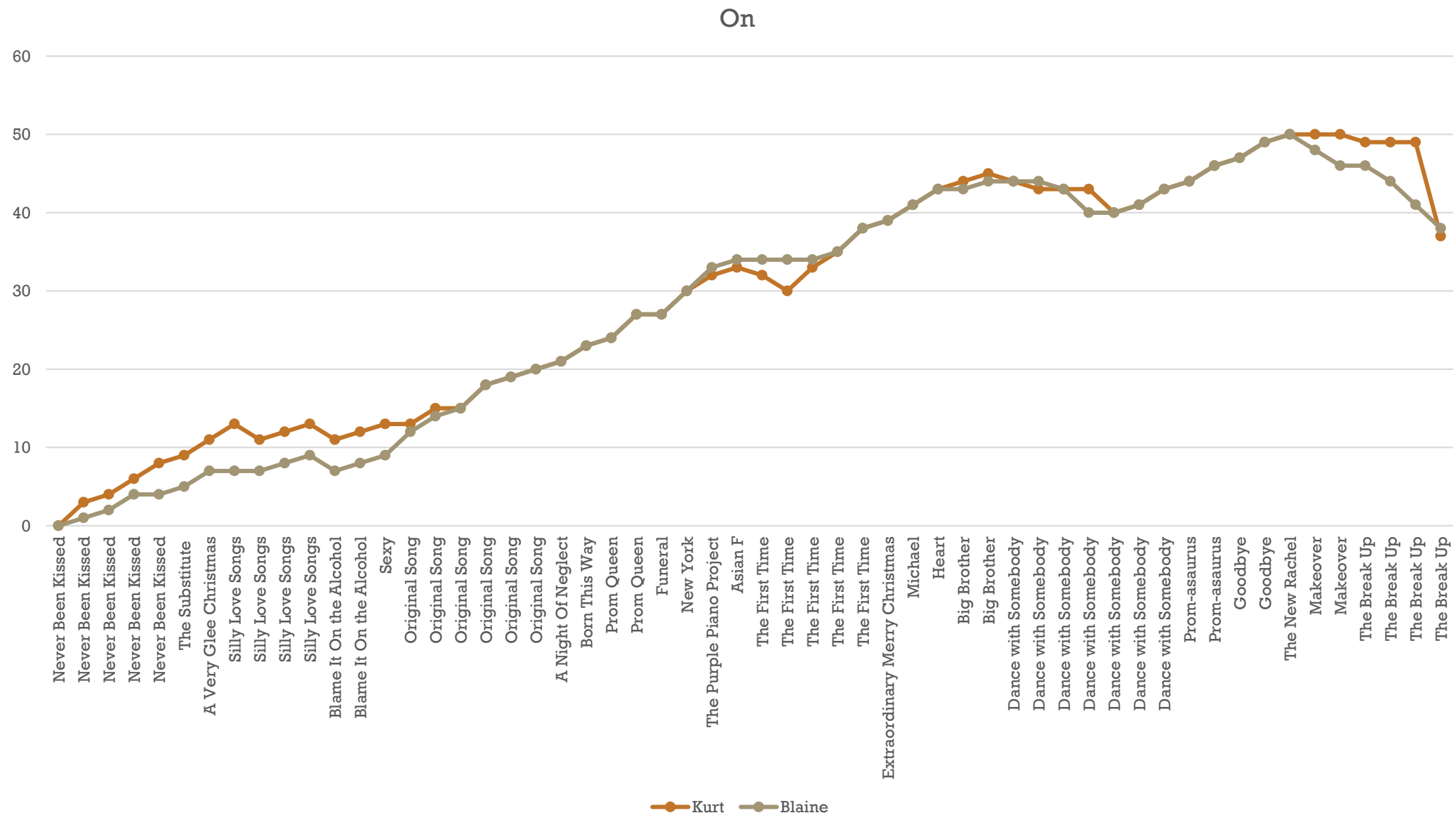


RQ₂: WHAT RELATIONAL TRAJECTORY DOES KURT AND BLAINE'S RELATIONSHIP EXEMPLIFY?

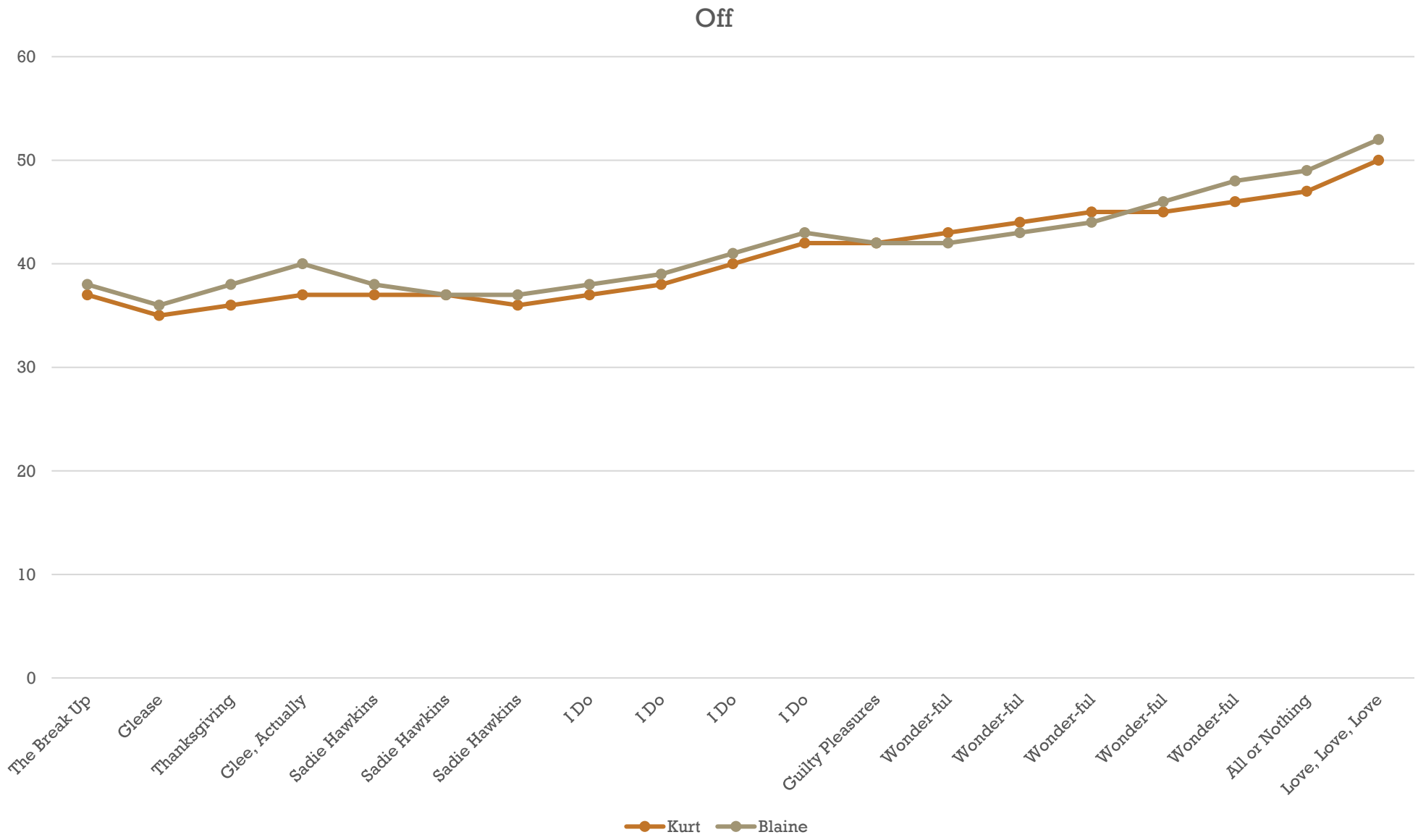
Relationship Trajectory



RQ₂: WHAT RELATIONAL TRAJECTORY DOES KURT AND BLAINE'S RELATIONSHIP EXEMPLIFY?

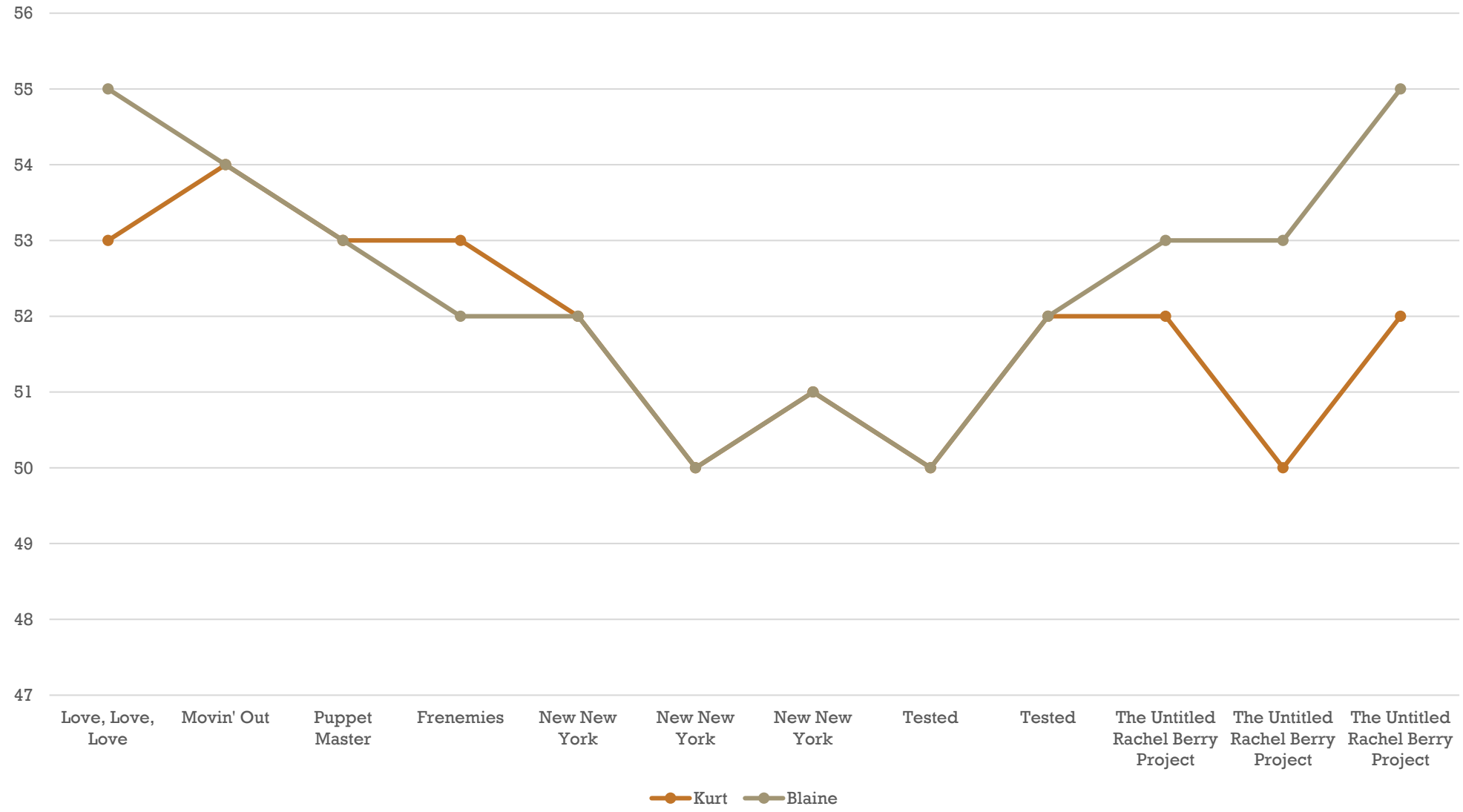


RQ₂: WHAT RELATIONAL TRAJECTORY DOES KURT AND BLAINE'S RELATIONSHIP EXEMPLIFY?

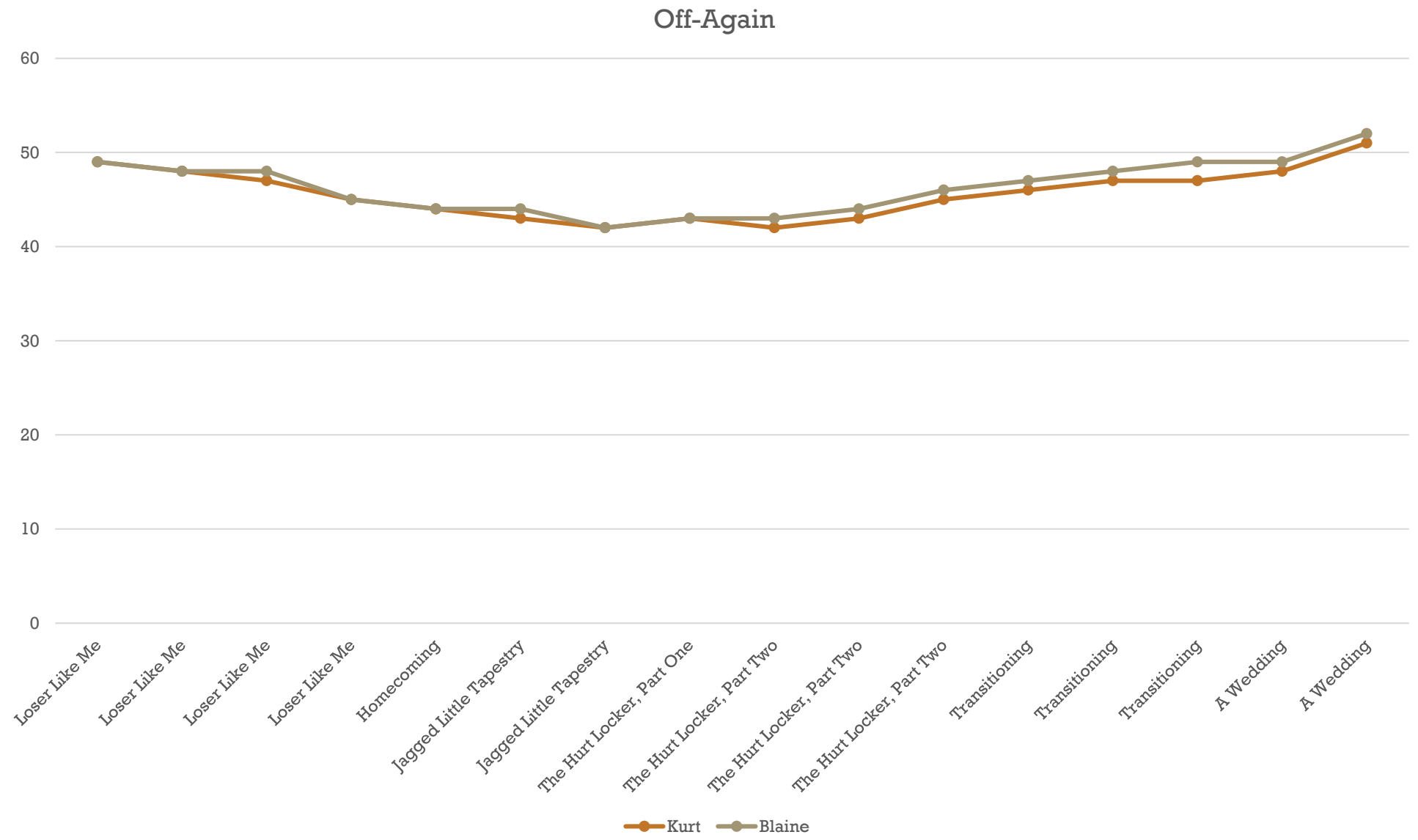


RQ₂: WHAT RELATIONAL TRAJECTORY DOES KURT AND BLAINE'S RELATIONSHIP EXEMPLIFY?

On-Again



RQ₂: WHAT RELATIONAL TRAJECTORY DOES KURT AND BLAINE'S RELATIONSHIP EXEMPLIFY?





DISCUSSION

- Turning points and trajectories in line with what is predicted by research.
- Who will be the role model?
- Realistic turning points.



LIMITATIONS

- Not every character on a TV show has a large part in every episode.
- FOX must comply with television rules and standards.
- Negativity makes ratings.



FUTURE DIRECTIONS

- Other viewers identify turning points.
- Interview LGBTQ viewers about *Glee*.
- Compare to other relationships on TV.



A close-up photograph of two young men with dark hair, wearing dark suits, white shirts, and patterned ties. They are both smiling slightly and looking towards the camera. The man on the left is slightly behind the man on the right.

CONCLUSION

- **Need more research and role models**
- **Important for emerging adults**
- **What will be the next *Glee*?**

QUESTIONS?



THANK YOU!



Ashley Hildebrandt
adallum@uwyo.edu