

ROBERT'S RANCH COPPER PROSPECT, SHERMAN MOUNTAINS,  
ALBANY COUNTY, WYOMING

by  
W. Dan Hausel  
1982

During the fall of 1982, the Robert's Ranch copper prospect was briefly examined by myself and Gordon Marlatt, geologist, from Laramie. The prospect is in the S $\frac{1}{2}$  sec. 23, T13N, R71W, of the Sherman Mountains 15-minute quadrangle (Figure 1). The prospect consists of a shallow caved shaft and a collapsed adit along the adjacent Duck Creek drainage. The mineralization occurs as cupriferous northwest trending shears in Sherman Granite. Some secondary chrysocolla and cuprite were found on the mine dump with disseminated pyrite and chalcopyrite. One selected sample, #GQ 82-1, assayed 2.37 percent copper and 0.01 ounces of gold per ton (Figure 2). The mineralization and tonnage appears restricted and small, based on outcrop exposure.

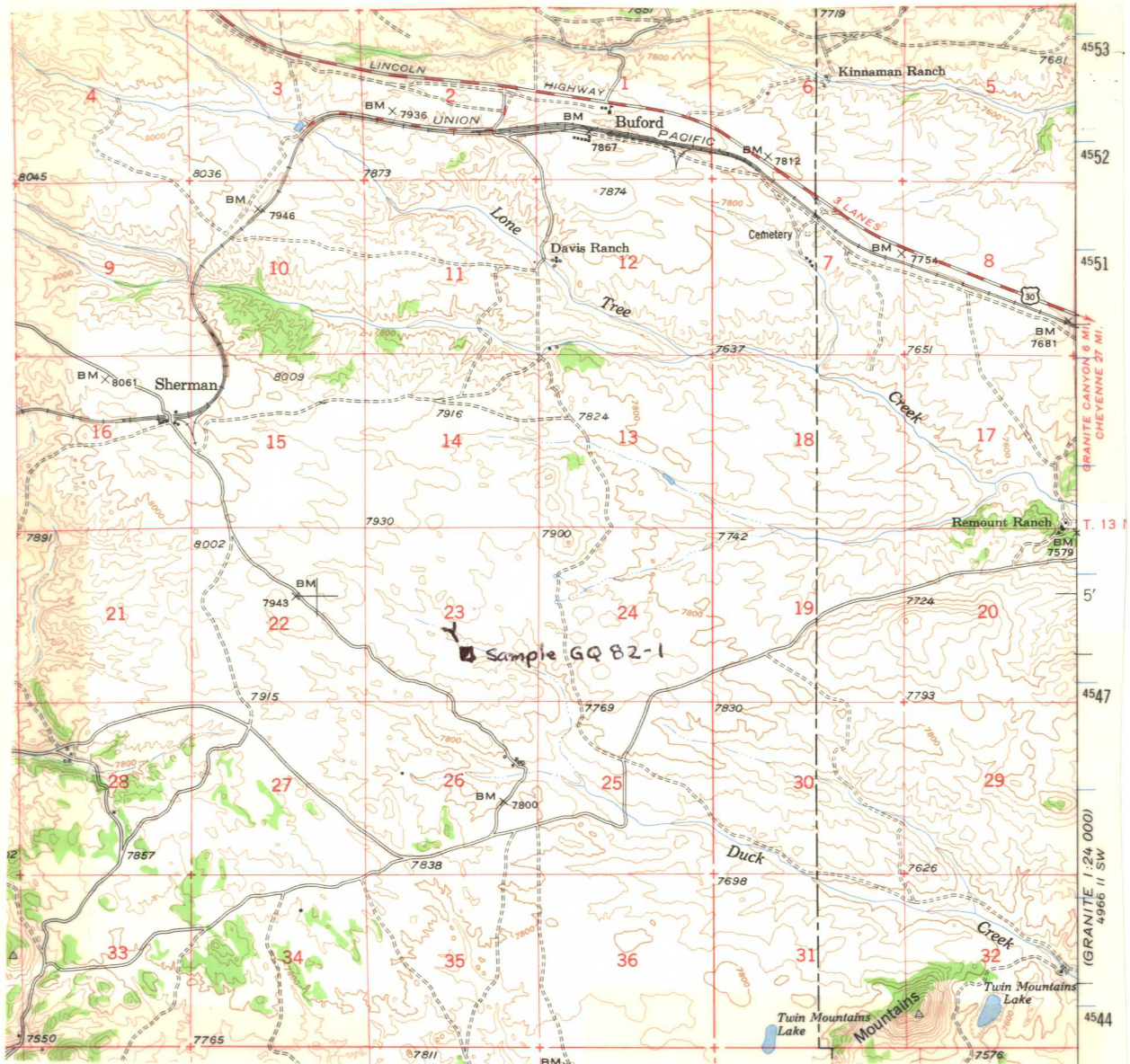


Figure 1. Location map of the Robert's Ranch copper prospect. Base map from U.S. Geological Survey Sherman Mountains 15-minute quadrangle, 1948.



## WYOMING ANALYTICAL LABORATORIES, INC.

Box 638 • 605 South Adams

(307) 742-7995

LARAMIE, WYOMING 82070

Dan Hausel  
Wyo. Geological Survey  
Box 3008, Univ. Sta.  
Laramie, WY 82070

Request No. 1290-063  
Date: 26 August 1982

### REPORT OF ANALYSIS

Customer ID		GQ 82-1, 5/2 23-13-71 (Roberts Ranch)
Lab No.		9456
<hr/>		
Gold	oz/ton	0.01
Copper	%	2.37

---

Figure 2. Assay report of selected cupriferous granite sample #GQ 82-1.

---