

MINERAL REPORT #MR 83-6

ASSAY REPORT ON SAMPLES COLLECTED FROM THE CARIBOU GOLD MINE,  
SOUTH PASS DISTRICT, WYOMING

by

W. Dan Hausel

1983

Two samples collected from the Caribou Mine and a third from a prospect to the southwest of the Caribou were tested for precious metals. These mines are located on the Miners Delight 7½ minute quadrangle in T.29N., R.100W. (Figure 1).

Sample #CBU-2-83 was collected from a mine dump located south of the Caribou Mine in the SE¼ SW¼ section 1, T.29N., R.100W. This sample contained no detectable gold.

Sample #CBU-1-83, and sample #SP-5-83 were assayed for precious metals. Both samples were selected; CBU-1-83 was a piece of gossan-stained quartz, and SP-5-83 was a piece of limonite-stained metagraywacke. Sample CBU-1-83 assayed 0.33 ounces per ton in gold, and SP-5-83 assayed 0.03 ounces per ton silver with no detectable gold (Figure 2).



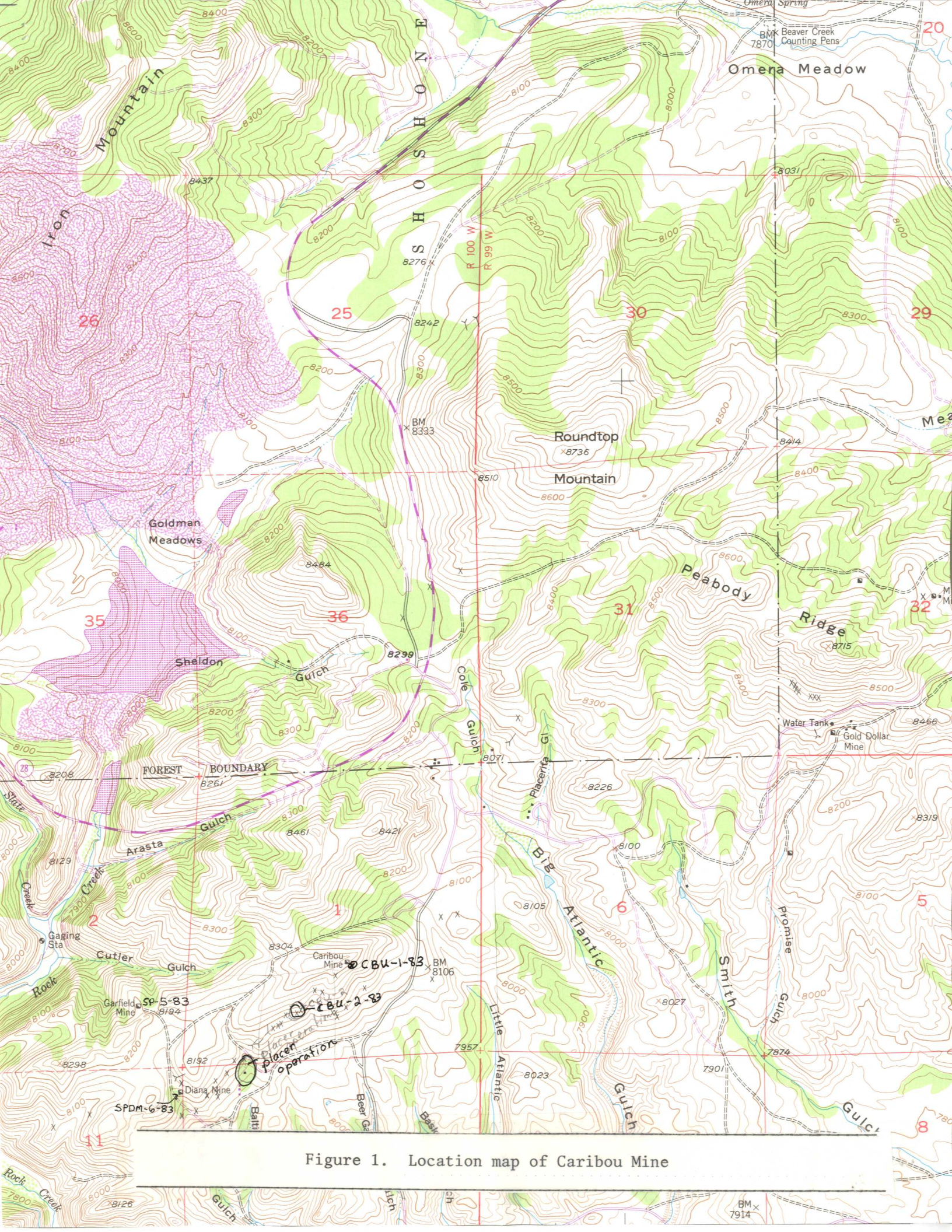


Figure 1. Location map of Caribou Mine



Figure 2. Assay reports on Caribou Mine samples



**WYOMING ANALYTICAL LABORATORIES, INC.**

Box 638 • 605 South Adams

(307) 742-7995

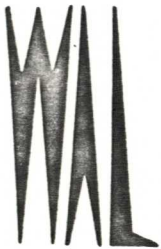
LARAMIE, WYOMING 82070.

Dan Hausel  
Wyoming Geological Survey  
Box 3008, University Station  
Laramie, WY 82071

Request No.: 1866  
Date: December 14, 1983

REPORT OF ANALYSIS

Lab No.	Customer ID		Gold	Silver
A2151	#SP 3-83 10/28/83	oz/ton	<0.01	0.04
A2152	#SP 5-83 10/28/83	oz/ton	<0.01	0.03
A2153	#SPBH-1-83 B & H Mine 10/28/83	oz/ton	<0.01	0.16
A2154	#SPCS-2-83 Curie Shields 10/28/83	oz/ton	<0.01	<0.01
A2155	#SPDB-4-83 Doc Barr 10/28/83	oz/ton	<0.01	<0.01
A2156	#SPDM-6-83 Diana Mine 10/28/83	oz/ton	<0.01	<0.01



**WYOMING ANALYTICAL LABORATORIES, INC.**

Box 638 • 605 South Adams

(307) 742-7995

LARAMIE, WYOMING 82070

Dan Hausel  
Wyoming Geological Survey  
Box 3008, Univ. Sta.  
Laramie, WY 82071

Request No. 1590-063  
Date: 26 July 1983

REPORT OF ANALYSIS

Customer ID	Lab No.	Gold (oz/ton)
Caribou Mine South Pass #CBU-1-83	A0955	0.33
SW of Caribou So. Pass #CBU-2-83	A0956	<0.01