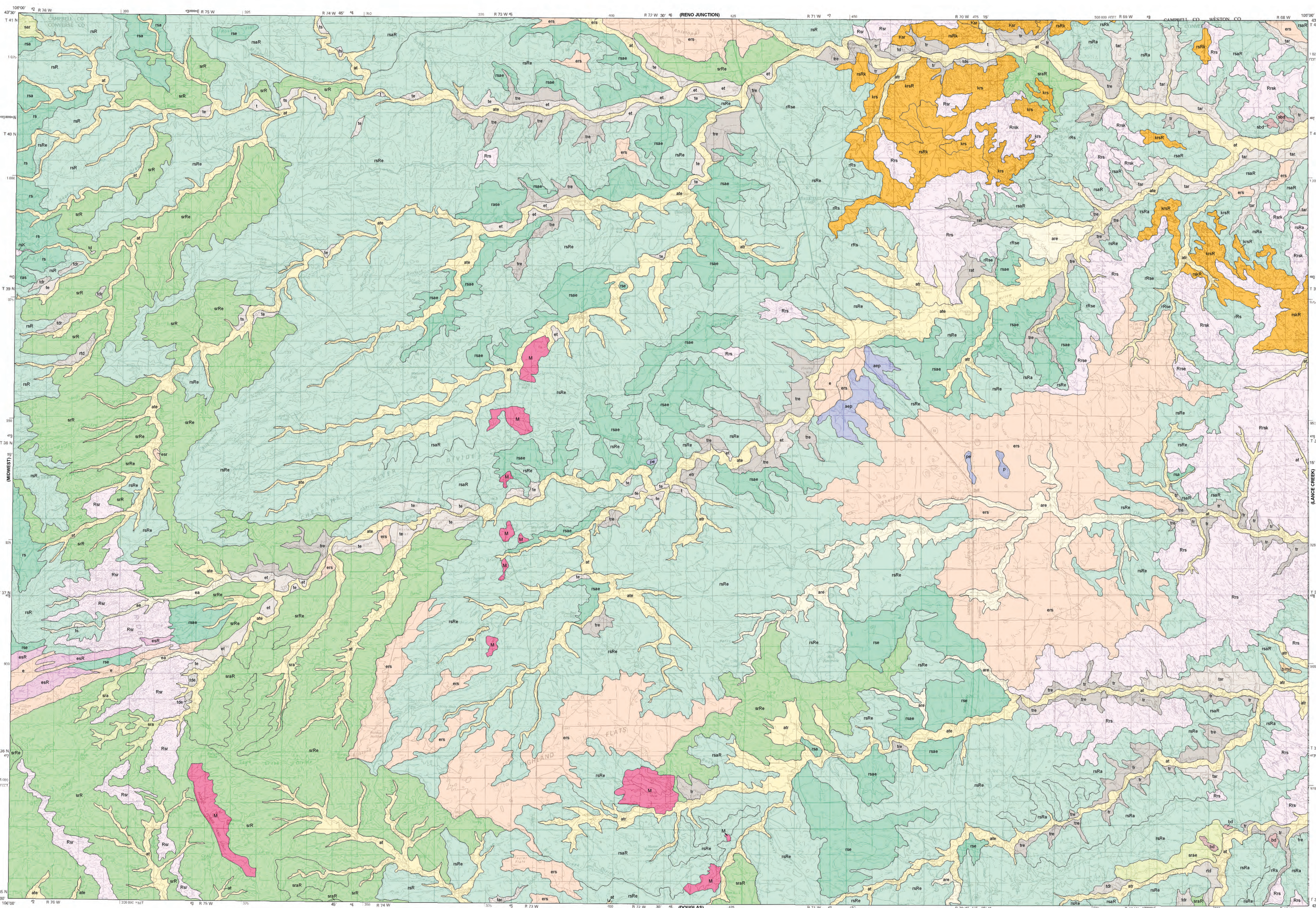


Geology - Interpreting the past to provide for the future



Prepared in cooperation with the
U.S. GEOLOGICAL SURVEY



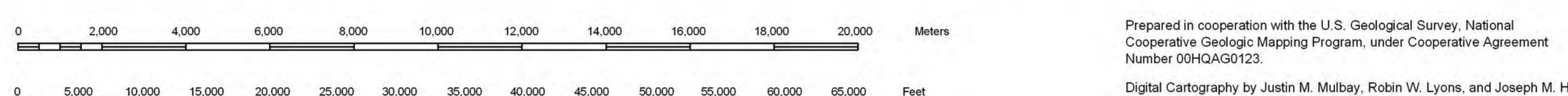
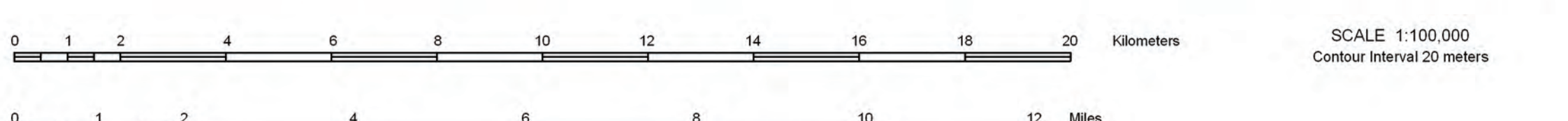
- CLASSIFICATION OF MAP UNITS**
- Alluvium Deposits**
 - Alluvium and alluvium mixed with residuum, colluvial deposits, lacustrine deposits and/or slopewash (101) (ac, arc, ca)
 - Alluvium mixed with terrace deposits, with (scattered) colluvial deposits and/or residuum (102) (at, alc, atr)
 - Bench Deposits**
 - Dissected bench deposits and dissected bench deposits mixed with slopewash, colluvial deposits, and/or residuum (402) (bd, sbd)
 - Bench Deposits or mesa caprock undifferentiated**
 - Dissected bench depositional caprock and dissected bench deposits/mesa caprock with a thin cover of colluvial deposits, slopewash, and/or residuum (502) (bvd)
 - Terrace Deposits**
 - Terrace deposits and terrace deposits mixed with alluvium, colluvial deposits, residuum, and/or slopewash (601) (et, l, te, ts)
 - Dissected terrace deposits and dissected terrace deposits mixed with slopewash, alluvium, colluvial deposits, and/or residuum (602) (rd, td, tdc, tdr, tds)
 - Shallow terrace deposits or shallow terrace deposits/structural terrace mixed with residuum and/or colluvial deposits (603) (etr, tr, ttc, rat)
 - Eolian Deposits**
 - Eolian deposits and colluvial deposits mixed with residuum, slopewash, and alluvium (701) (c, crs, csr)
 - Playa Lake and playa lake deposits**
 - Playa lake, playa lake deposits, and playa lake deposits mixed with colluvial deposits, residuum and/or alluvium (1001) (asp, p, pe)
 - Slopewash**
 - Slopewash and slopewash mixed with residuum, alluvium, colluvial deposits, alluvial fan deposits, gms and/or colluvium (1101) (sar, sta, sta)
 - Slopewash mixed with scattered bedrock outcrops and residuum, alluvial fan deposits, alluvium, gms, colluvium, clinker, and/or colluvium (1102) (sfs, sfs, sfs)
 - Residuum**
 - Residuum mixed with slopewash, alluvium, colluvial deposits, and/or alluvial fan deposits (1401) (rs, rsc, rs, rsl, rsc, rsl)
 - Residuum mixed with scattered bedrock outcrops or structural terrace/terrace deposits and slopewash, alluvium, colluvial deposits, alluvial fan deposits, and/or colluvium (1402) (rR, rRc, rRr, rRr, rRr, rRr, rRr)
 - Bedrock**
 - Bedrock and bedrock mixed with colluvium, alluvial fan deposits, colluvial deposits, slopewash, gms, clinker, and/or residuum (1501) (Rr, Rrc, Rrk, rRr, RrR, RrR)
 - Bedrock or upturned truncated bedrock with a thin mantle of colluvial deposits, residuum, and/or slopewash (1502) (eR)
 - Mined Areas**
 - Mined areas (1701) (M)
 - Clinker**
 - Clinker mixed with residuum, slopewash, and/or alluvial deposits (2001) (ks, ksr, ksr, rRr, rRr)

Map Series	Map Series	Map Series	Map Series	Map Series	Map Series
100000000	100000000	100000000	100000000	100000000	100000000
100000000	100000000	100000000	100000000	100000000	100000000
100000000	100000000	100000000	100000000	100000000	100000000
100000000	100000000	100000000	100000000	100000000	100000000
100000000	100000000	100000000	100000000	100000000	100000000

- Current map
 - Proposed maps
 - Published maps
 - Completed maps
 - Maps in progress
- INDEX TO 1:100,000 SCALE SURFICIAL GEOLOGIC MAPS OF WYOMING**
- KEY TO ABBREVIATIONS**
Wyoming State Geological Survey maps: Map Series (M), Open File Report (OFR), Preliminary Geologic Map (PGM), and unpublished STATELAP project (SMP).

DISCLAIMERS
Users of these maps are cautioned about using the data at scales different than those at which the maps were compiled—using this data at a larger scale will not provide greater accuracy, and in fact, it is a misuse of the data.
The Wyoming State Geological Survey (WSGS) and the State of Wyoming makes no representation or warranty, expressed or implied, regarding the use, accuracy, or completeness of the data presented herein, or from a map printed from these data, nor shall the act of distributive constitute any such warranty. The WSGS does not guarantee these digital data herein, or map printed from these data, to be free of errors or inaccuracies.
The WSGS and the State of Wyoming disclaims any responsibility or liability for interpretations from this digital data or map printed from these digital data, or decisions based thereon. The WSGS and the State of Wyoming retains and does not waive sovereign immunity.
The use of or reference to trademarks, trade names, or other product or company names in this product is for descriptive or informational purposes, or in pursuant to licensing agreements between the WSGS or the State of Wyoming and software or hardware developer's/vendors, and does not imply endorsement of those products by the WSGS or the State of Wyoming.

Projection: Universal Transverse Mercator (UTM), zone 13
North American Datum of 1983 (NAD 83)
10,000-meter grid ticks; UTM, zone 13
50,000-foot grid ticks; Wyoming State Plane Coordinate System, East zone



Prepared in cooperation with the U.S. Geological Survey, National Cooperative Geologic Mapping Program, under Cooperative Agreement Number 05HQAG0122.
Digital Cartography by Justin M. Mulbay, Robin W. Lyons, and Joseph M. Huss

Additional Copies of this map can be obtained from:
Wyoming State Geological Survey
P.O. Box 1347 - Laramie, WY 82073-1347
Phone: (307) 755-2295 - Fax: (307) 755-2605
Email: sales-wsgs@wyo.gov

A digital version of this map will be available on CD-ROM.

People with disabilities who require an alternative for or communication in order to use this publication should contact the Editor, Wyoming State Geological Survey, TTY Relay Operator 1 (800) 877-9975.

PRELIMINARY SURFICIAL GEOLOGIC MAP OF THE BILL 30' x 60' QUADRANGLE, CONVERSE, CAMPBELL, AND WESTON COUNTIES, WYOMING

Compiled and mapped by
Laura L. Hallberg and James C. Case

