

THE SOULES & PERKINS GOLD MINE, SOUTH PASS, WYOMING

by W. Dan Hausel, 1984

GEOLOGICAL SURVEY OF WYOMING

The Soules and Perkins Mine lies within the NE/4 Section 11, T. 29N., R100W of South Pass, Wyoming. Figure 1 locates the mine in relation to other features on the Miners Delight Quadrangle.

The mine has more than 500 feet of development on one level. Figure 2 is a plan of the Soules and Perkins drift and crosscuts, which were mapped at waist level during the 1984 field season.

Evidence of mineralization is lacking. With the exception of a nearly two-foot wide sheared quartz vein in a crosscut approximately 210 feet north of the portal, quartz veins and shears are generally lacking. There are some minor limonite stains scattered throughout the mine, and primary sulfides were only found on the mine dump.

Although the property does lack in visible sulfides, it must be stressed that no samples were assayed, and the property was not examined for micron gold.

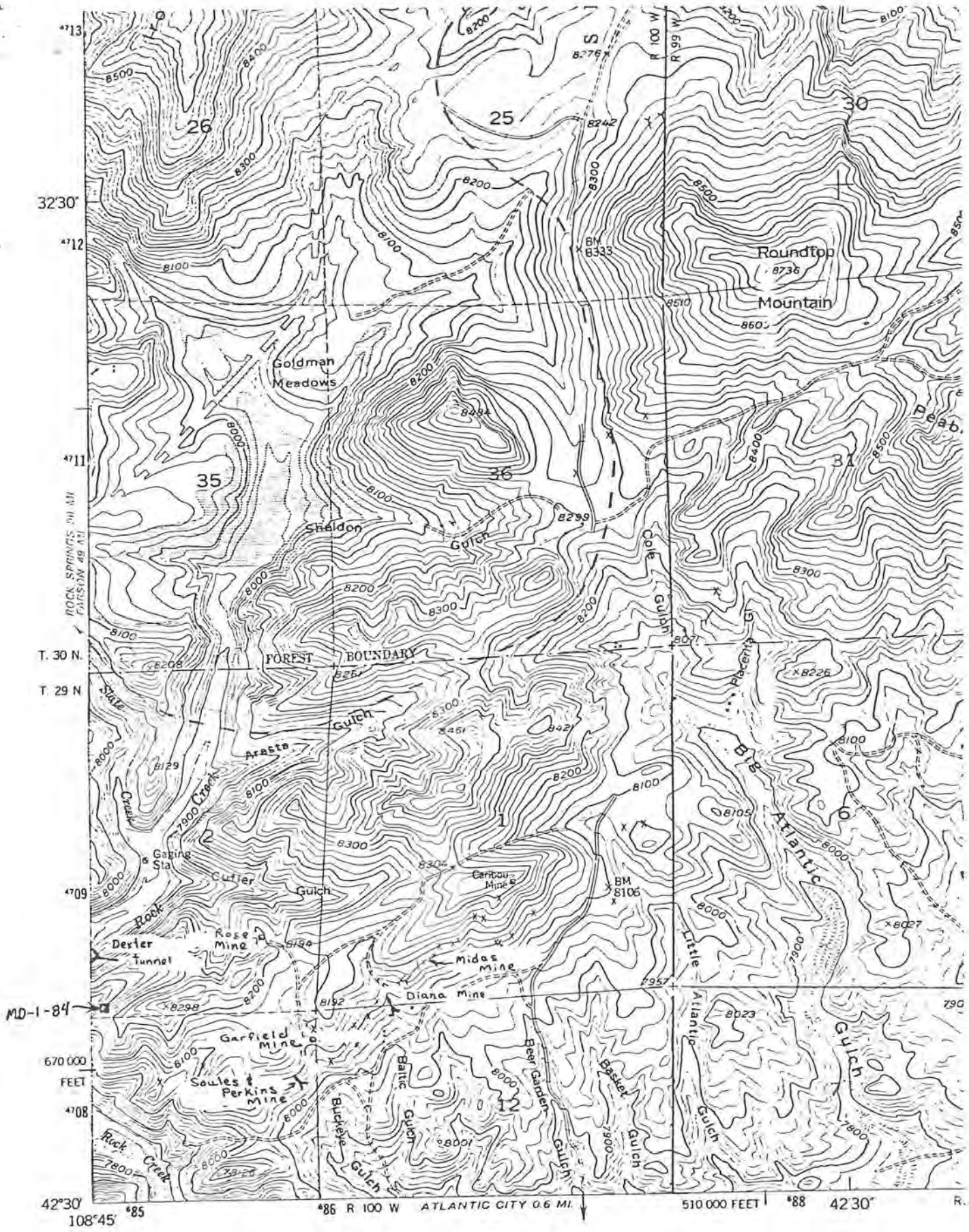


Figure 1. Location map of the Soules and Perkins Mine -- Modified from U.S. Geological Survey Miners Delight Quadrangle.

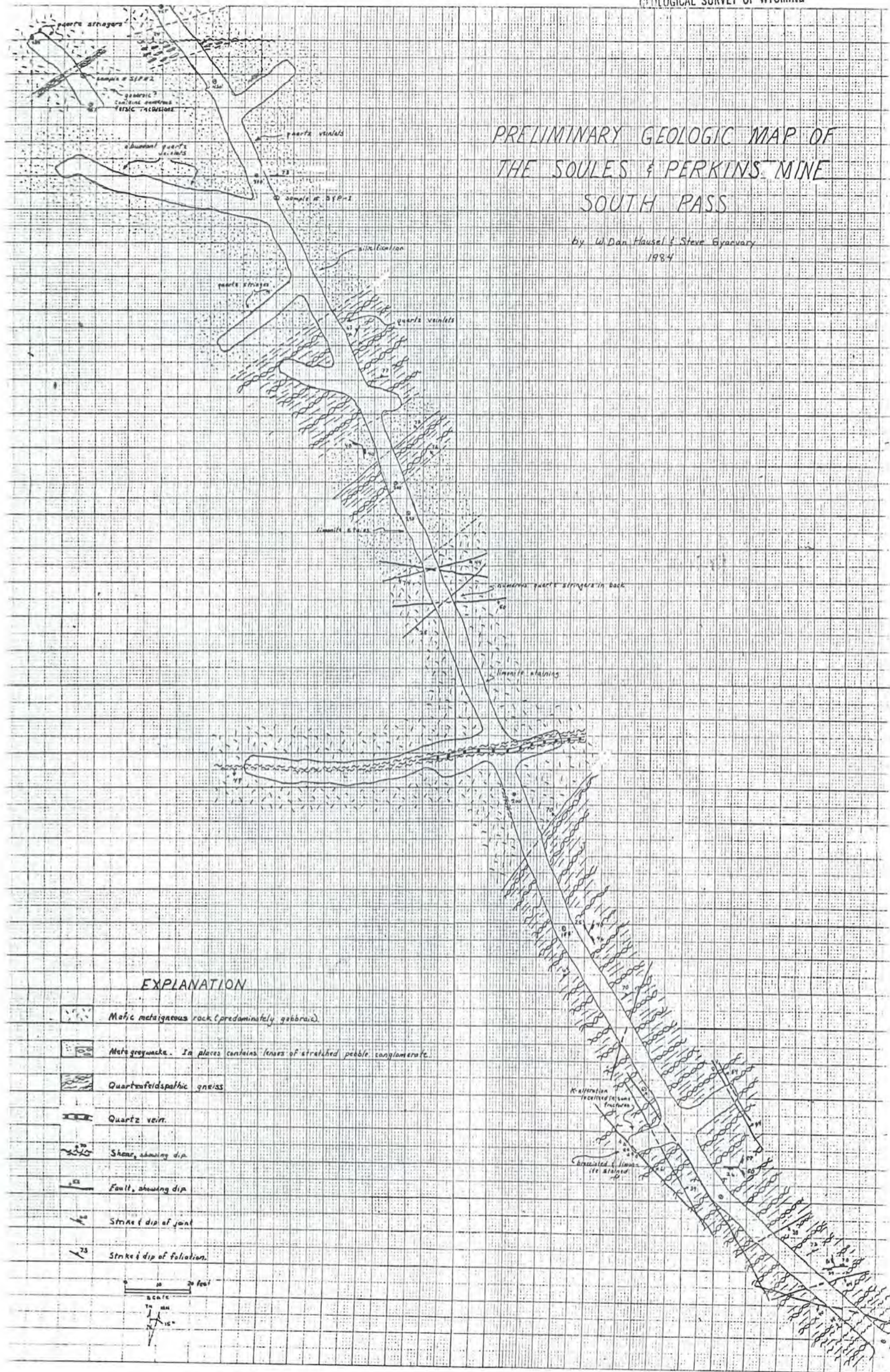


Figure 2. Preliminary geologic map of the Soules and Perkins Mine.