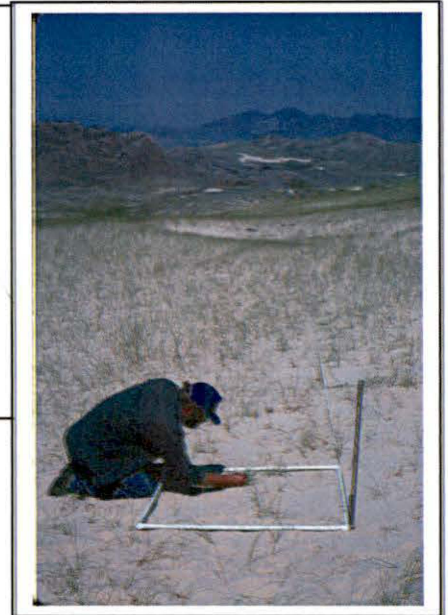
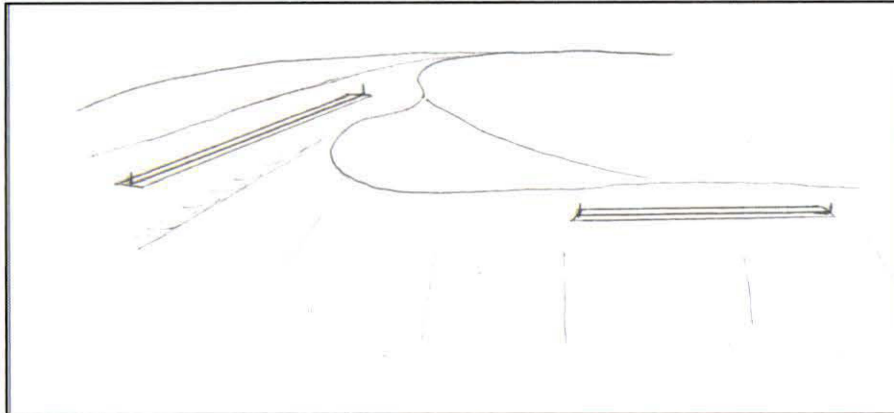


Appendix B.

Demographic plot locations and documentation for *Penstemon haydenii* (blowout penstemon)



Transect Locations:

Transect 1. Junk Hill lee slope (50 m) – left transect in diagram above

County: Carbon

Occurrence: #2 Bear Mountain - Junk Hill

Legal description:

GPS coordinates: E 0328320 4676825 W 0328361 4646851

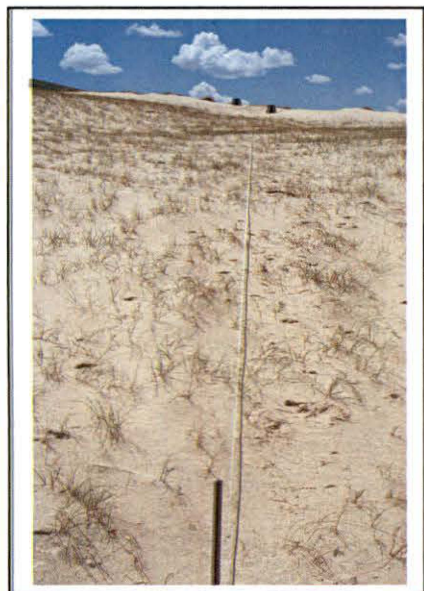
(see pair of GPS points projected onto digital orthophotos in Appendix A)

Transect bearing: 298° (13° declination)

Habitat: Lee slope of active blowout with active deposition, in a shallow trough that runs downhill away from the blowout rim (see schematic diagram). Very sparse pioneer sand vegetation limited to *Redfieldia flexuosa* (blowout grass). Sloping across transect length and sloping slightly perpendicular to transect, at the bottom of a shallow, concave trough.

Comments: Read from left (lower end) to right (upper end), facing south

Reading Junk Hill
Transect 1

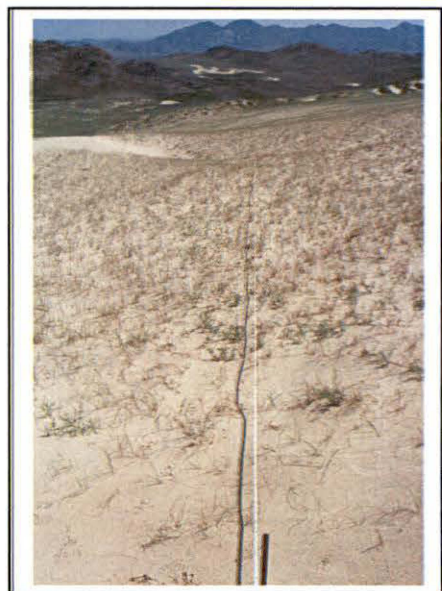


Transect 1 – lee slope

Left: From lower east end looking west (note packs on rim beyond transect)

Right: From upper west end looking east (note slight trough rising on both sides of transect)

6-23-04 B. Heidel

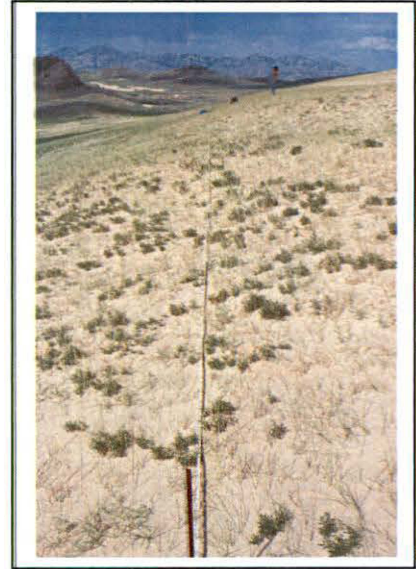




Transect 2 - rim

Left: From east end
Looking west.
(note rim at upper end)
7-22-03 B. Heidel

Right: From west end
Looking east.
6-23-04 B. Heidel



Transect 2. Junk Hill rim (50 m) – right transect in diagram on preceding page

County: Carbon

Occurrence: #2 Bear Mountain - Junk Hill

Legal description:

GPS coordinates: E 0328107 4676881 W0328150 4676904

(see pair of GPS points projected onto digital orthophotos in Appendix A)

Transect bearing: 239° (13° declination)

Habitat: Near rim of active blowout (see schematic diagram). Sparse pioneer sand vegetation of *Redfieldia flexuosa* (blowout grass) at east end and *Achnatherum hymenoides* (Indian ricegrass) and *Psoralidium lanceolatum* (scurfleaf lemonpea) at west end. The transect parallels the rim and the terrain slopes away from the rim.

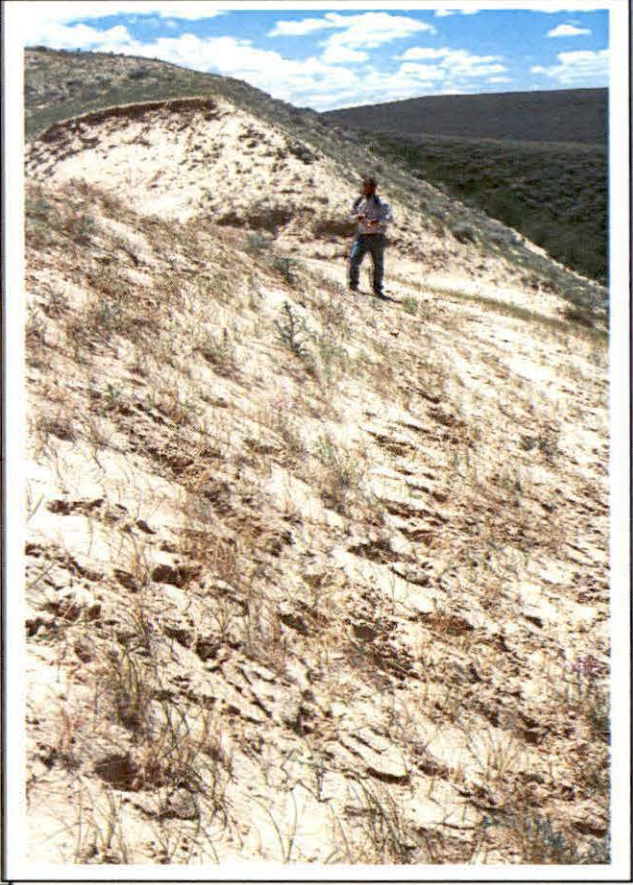
Comments: Read from left to right, facing uphill

Transect 3 - rim

Upper left: From east end looking west (note rim at upper left)

Lower left: From west end looking east (note rim at upper right)

Right: Transect area 6-22-04 B. Heidel



Transect #3. Bradley Peak rim (20 m) - (similar setting to Junk Hill rim)

County: Carbon

Occurrence: #1 Bradley Peak

Legal description:

GPS coordinates: E 0328194 4671356 W 0328177 4671347

(see pair of GPS points projected onto digital orthophotos in Appendix A)

Transect bearing: 225° ND

Habitat: Near rim of active blowout, similar to Junk Hill rim transect. Sparse pioneer sand vegetation of *Redfieldia flexuosa* (blowout grass). The transect parallels the rim and the terrain slopes away from the rim.

Comments: Read from left to right, facing uphill