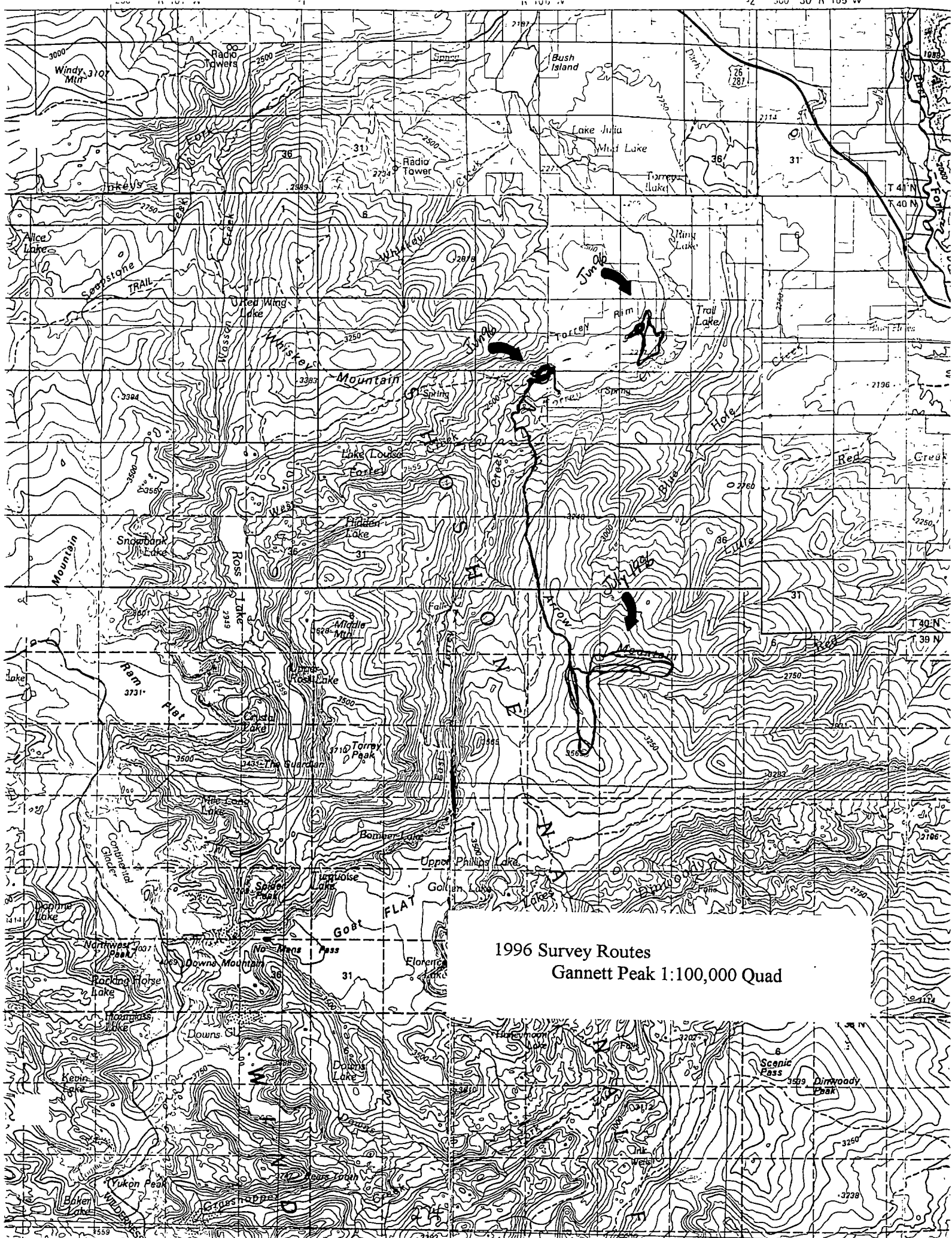


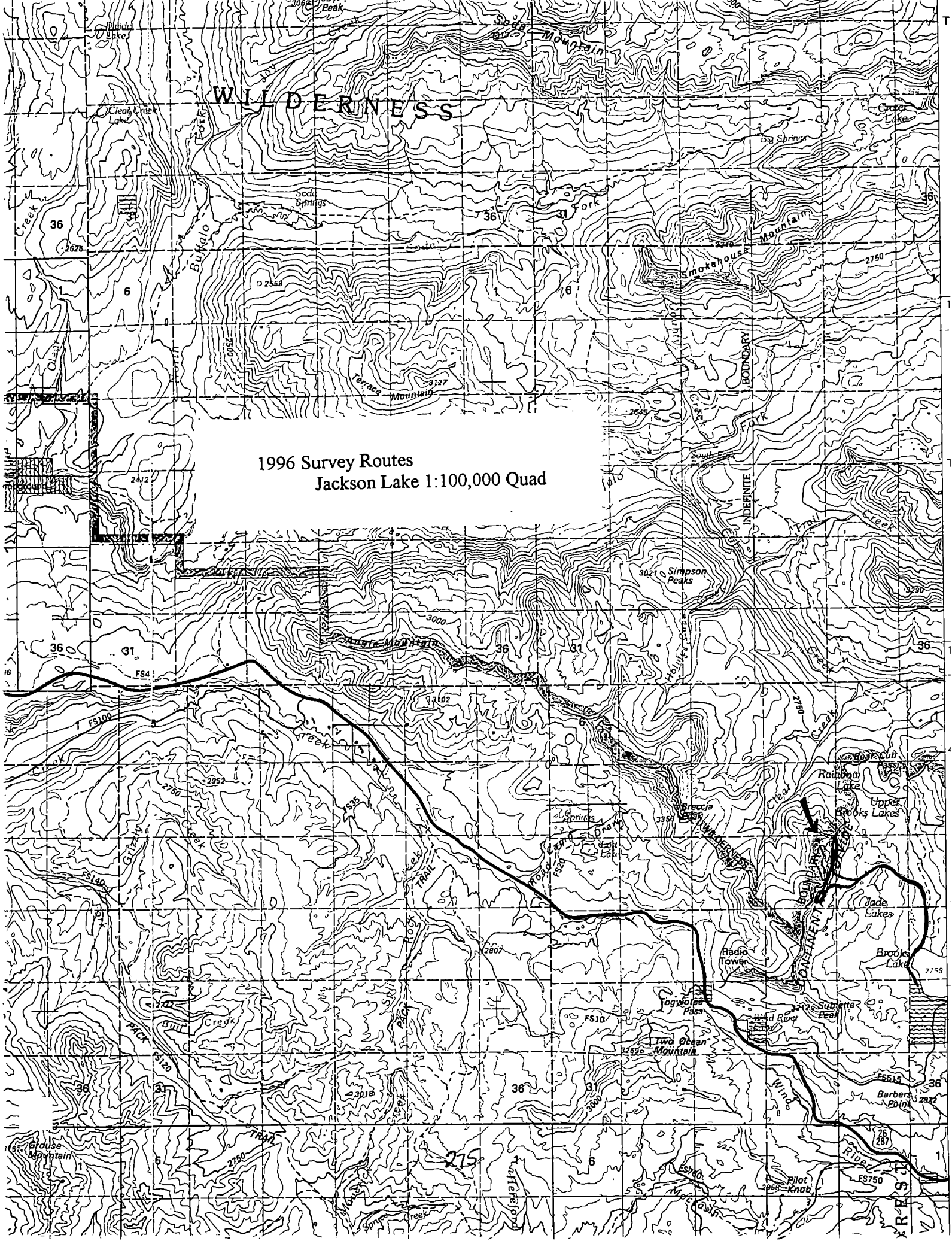
Appendix B.
1996 Survey Routes



1996 Survey Routes
Gannett Peak 1:100,000 Quad

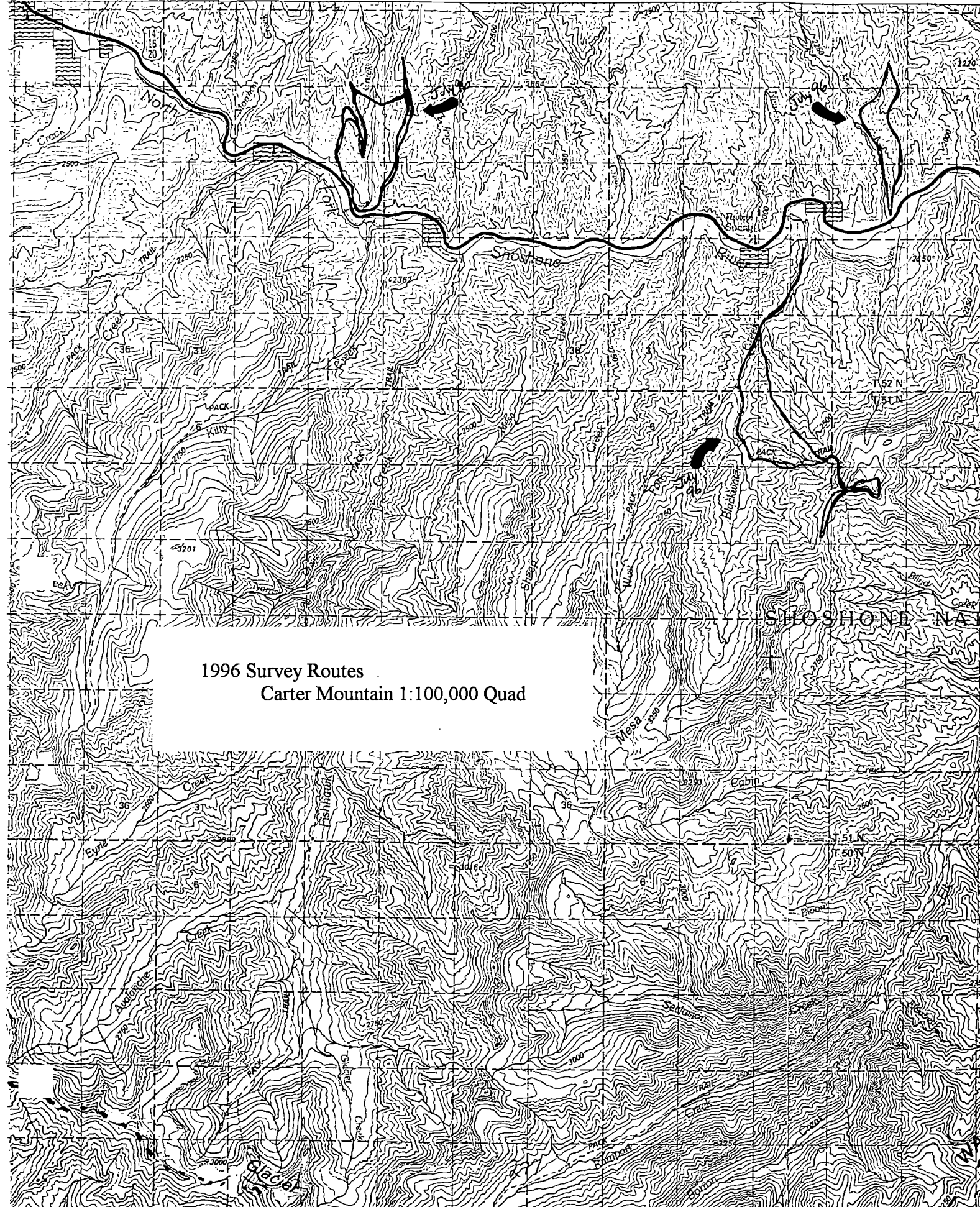
WILDERNESS

1996 Survey Routes Jackson Lake 1:100,000 Quad



MOUNTAIN, WYOMING PARK COUNTY

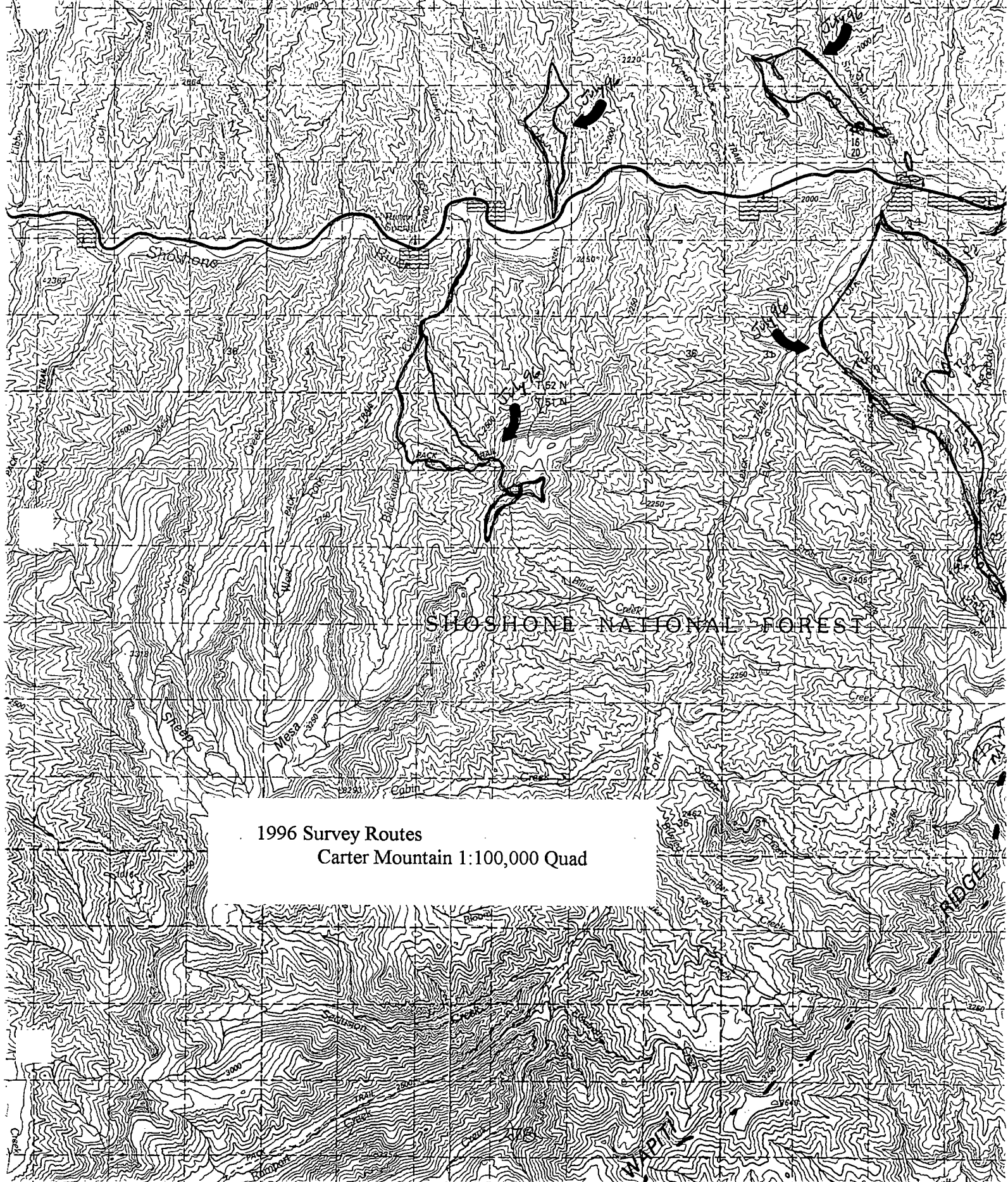
109 W 200 590000mE R 108 W 225 45' 60 R 107 W 250



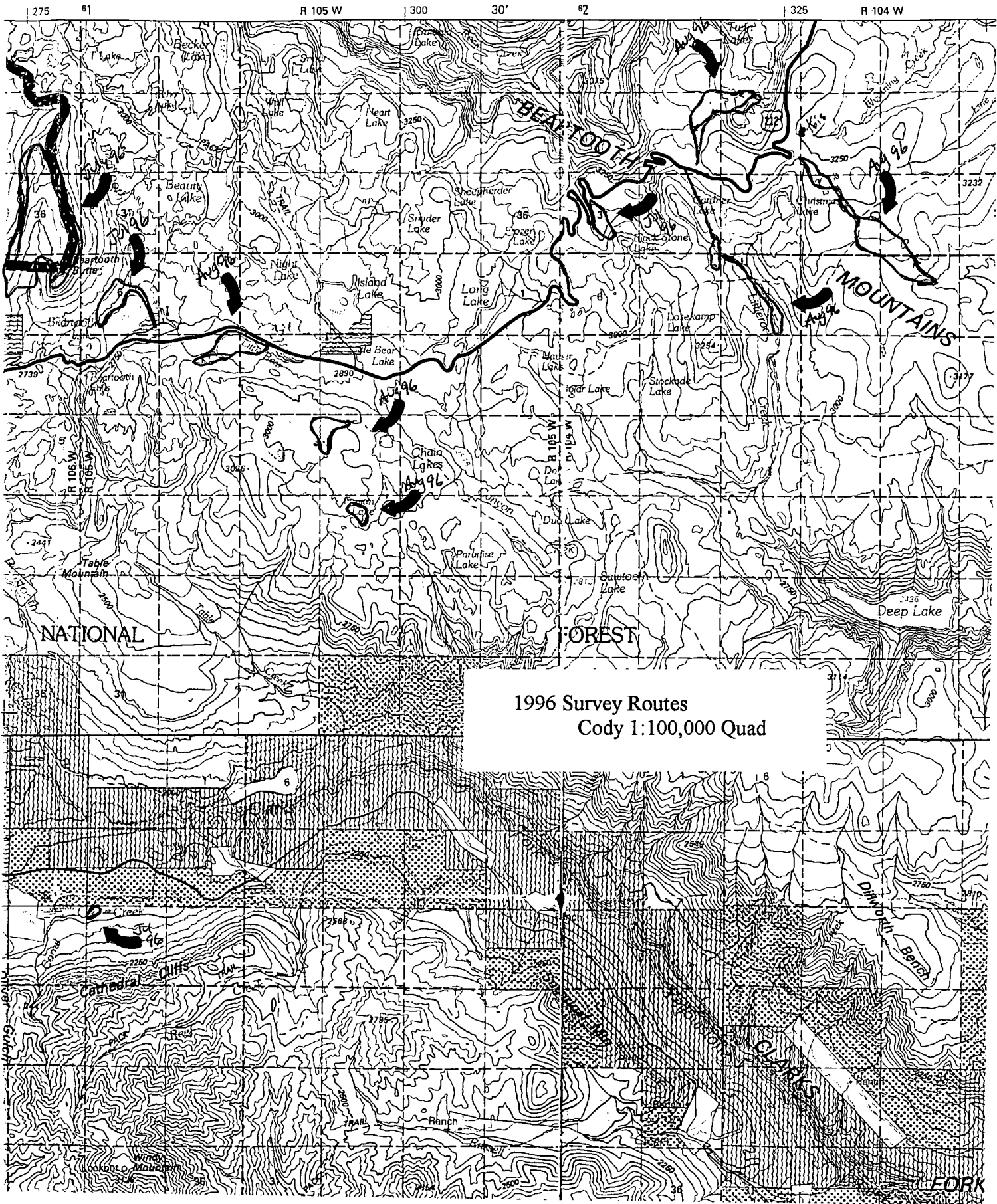
1996 Survey Routes
Carter Mountain 1:100,000 Quad

OUNTY

E R 108 W 1225 45' 60 R 107 W 250 61 : 275 R



1996 Survey Routes
Carter Mountain 1:100,000 Quad



1996 Survey Routes
Cody 1:100,000 Quad