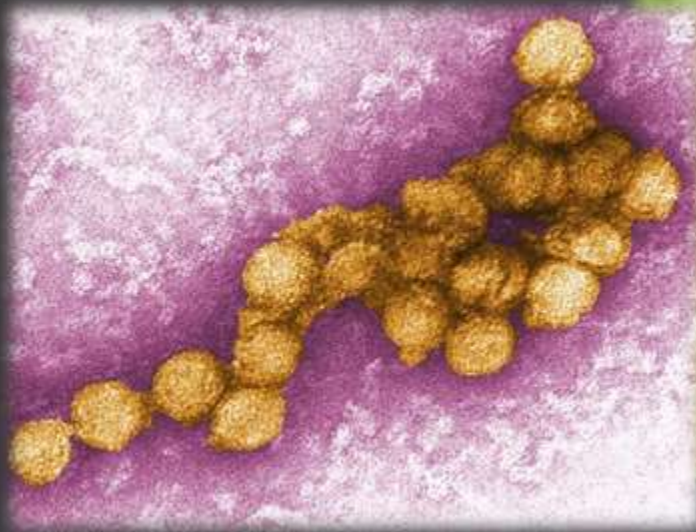
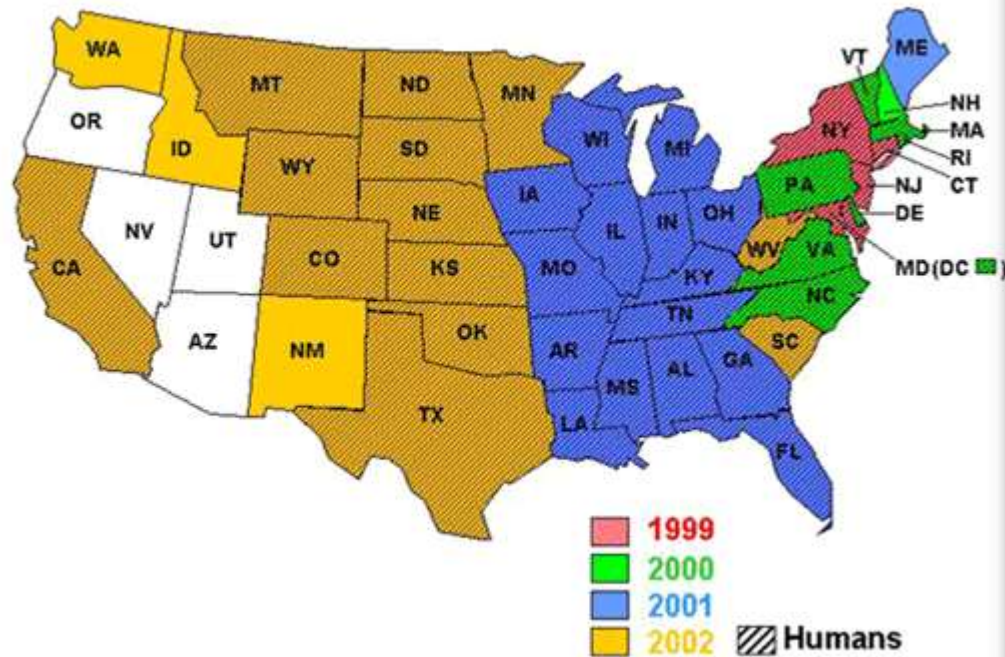


An Overview of West Nile Virus in Big Horn Basin Avian Communities



Flaviviridae flavivirus

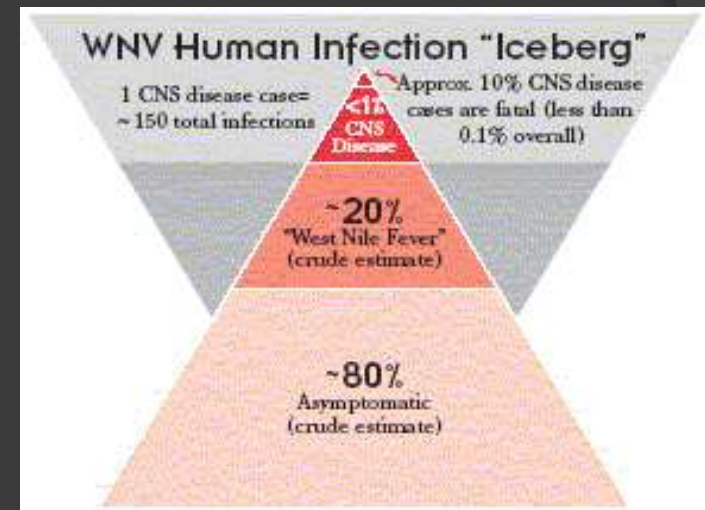
West Nile Virus in the United States, 1999 - 2002



- Introduced to US in '99
- 13,000 bird infections
- 62 human infections
- In Argentina in 2006
- 1,200 Human deaths*

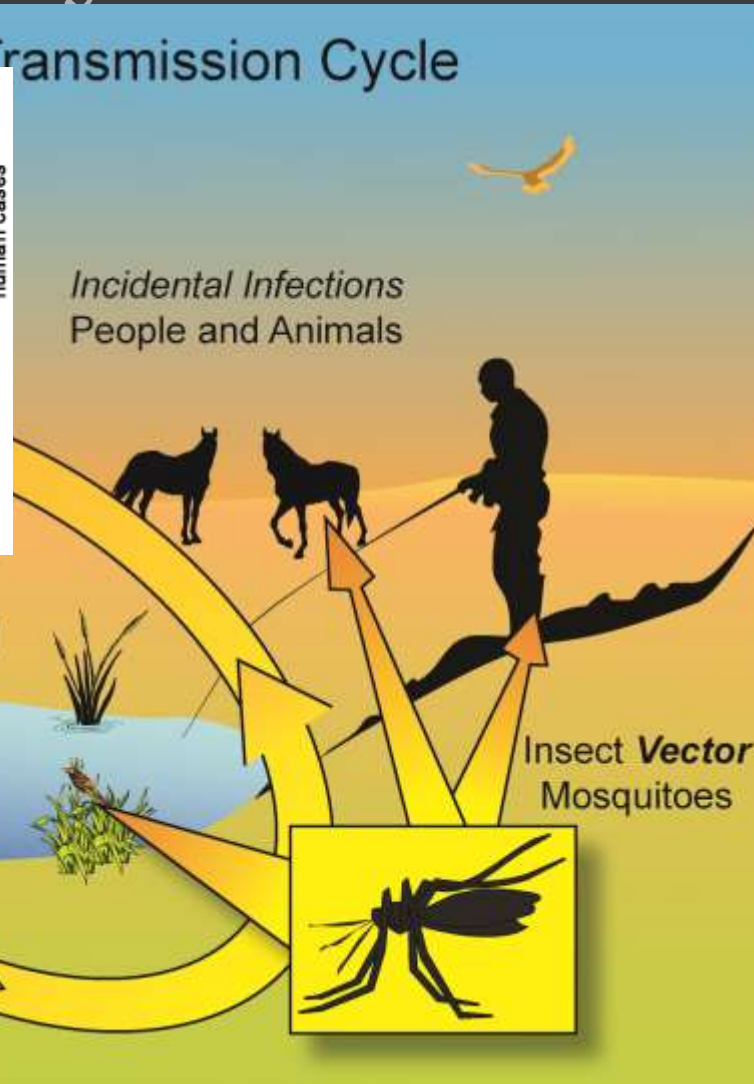
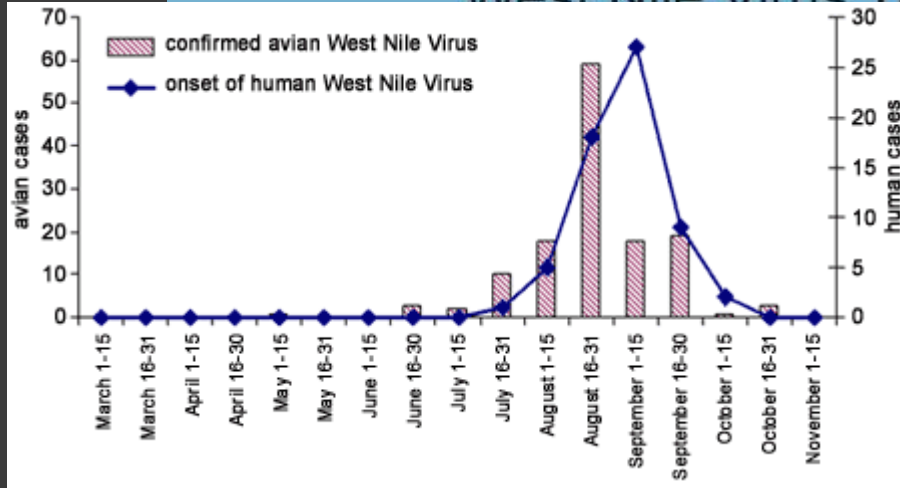
Flaviviridae flavivirus

- 80% of humans show no symptoms
- About 20% show flu-like symptoms
- <1% have major complications



Why Study Birds?

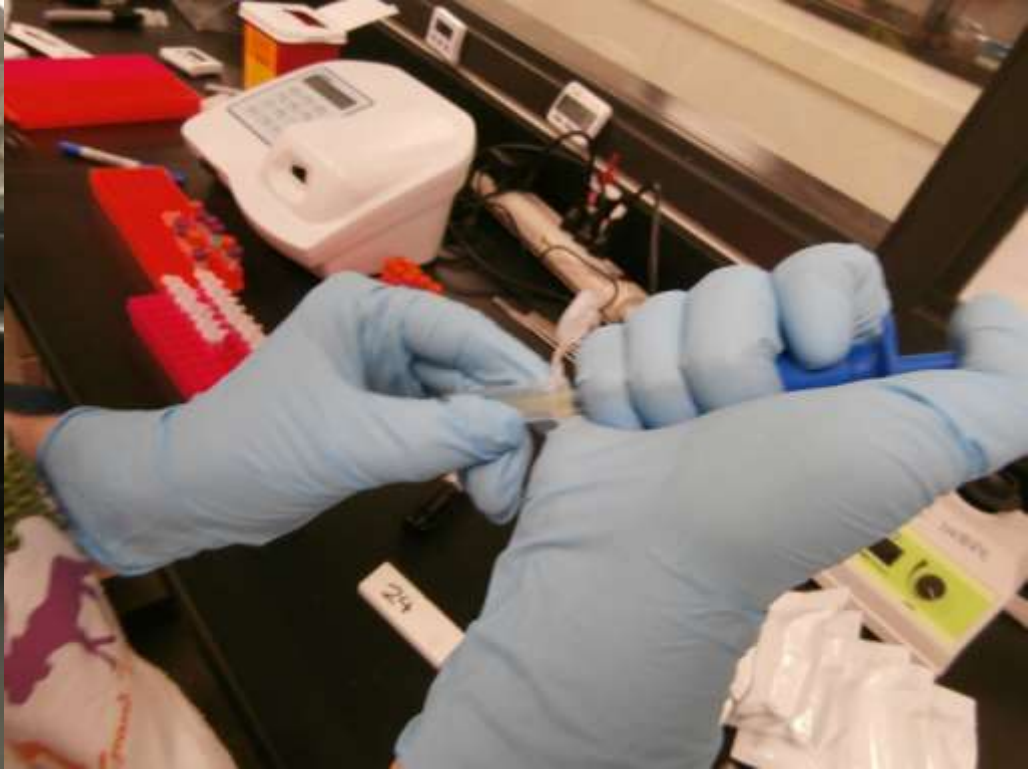
West Nile Virus Transmission Cycle



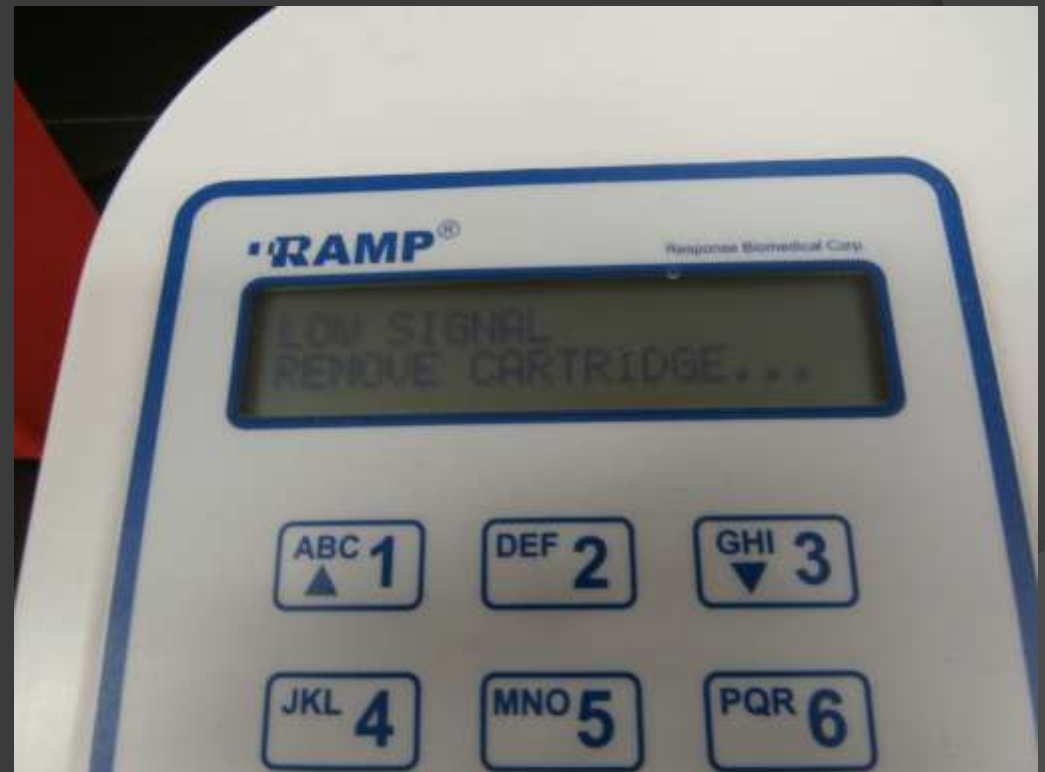
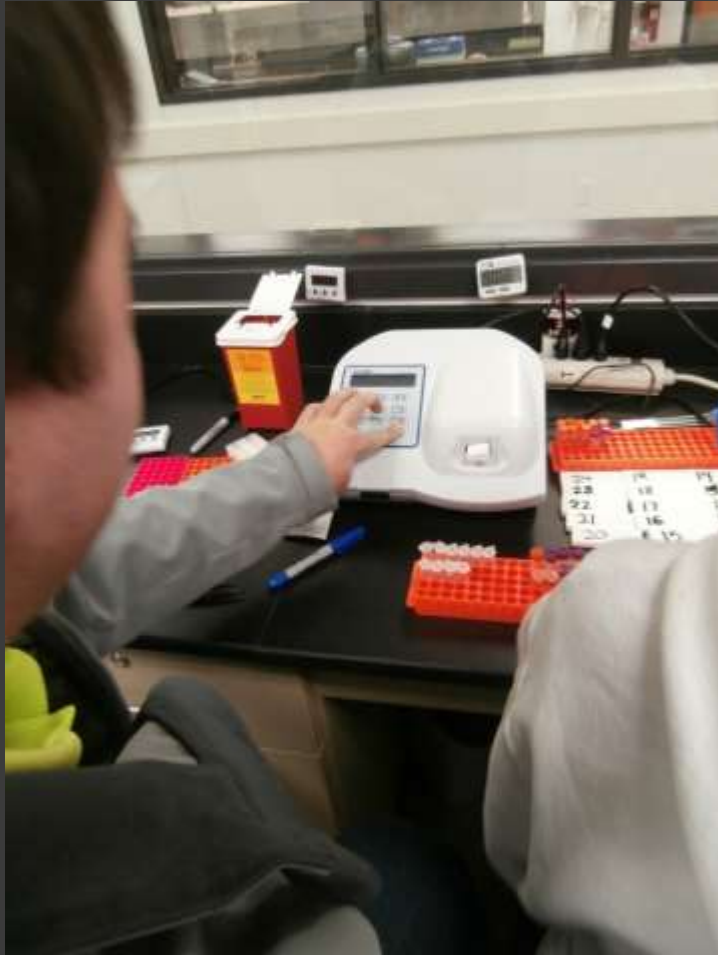
Baiting



Testing



Testing



Results

EXP. No.	Results		TITLE	DATE (MM/DD/YYYY)
			Corvid Northwestern	/ /
	Units	+ -	ID#	
1	low signal		43457 ⁵	House Sparrows
2	low signal		44058 ⁵ CAF	Fecal Testing
3	low signal		43432	
4	low signal		No band ²	
5	low signal		43434	
6	low signal		43438	
7	low signal		43451	
8	low signal		43456	
9	low signal		43433	
10	low signal		Oral ⁵	Purple capped American Gold Finch
11	low signal		568	
12	low signal		0068 ⁵ Fecal ⁵	
13	10.0	X	10067 ⁵ ORAL	
14	low signal			⁵ Paratuberc Fluid: Road Kill
15	low signal		FASO	Barna Feather Sample
16	low signal		43435 ⁵	House Sparrows
17	10.0	X	AMGO ⁵ Oral - 10058	American Gold Finch
18	low signal		10064 ⁵	American Gold Finch
19	10.0	X		American Gold Finch ORAL
20	10.0	X	10056 ⁵	AMGO ORAL
21	10.0	X	10066 ⁵	AMGO ORAL
22	low signal			House Sparrows
23	low signal		10063	AMGO ORAL
24	low signal			NSW Owl Fecal

Spectrophotometer



Dilutions / Results

Sample #	Species	Transmission	Ratio	Measurments	RAMP Reading
1	HOSP	63	.	.	.
1.1	HOSP	95.3	5	200	10
2	HOSP	0	.	.	.
2.1	HOSP	94.2	100	10	10
3	HOSP	0	.	.	.
3.1	HOSP	76.3	100	10	10
3.2	HOSP	82.3	200	5	10
4	HOSP	2.9	.	.	.
4.1	HOSP	85	50	20	12.2
6	HOSP	0	.	.	.
6.1	HOSP	40.6	5	200	10
6.2	HOSP	88.5	83.3	12	13.5
6.3	HOSP	77.7	50	20	10.7
6.4	HOSP	84.5	100	10	15.4
7	HOSP	74.3	.	.	.
7.1	HOSP	93.6	2.5	400	10
8	HOSP	38.8	.	.	.
8.1	HOSP	86.4	5	200	193.9
8.2	HOSP	92.2	10	100	10
9	HOSP	28.6	.	.	.
9.1	HOSP	93.2	10	100	10
10	AMGO	74.4/88.1	.	.	.
12	AMGO	90.7	.	.	.
13	AMGO	90.3	.	.	10
17	AMGO	98.1/85.2	.	.	10
19	AMGO	83.2	.	.	10
20	AMGO	73.3	.	.	10
21	AMGO	95.5	.	.	10
23	AMGO	107.5	.	.	.
24	NSW Owl	92.4	.	.	.

Dilutions / Results

8	HOSP	38.8
8.1	HOSP	86.4	5	200	193.9	
8.2	HOSP	92.2	10	100	10	

Dilutions / Results

Sample #	Species	Transmission	Ratio	Measurments	RAMP Reading
1	HOSP	63	.	.	.
1.1	HOSP	95.3	5	200	10
2	HOSP	0	.	.	.
2.1	HOSP	94.2	100	10	10
3	HOSP	0	.	.	.
3.1	HOSP	76.3	100	10	10
3.2	HOSP	82.3	200	5	10
4	HOSP	2.9	.	.	.
4.1	HOSP	85	50	20	12.2
6	HOSP	0	.	.	.
6.1	HOSP	40.6	5	200	10
6.2	HOSP	88.5	83.3	12	13.5
6.3	HOSP	77.7	50	20	10.7
6.4	HOSP	84.5	100	10	15.4
7	HOSP	74.3	.	.	.
7.1	HOSP	93.6	2.5	400	10
8	HOSP	38.8	.	.	.
8.1	HOSP	86.4	5	200	193.9
8.2	HOSP	92.2	10	100	10
9	HOSP	28.6	.	.	.
9.1	HOSP	93.2	10	100	10
10	AMGO	74.4/88.1	.	.	.
12	AMGO	90.7	.	.	.
13	AMGO	90.3	.	.	10
17	AMGO	98.1/85.2	.	.	10
19	AMGO	83.2	.	.	10
20	AMGO	73.3	.	.	10
21	AMGO	95.5	.	.	10
23	AMGO	107.5	.	.	.
24	NSW Owl	92.4	.	.	.

Dilutions / Results

