

THE GEOLOGICAL SURVEY OF WYOMING
Daniel N. Miller, Jr., State Geologist

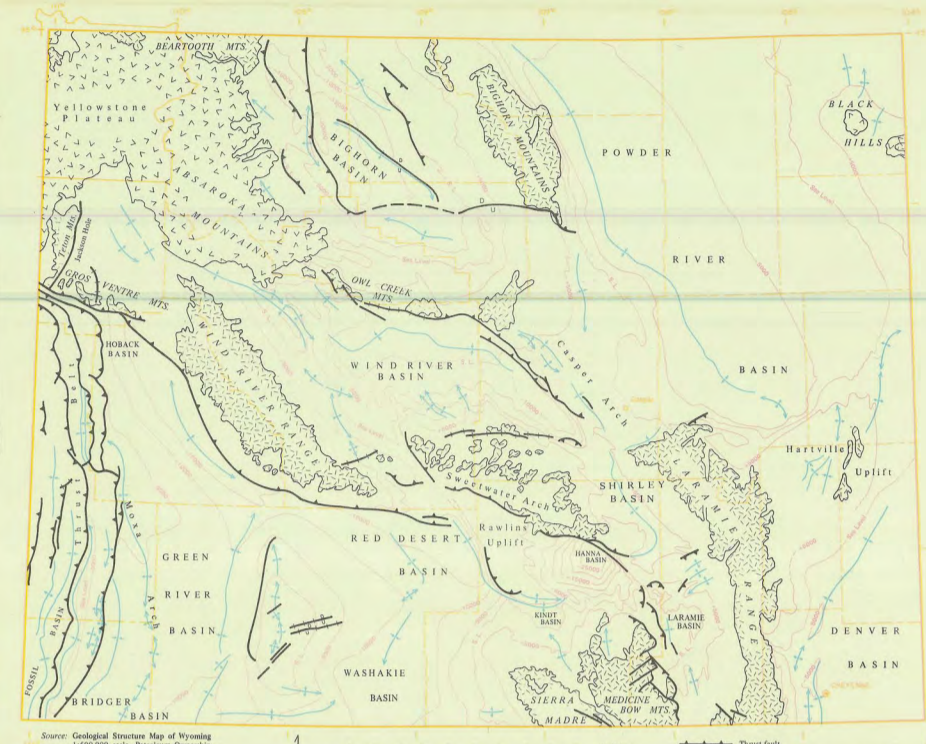


OIL AND GAS MAP OF WYOMING 1980

Compiled by Alan J. Verploeg, Rodney H. DeBruin, and David R. Lageson

SCALE 1:500,000
1 inch equals approximately 8 miles

STRUCTURAL INDEX MAP



EXPLANATION

PREDOMINANT AGE OF PRODUCTION

- TERTIARY
- UPPER CRETACEOUS
- LOWER CRETACEOUS
- JURASSIC-TRASSIC
- PERMIAN-PENNSYLVANIAN
- MISSISSIPPIAN-DEVONIAN-CAMBRIAN

REFINERY
(Showing operator and capacity in barrels per day; location approximate)

GAS PROCESSING PLANT
(Showing operator and capacity in millions of cubic feet per day; location approximate)

PIPELINES
(Showing operator, size and flow direction)

FIELDS
New fields are spotted through April, 1980.

FIELD DESIGNATIONS

FORMATION INDEX

UNDIFFERENTIATED PRECAMBRIAN ROCKS EXPOSED AT SURFACE

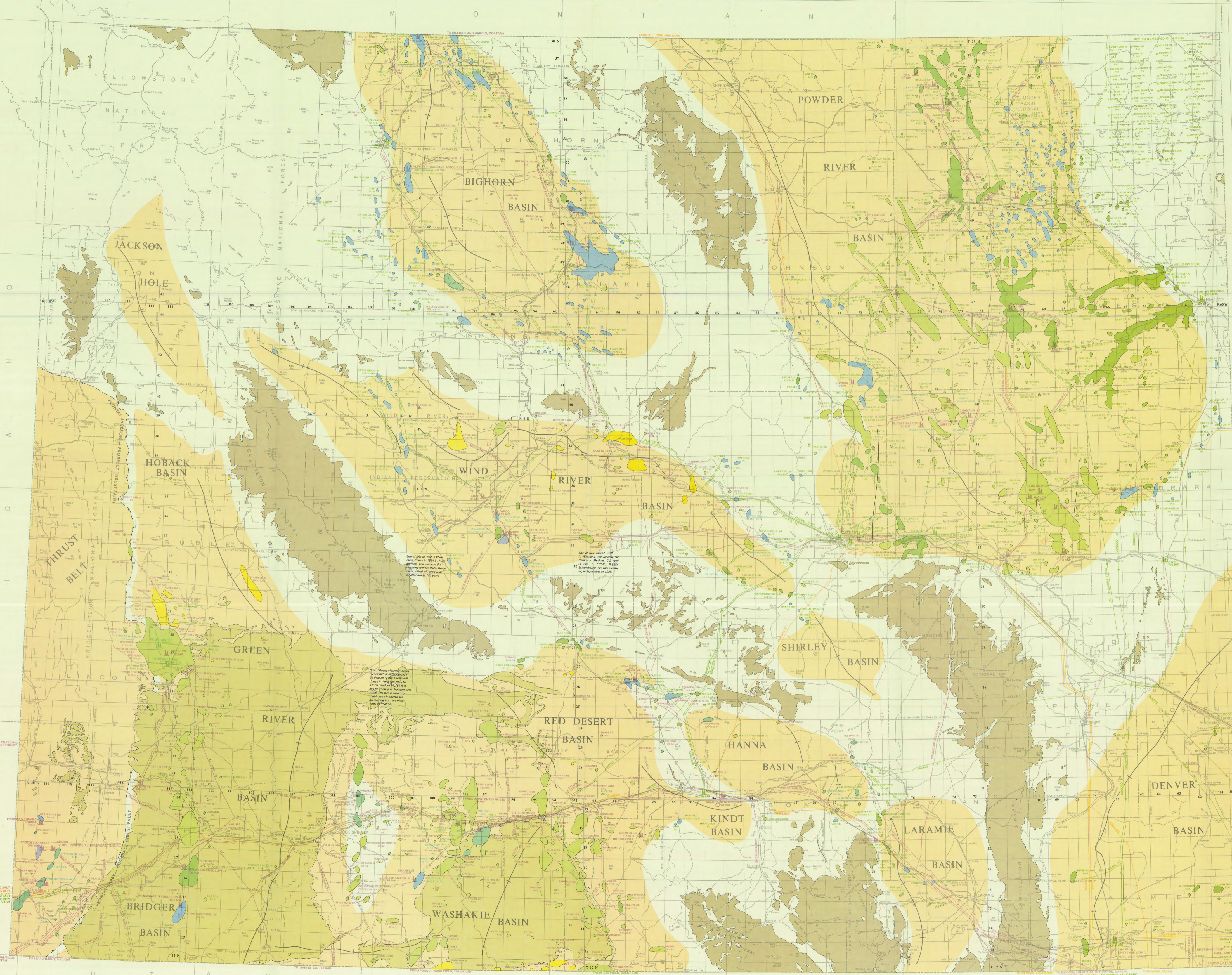
OIL SHALE - The outlined area depicts BEARING STRATA of shale occurrence only; no indication of shale reserves or quality of the reservoir and Washakie Basin (U.S.G.S. Prof. Paper 820, 1973). For further information concerning Wyoming's oil shale, contact the Laramie Energy Technology Center in Laramie, Wyoming.

MAJOR WYOMING BASINS AND THRUST BELT

APPROXIMATE LOCATION OF MAJOR BASIN AXIS

MAJOR THRUST FAULTS FORMING EASTERN BOUNDARY OF THRUST BELT

- LIST OF REFERENCES**
1. Biggs, P., and Espach, R.H., 1960, Petroleum and natural gas fields in Wyoming, U.S. Geol. Surv. Bull. 842, 238 p.
 2. Petroleum Ownership Map Company, 1978, Color geological ownership map of Wyoming, scale 1:250,000.
 3. Wyoming Geological Association, 1979, Oil and gas fields - greater Green River Basin, 428 p.
 4. U.S. Geological Survey, 1979, Oil and gas fields and pipelines of Wyoming, scale 1:500,000.
 5. Western Oil Reporter, 1980, 1980 natural gas pipeline system map, scale 1:4,000,000.
 6. Western Oil Reporter, 1980, 1980 crude oil pipeline system map, scale 1:4,000,000.
 7. Wyoming Geological Association, 1977, Wyoming oil and gas field symposium, 579 p.
 8. Wyoming Geological Association, 1979, Oil and gas fields - greater Green River Basin, 428 p.
 9. Wyoming Geological Survey, 1975, Energy resources map of Wyoming, scale 1:500,000.
 10. Wyoming Oil and Gas Conservation Commission, 1979, Wyoming oil and gas statistics, 1979-1978, 118 p.



Field: Miller and Phyllis Riser, Cartographers, The Geological Survey of Wyoming
Photo: Plots Lithographing Company, Culver City, California
Copyright 1980 The Geological Survey of Wyoming

The Wyoming Geological Survey would like to thank all the oil and gas companies for sending maps of their pipelines, the Public Service Company, Culver City, California, for their assistance, and the Petroleum Information Association of Wyoming for information on pipeline references.

Map modified from U.S. Geological Survey, 1966 Edition.