

REPORT ON ASSAYS OF ARSENOPIRYRITE-QUARTZ VEINS
ON THE SWEETWATER RIVER, SOUTH PASS
GREENSTONE BELT, WYOMING

by
W. Dan Hausel
1982

Two arsenopyrite quartz veins trending north northeast were found on the north bank of the Sweetwater River a few hundred feet east of the Dream Mine. These veins are located in section 9, T29N, R98W along the southeastern edge of the historic Lewiston gold district. Both veins contain considerable arsenopyrite. The eastern vein is approximately $\frac{1}{2}$ to one foot wide and the western vein is upwards to 3 feet wide. Sample SW82-2 was a chip sample of the eastern vein (Figure 1) and assayed 0.13 ounces per ton silver and no gold. Sample SW82-1 was chipped from the western vein and analyzed for gold (Figure 2). No gold was detectable from this sample either.

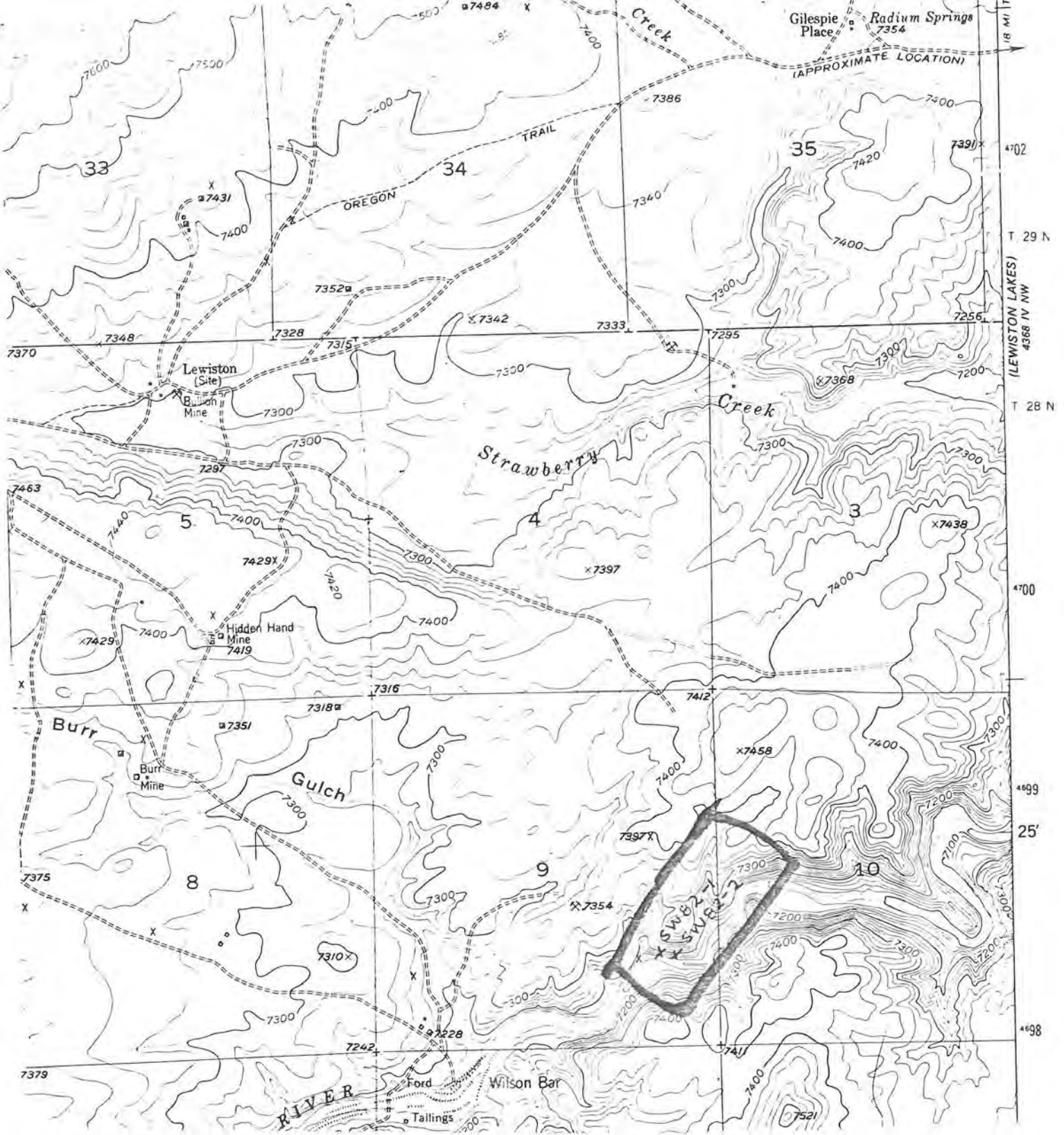


Figure 1. Location map of arsenopyrite-quartz vein samples (base map U.S. Geological Survey Radium Springs 7 1/2-minute quadrangle).



WYOMING ANALYTICAL LABORATORIES, INC.

Box 638 • 605 South Adams

(307) 742-7995

LARAMIE, WYOMING 82070

Dan Hausel
Wyoming Geological Survey
Box 3008, Univ. Sta.
Laramie, WY 82071

Request No. 1251-063
Date: 4 August 1982

REPORT OF ANALYSIS

Customer ID	Lab No.	Copper (mg/Kg)	Gold (oz/ton)	Silver (oz/ton)	Cobalt (mg/Kg)
Lost Muffler LMP 82-1	9156	--	0.22	--	--
Lost Muffler LMP 82-2	9157	--	0.13	--	--
LMP-82-3	9158	--	0.03	0.03	103 (0.01%)
LMP-82-4	9159	--	0.04	--	--
Granite Mtns. RB-82-1	9160	9190 (0.92%)	0.02	--	--
Granite Mtns. RB-82-2	9161	--	0.05	--	--
Granite Mtns. TC-82-1	9162	--	<0.01	<0.01	--
Sweet Water River SW-82-1 (Qtz-arsenopyrite vein)	9163	--	0.01	--	--
Sweet Water River SW-82-2 (Quartz-arsenopyrite vein)	9164	--	<0.01	0.13	--


Gene F. Hayes
Laboratory Director

Figure 2. Assay report on arsenopyrite quartz vein samples SW82-1 and SW82-2.