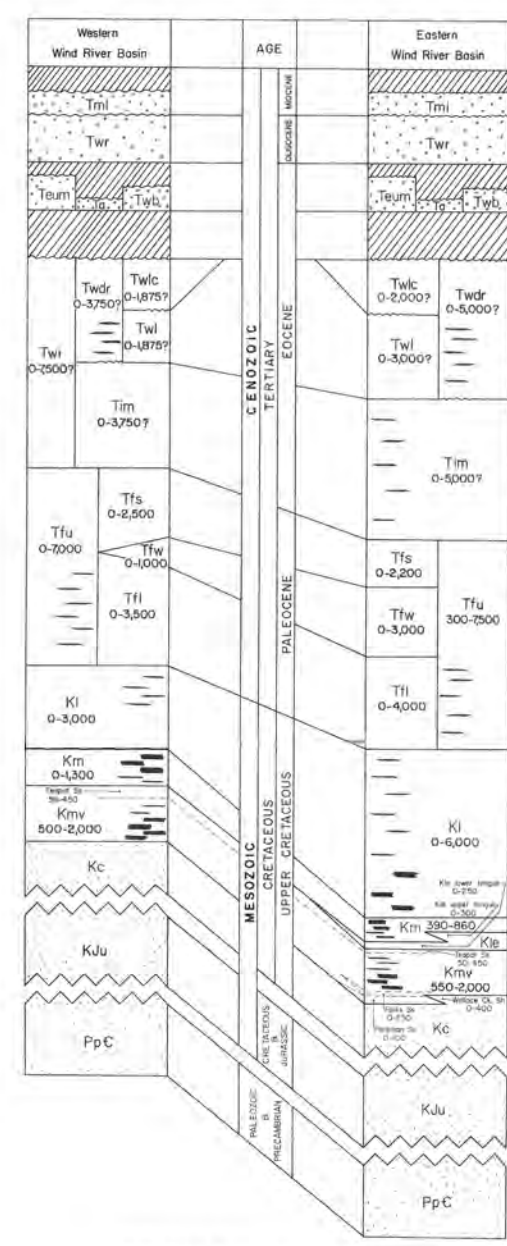
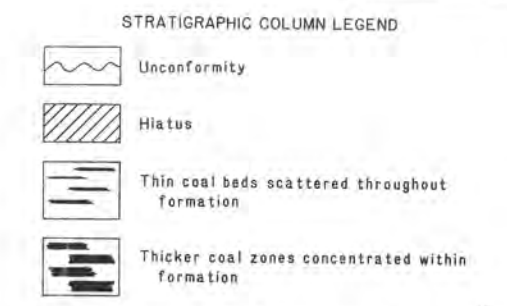


STRATIGRAPHIC COLUMN



Vertical scale for coal-bearing formations in Stratigraphic Column



Note: Only coal-bearing formations are vertically scaled. Range of thickness of formations shown in feet. Noncoal-bearing formations are shown schematically (not to scale).

KEY TO UNITS SHOWN ON GEOLOGIC MAP AND STRATIGRAPHIC COLUMN. Table listing units and their symbols: Twdr (Wind River Formation), Twlc (Lost Cabin Member), Twl (Lysite Member), Tim (Indian Meadows Formation), Tfu (Fort Union Formation), Tfs (Shotgun Member), Twf (Waltman Shale Member), Tf1 (Lower Fort Union Member), Kf (Lance Formation), Km (Meeteetse Formation), Kie (Lewis Shale), Kim (Lance Formation / Meeteetse Formation / Lewis Shale), Kml (Meeteetse Formation / Lewis Shale), Kmv (Mesaverde Formation), Kc (Cody Shale), Kju (Cretaceous / Jurassic rocks), PpC (Paleozoic and Precambrian rocks).

MAP LEGEND. Symbols for: Wind River Coal Basin boundary, Formation boundary, Fault, Thrust fault, Underground coal mine (accurately/questionably located), Surface coal mines (proposed), Coal prospect, Approximate extent of underground mine workings.

EXTENT OF COAL-BEARING ROCKS AND LOCATIONS OF COAL MINES IN THE WIND RIVER COAL BASIN, WYOMING. Compiled by Kathleen M. Groff and Richard W. Jones

REFERENCES TO GEOLOGIC MAP: Kester, W. R., 1970, Structural geology of the Wind River Basin, Wyoming; Lovv, J. D., Christensen, A. C., Sells, J. L., and Jones, R. W., 1975, Preliminary geologic map of the Arapaho 7x2' Quadrangle, central Wyoming; Brown, T. M., and Eavis, J. L., 1979, Preliminary geologic map of the Thermopila 7x2' Quadrangle, central Wyoming; Jones, R. W., 1979, Preliminary geologic map of the Leader 7x2' Quadrangle, central Wyoming; Jones, R. W., 1981, Geologic map of Wyoming; Gill, J. R., Merewether, E. A., and Cobban, W. A., 1970, Stratigraphy and nomenclature of some Upper Cretaceous and lower Tertiary rocks in south-central Wyoming; Kester, W. R., 1965, Stratigraphy and geologic history of the uppermost Cretaceous, Paleocene, and lower Eocene rocks in the Wind River Basin, Wyoming; Frontier, Cody and Mesaverde Formations in the Wind River and southern Big Horn Basins, Wyoming; Troyer, M. L., 1964, Geology of the Shotgun Butte area, Fremont County, Wyoming; Van Lier, J. A., 1966, Paleocene formations in the Wind River Basin, Wyoming; Lovv, J. D., Christensen, A. C., 1969, Preliminary correlation of stratigraphic units used on 7x2' geologic quadrangles of Wyoming; Rich, E. L., 1962, Reconnaissance geology of Hilland-Clarkson Hill area, Natrona County, Wyoming; Thompson, R. M., and White, V. L., 1952, The coal deposits of the Alkali Butte, the Big Bend Draw and the Deaver Creek fields, Fremont County, Wyoming.