

## Appendix A.

### Maps and Descriptions of Revised Census Subdivisions (1989-1998)

Crow Creek: The 32 survey subdivisions established by Marriott (1989 b) were combined into 6 subdivisions in 1998 to facilitate census efforts (most of the old marker posts established by Marriott have either been removed or obliterated from ready view due to growth in vegetation). These new subdivisions are marked by permanent roads or are islands. They include:

I. NW North (former subdivisions 1, 3, 6, 9, 12, 13, 16, 17). Area extends from the boundary of the Base (along the Roundtop Road) downstream on the north and east bank of Crow Creek south to the FamCamp Road.

II. NW South (former subdivisions 2, 5, 8, 11, 15, 19). Area extends from the boundary of the Base (along the Roundtop Road) downstream on the south and west bank of Crow Creek south to the Pavilion and sharp bend in the FamCamp Road.

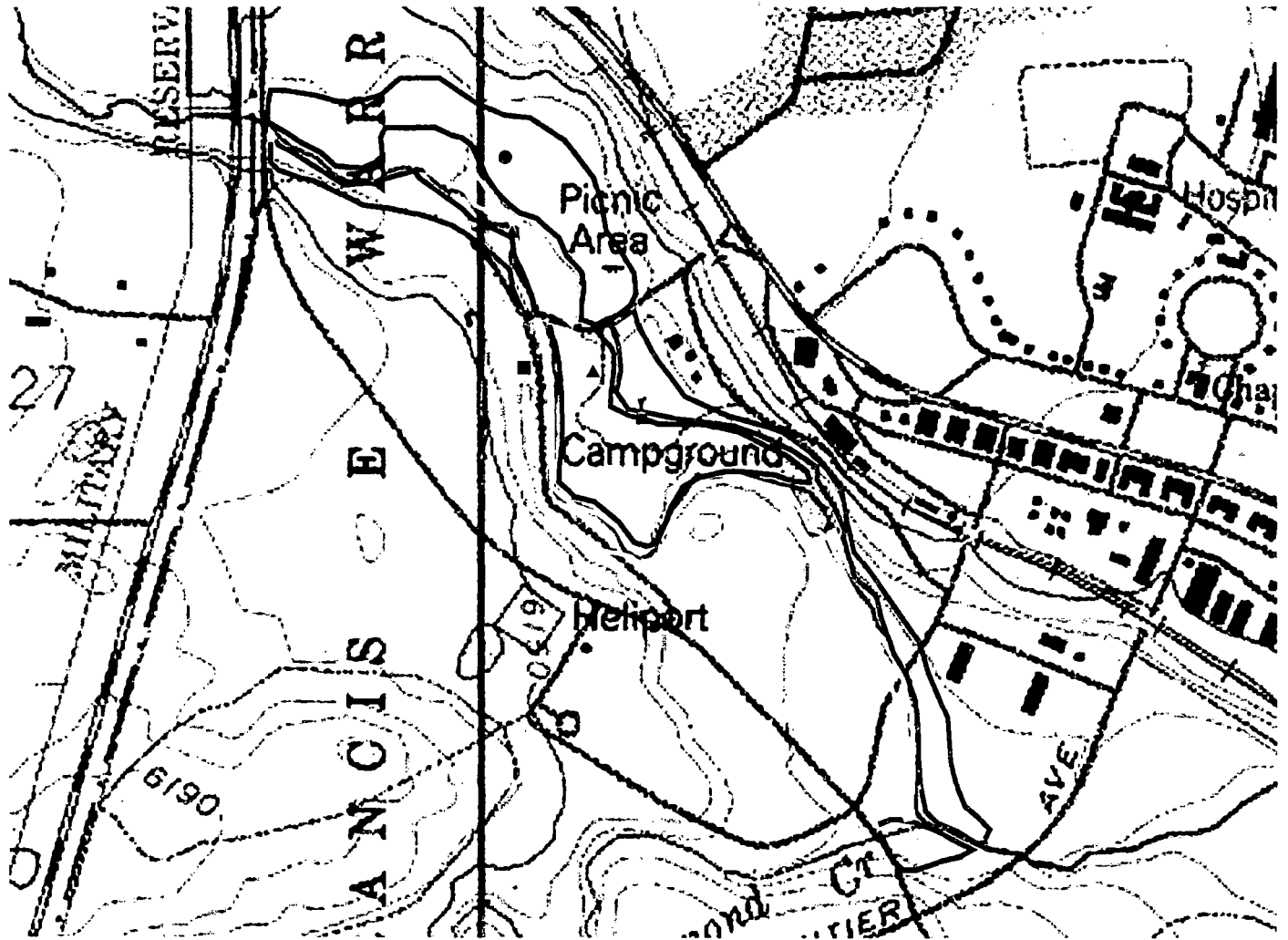
III. NW Island (former subdivisions 4, 7, 10, 14, 18). Includes all of the "island" between the two branches of Crow Creek and the north side of the FamCamp Road (including the picnic area east of the Pavilion).

IV. Camp Island (former subdivisions 23, 25). Area extends from south of the FamCamp Road through the "Nature Area" along the west side of the FamCamp to the north end of the Crow Creek Reservoir.

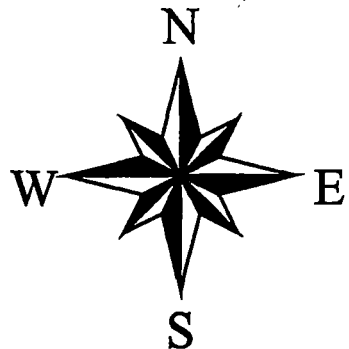
V. SE East (former subdivisions 20, 26, 27, 29, 31). Area along the east bank of Crow Creek from the FamCamp along the dirt road paralleling Crow Creek to its confluence with Diamond Creek.

VI. SE West (former subdivisions 21, 22, 24, 28, 30, 32). Area along the west bank of Crow Creek, from just south of the Pavilion (along both sides of the FamCamp Road) south along the creek to the confluence with Diamond Creek.

# Survey Subdivisions and Location of Demographic Monitoring Plots for Colorado Butterfly Plant on Crow Creek FE Warren Air Force Base



- ▲ Demographic Monitoring Plot C-1
- Demographic Monitoring Plot C-2
- Demographic Monitoring Plot C-3
- ▼ Demographic Monitoring Plot C-4
- ⚡ Crow Creek NW South
- ⚡ Crow Creek NW North
- ⚡ Crow Creek NW Island
- ⚡ Crow Creek Camp Island
- ⚡ Crow Creek SE East
- ⚡ Crow Creek SE West
- ⚡ Diamond Creek 5



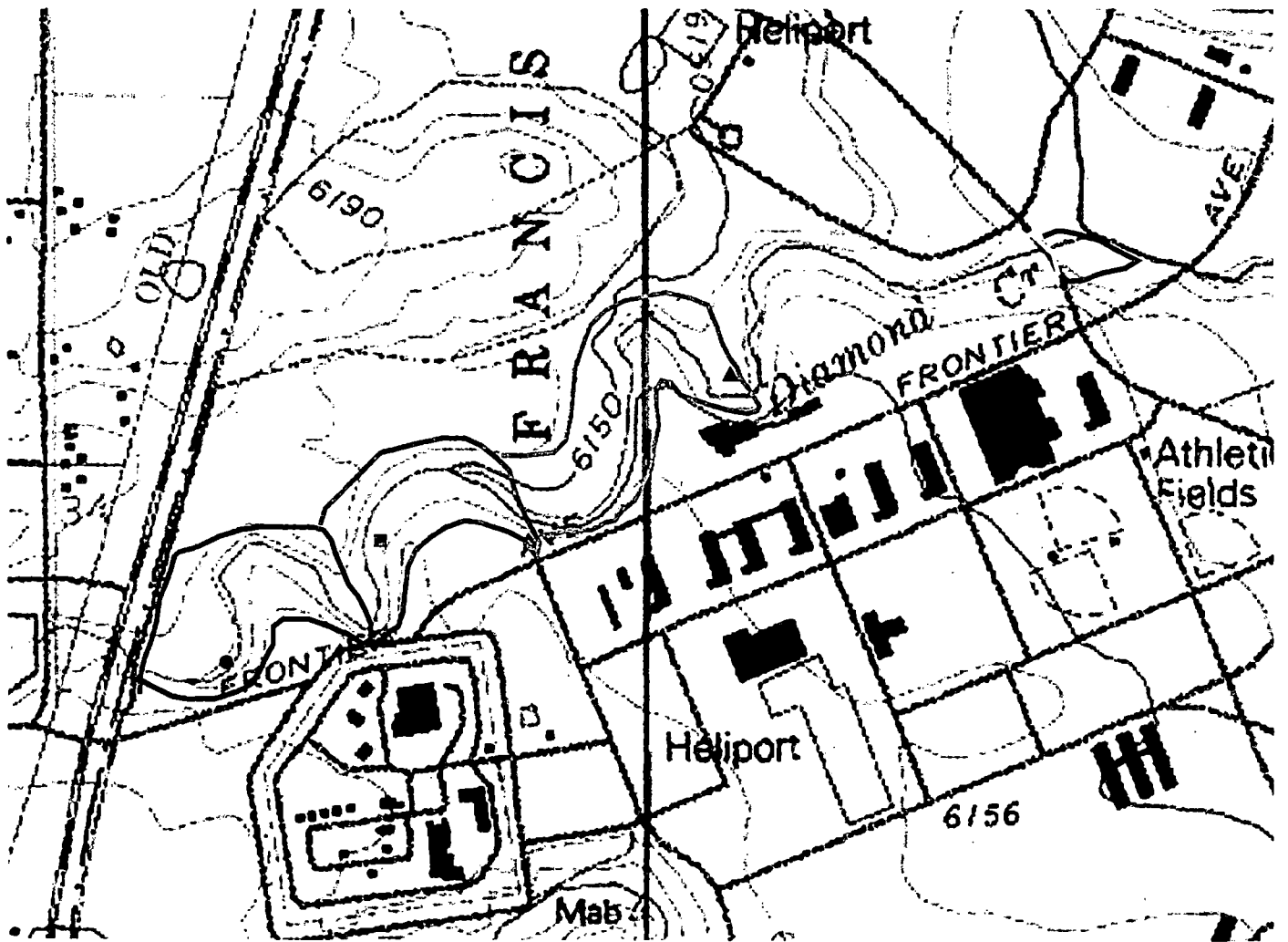
### Diamond Creek

1. From the western Base boundary downstream to the midpoint of the north side of the second meander.
2. Midpoint on north side of the second meander east to a line formed by the extension of South Dakota Avenue.
3. South Dakota Avenue line east to drainage outlet on bluff south of creek and below office buildings (boundary line bisects the north side of the meander).
4. Drainage outlet east to paved road.
5. Area along Diamond Creek between the paved road and confluence with Crow Creek.

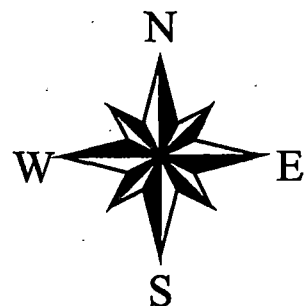
### Unnamed Drainage

1. Base boundary northeast to Cheyenne Road.
2. Cheyenne Road east to Douglas Street.

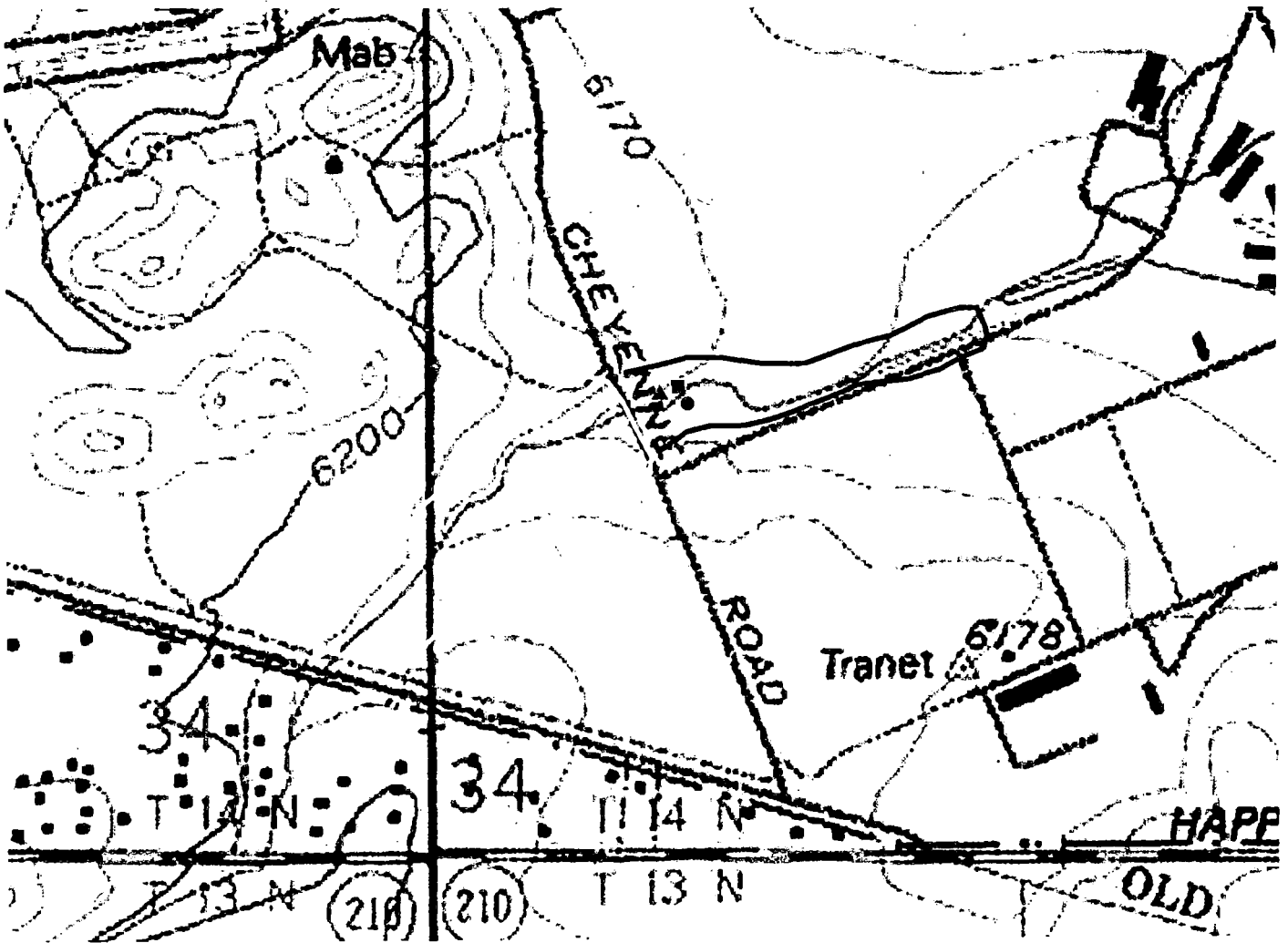
# Survey Subdivisions and Location of Demographic Monitoring Plots for Colorado Butterfly Plant on Diamond Creek FE Warren Air Force Base



- Demographic Monitoring Plot D-2
- Demographic Monitoring Plot D-1
- ▲ Demographic Monitoring Plot D-3
- ⋯ Diamond Creek 1
- - - Diamond Creek 2
- Diamond Creek 3
- - - Diamond Creek 4
- - - Diamond Creek 5



# Survey Subdivisions and Location of Demographic Monitoring Plots for Colorado Butterfly Plant on the "Unnamed Drainage" FE Warren Air Force Base



- Demographic Plot U-1
- Demographic Monitoring Plot U-3
- ▲ Demographic Monitoring Plot U-4
- Unnamed Drainage 1
- Unnamed Drainage 2

