

1^a Wheel

Directions:

Rotate the Wheel of Microbes to identify the microbes of Norris Geyser Basin!

TEMP!

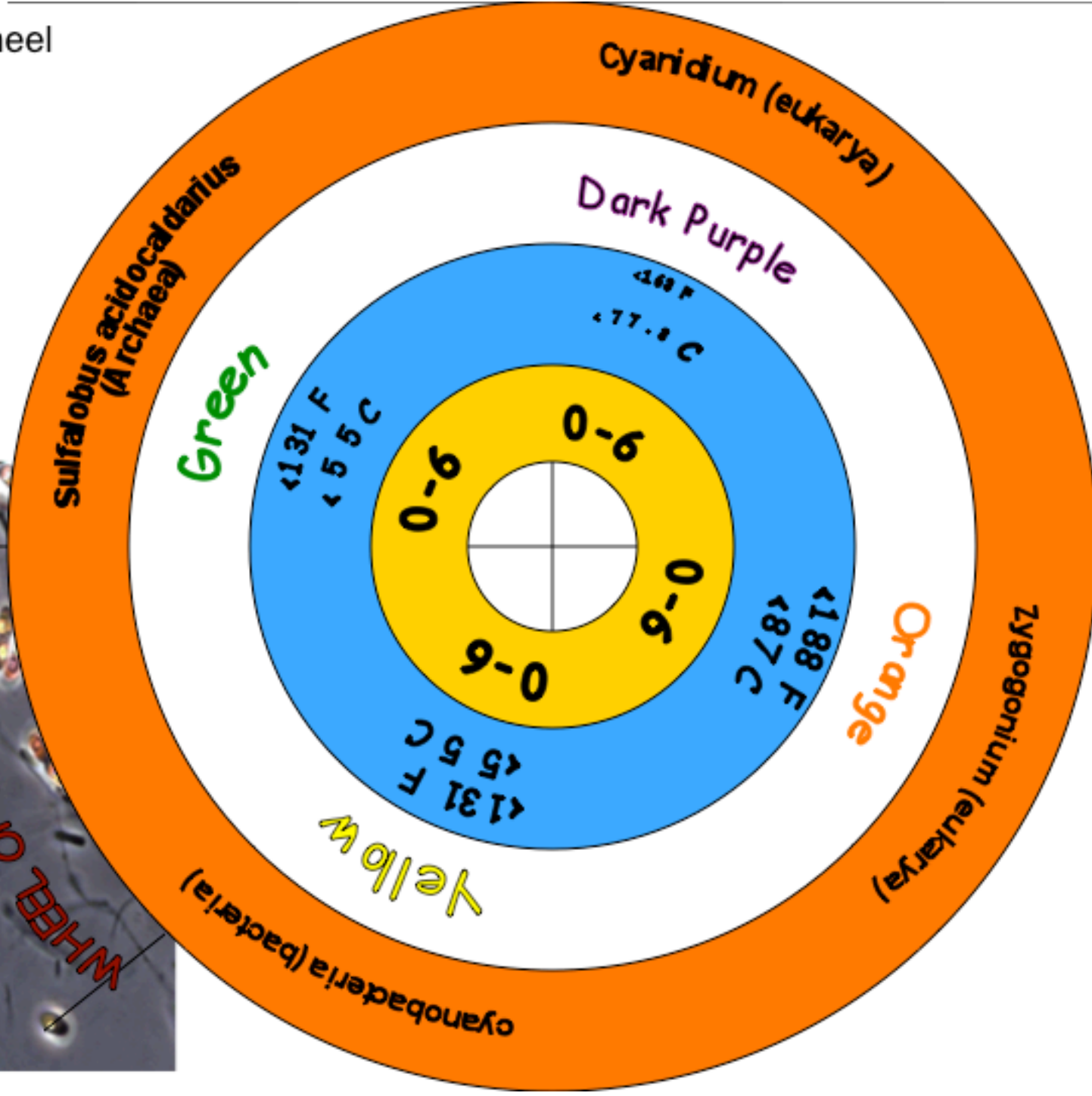
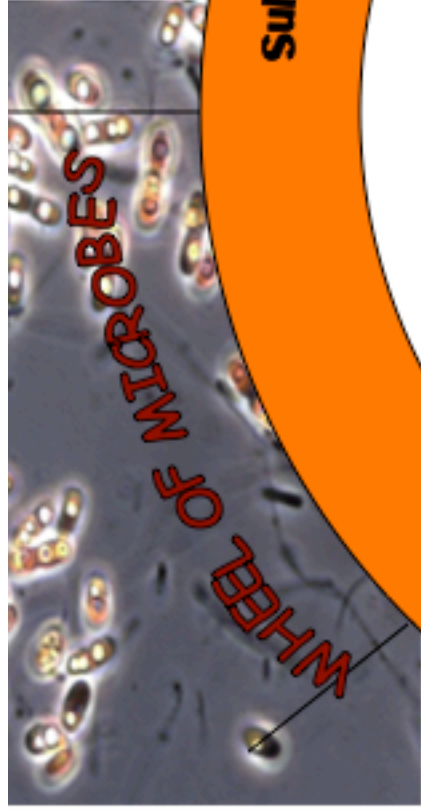
pH:

MICROBE:

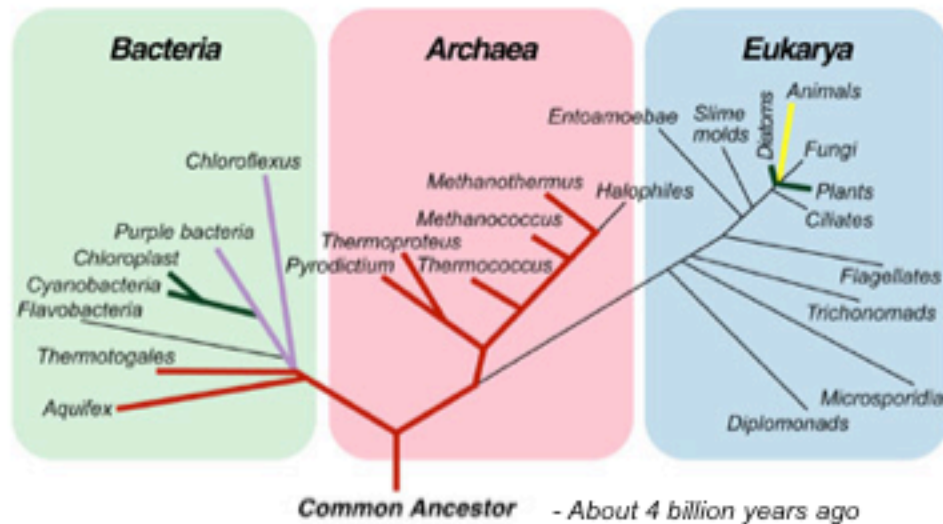
COLOR:



3rd Wheel



TREE OF LIFE



Minerals or Microbes?

The variety of colors you see in the hot spring pools may be due to the presence of minerals or microbes. How can you make a guess without using a microscope?

- Minerals tend to form around the edge of the pools, yet microbes grow out from the source of the pools and along runoff channels.
- Mineral deposits look crystalline or hard, whereas microbes look spongy, soft, or wavy.