

216 Sage Circle, Riverton, Wyo., 82501

Oil Shale Plant, Green River,  
Wyoming.

Dan Miller-WGS-Laramie

Dear Dan,

Here is the picture of the oil shale plant at Green River, Wyoming. This plant was built about 1916 by a Mr. Himes. Several million dollars were involved in what was probably a promotional project. A tank held oil which or at what seems to be a retort must have been retorted not far from the site/and the tank was still standing in 1967. The site is close to Interstate 80 near the tunnel, at the northwest edge of the city.

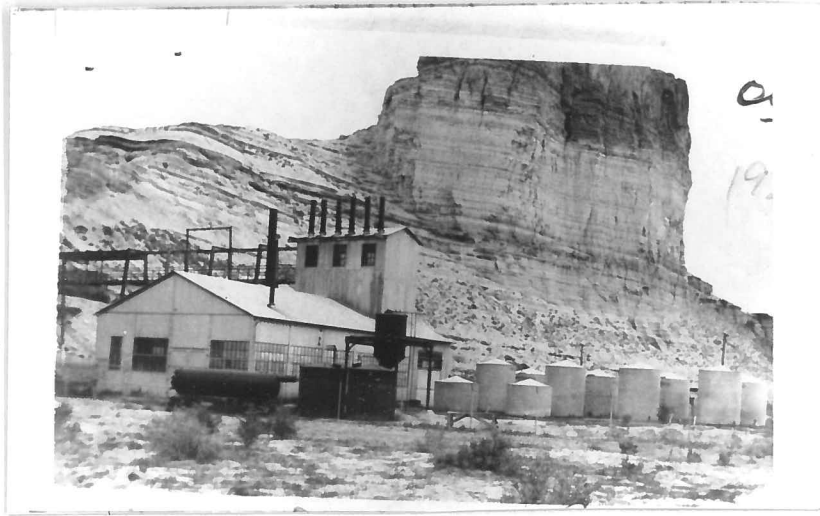
A man who had bought the site in the late 1940's said that he had dumped the oil from the tank but had to wait for a very hot day to get the oil to flow. This sounds like shale oil.

Surrounding Green River are numerous tunnels and adits into the Laney oil shale beds and some are on UP land, however, no one seems to know who dug the mines. A particular opening 100' or so back into the hill near Telephone canyon is on UP property and was used by the USEM for testing a process of electro-linking whereby horizontal holes in the mine were heated by high current-high voltage juice, but the project was not very successful. But, in 1968 or so when I was oil shale mapping I found that the mine was dug, not in the Laney, but in the underlying Wilkins Peak formation.. The Wilkins Peak has some oil shale, but the best is quite thin and and stratigraphically below the mine level. In other words the mine was not in good oil shale.

It was certainly good to see you again after all these past years. We went to Meeker after leaving Laramie and found a real boom situation. Came back to Riverton on Wednesday.

Sincerely

  
Edward R. McAuslan



1916 construction  
Ed McAuslan Oil shale Refining Green River, Wyo.

B 0 0 3 2 1 1