

THE GEOLOGICAL SURVEY OF WYOMING

Gary B. Glass, State Geologist

OPEN FILE REPORT 87-11

PRELIMINARY MAP OF KNOWN SURFICIAL STRUCTURAL  
FEATURES FOR THE PRESTON 1° x 2° QUADRANGLE

compiled by

Phillip L. Greer, Jon K. King, and Alan J. VerPloeg

Laramie, Wyoming  
1987

This report has not been reviewed for conformity with the editorial standards of the Geological Survey of Wyoming.

This listing of sources of information and index map were prepared to accompany the preliminary map of known surficial structural features for the Preston 1° x 2° Quadrangle.

### Sources of geologic data

#### General

(These references are the sources of geologic data where more detailed, specific maps were not available).

**Blackstone, D.L., Jr., and VerPloeg, A.J., 1981, Tectonic map of the overthrust belt, western Wyoming, southeastern Idaho, and northeastern Utah: Geological Survey of Wyoming Report of Investigations 21, plate 1, scale 1:316,800.**

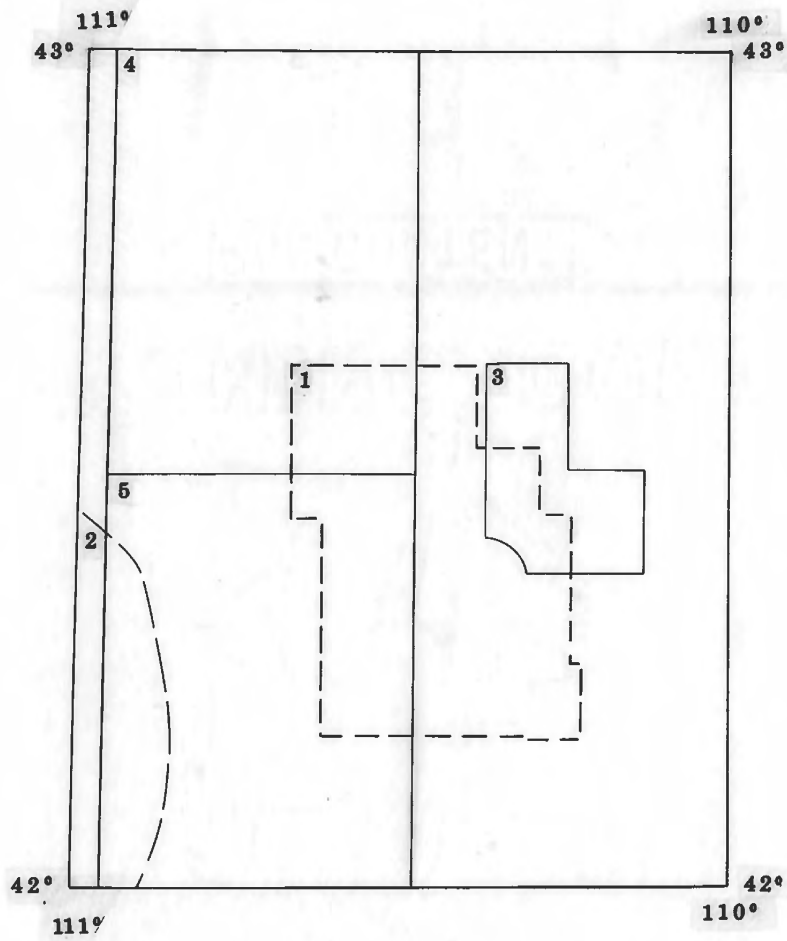
**Case, J.C., 1986, Earthquakes and related geologic hazards in Wyoming: Geological Survey of Wyoming Public Information Circular 26, 22 p., sheet 1, scale 1:1,000,000.**

**Love, J.D., and Christiansen, A.C., 1985, Geologic map of Wyoming: U.S. Geological Survey, scale 1:500,000.**

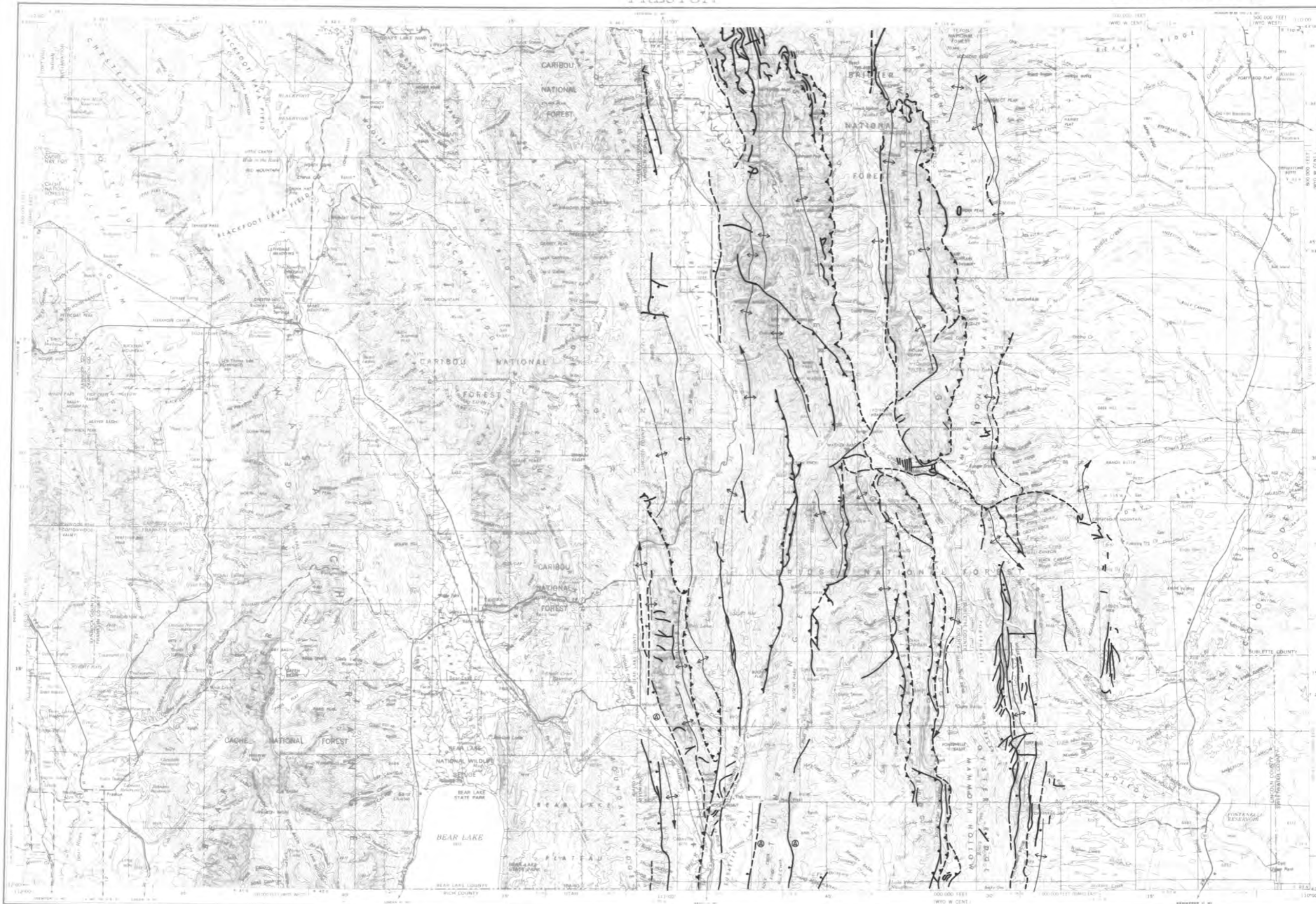
**Oriel, S.S., and Platt, L.B., 1980, Geologic map of the Preston 1° x 2° Quadrangle, southeastern Idaho and western Wyoming: U.S. Geological Survey Miscellaneous Investigations Series Map I-1127, scale 1:250,000.**

#### Specific

1. **Blackstone, D.L., Jr., 1979, Geometry of the Prospect-Darby and LaBarge faults at their junction with the LaBarge platform, Lincoln and Sublette Counties, Wyoming: Geological Survey of Wyoming Report of Investigations 18, plate 1, scale approximately 1:120,000.**
2. **Coogan, J.C., 1987, University of Wyoming Department of Geology and Geophysics, thesis mapping in progress, scale 1:24,000.**
3. **Privrasky, N.C., 1963, Geology of the Big Piney area, Sublette County, Wyoming: U.S. Geological Survey Oil and Gas Investigations Map OM-205, scale 1:31,680.**
4. **Rubey, W.W., 1973, Geologic map of the Afton Quadrangle and part of the Big Piney Quadrangle, Lincoln and Sublette Counties, Wyoming: U.S. Geological Survey Miscellaneous Geologic Investigations Map I-686, scale 1:62,500.**
5. **Rubey, W.W., Oriel, S.S., and Tracey, J.I., Jr., 1980, Geologic map and structure sections of the Cokeville 30-minute Quadrangle, Lincoln and Sublette Counties, Wyoming: U.S. Geological Survey Miscellaneous Investigations Series Map I-1129, scale 1:62,500.**



**Index To Sources Of Geologic Data**



- EXPLANATION**
- Anticline**—arrows perpendicular to axis show symmetry, i.e., short arrow indicates flank with steeper dip. Axis is dashed where covered or approximately located. Arrow on axis indicates direction of plunge.
  - Overtured Anticline**
  - Normal Faults**—ball on downthrown block (dashed where covered or approximately located). Queried where existence is questionable.
  - Thrust/Reverse Faults**—teeth on upthrown block (dashed where covered or approximately located). Queried where existence is questionable.
  - Possible Active Fault**—as identified by Case (1986).

THIS MAP WAS COMPILED FROM THE MOST RECENT AVAILABLE INFORMATION AND IS ONLY AS RELIABLE AND COMPLETE AS THE SOURCES CONSULTED. SOME SMALLER FEATURES WERE OMITTED SINCE THEY COULD NOT BE PLOTTED AT THIS SCALE. SOURCES CONSULTED ARE LISTED IN ACCOMPANYING REFERENCE LIST.

BASE MAP FROM THE U.S. GEOLOGICAL SURVEY, 1982  
 THIS MAP HAS NOT BEEN REVIEWED FOR CONFORMITY WITH THE EDITORIAL STANDARDS OF THE GEOLOGICAL SURVEY OF WYOMING.

**PRELIMINARY MAP OF KNOWN SURFICIAL STRUCTURAL FEATURES OF THE PRESTON 1° x 2° QUADRANGLE**  
 COMPILED BY PHILLIP L. GREER, JON K. KING, AND ALAN J. VER PLOEG