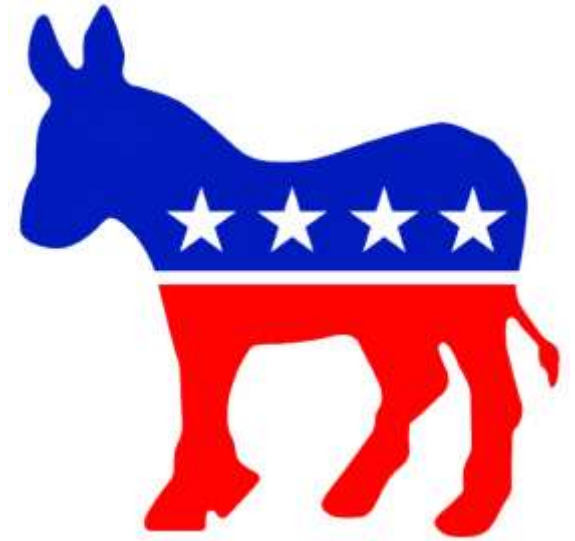


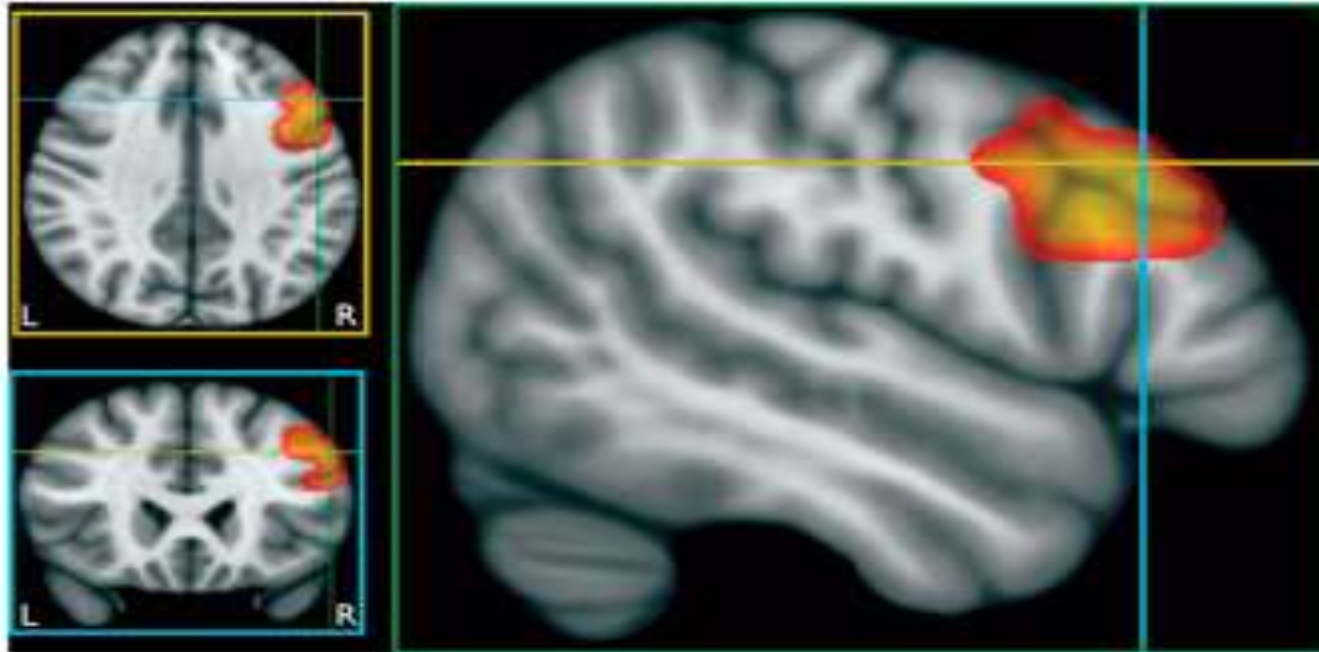
A Relationship
between Political
Conservatism and
Behavioral
Approach System
Drive



- Political orientation is the form of conscious political thinking of a group or individual.
- Can be ideology based (liberal versus conservative)
- Or partisanship based (Democrat or Republican).
- There is a growing body of research studying the relationship between political orientation and individual differences in temperament.

BIS activation shown in EEG

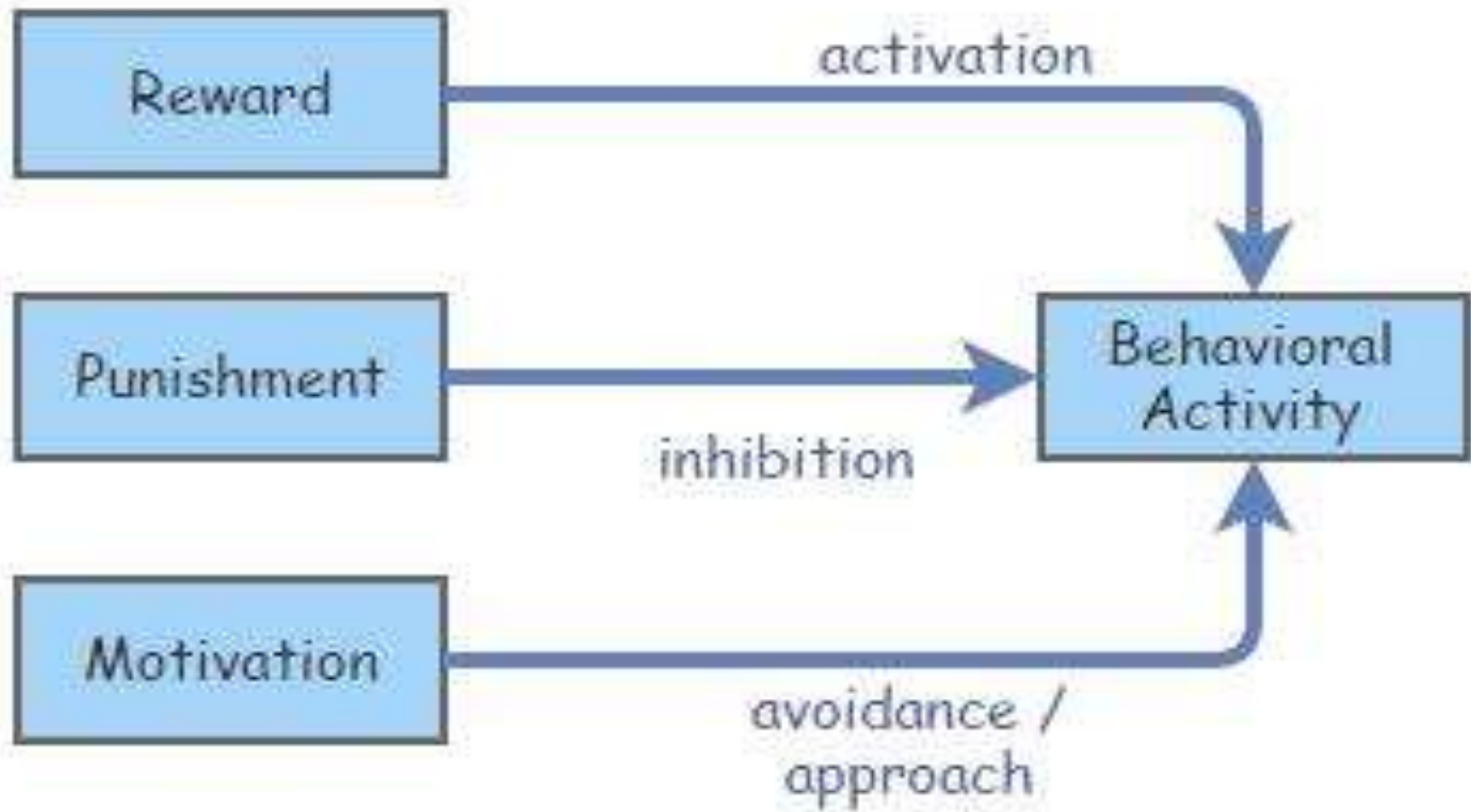
a



- One theory about a certain dimension of temperament commonly studied is BIS (behavioral inhibition system) and BAS (behavioral approach system).
- Those who are more BIS oriented have a negative affect, which is characterized by sadness, anxiety, and fear of punishment (Pascalis et al., 2013).
- Those who are more BAS oriented have a positive affect, which is characterized by happiness, impulsivity, optimism, and reward expectations.



https://en.wikipedia.org/wiki/Chevrolet_Camaro



THE BIG FIVE:

★ **Openness**

★ **Conscientiousness**

Extraversion

Agreeableness

Neuroticism

Pratto, Sidanius, Stallworth, and Malle (1994):

- Social Dominance orientation (SDO) is a measure of the how much one agrees with inequality, when that inequality leads to one group dominating over another.
- People who score highly on SDO have less concern for others, lower altruism, and less tolerance.
- SDO was positively correlated with conservatism.

Janoff-Bulman (2015):

- Politically conservative people tend toward protecting group members from danger.
- Politically liberal individuals tend toward providing for the welfare of group members and society.
- Especially apparent in times of serious danger when people tend to become more conservative.



Janoff-Bulman, Sheikh, and Baldacci (2007):

Moral Motives: Self-reliance, self-restraint, social justice, and social order.

Self-restraint and social order are avoidance-orientated measures

Self-reliance and social justice are approach-orientated items.

Conservative students had significantly higher avoidance motives scores and lower scores on social justice motives.

Self-reliance was positively associated with social justice for liberal students, and negatively associated with social justice for conservative students.

The findings generally suggest an approach orientation for liberal students but not conservative students.

Why was this study done?



--The research in the area is limited and the results are mixed.

--The findings of past studies have not been replicated in the past few years.

--Current political issues remind us that it is important to figure out what motivates political decisions.

HYPOTHESIS:

People who score highly on BAS-Drive will score highly on conservatism and those who score highly on BIS will also score highly on liberalism.

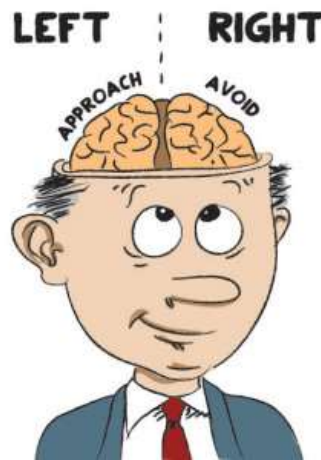


Current Study

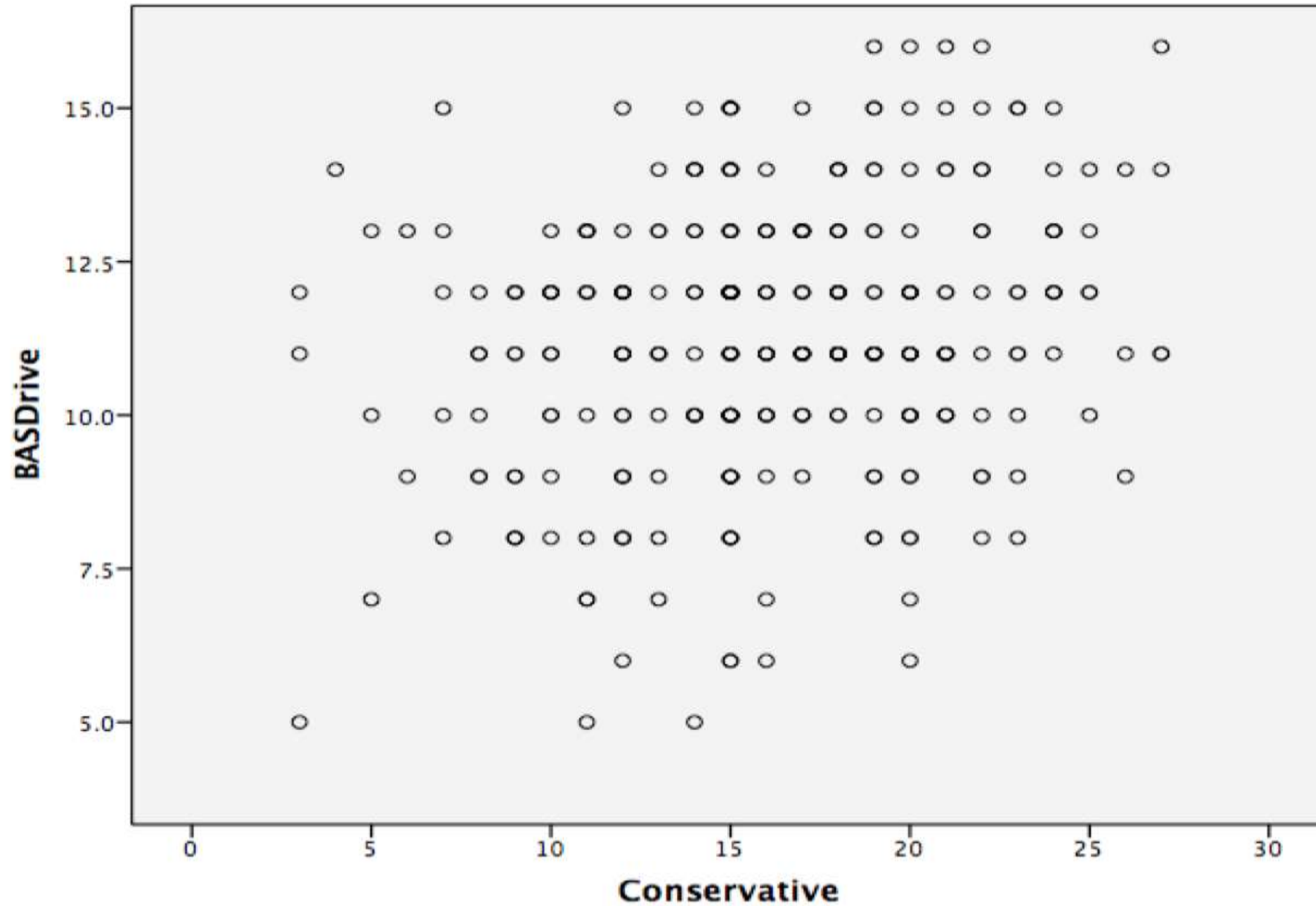
- Study one included 317 UW students who were tested for approach and avoidance tendencies and self-reported political identity (more conservative or more liberal).

Study 1 Question: Is there a relationship between approach or avoidance orientation and political orientation?

Findings: There was a significant positive relationship between the Drive component of BAS and a more conservative political orientation.



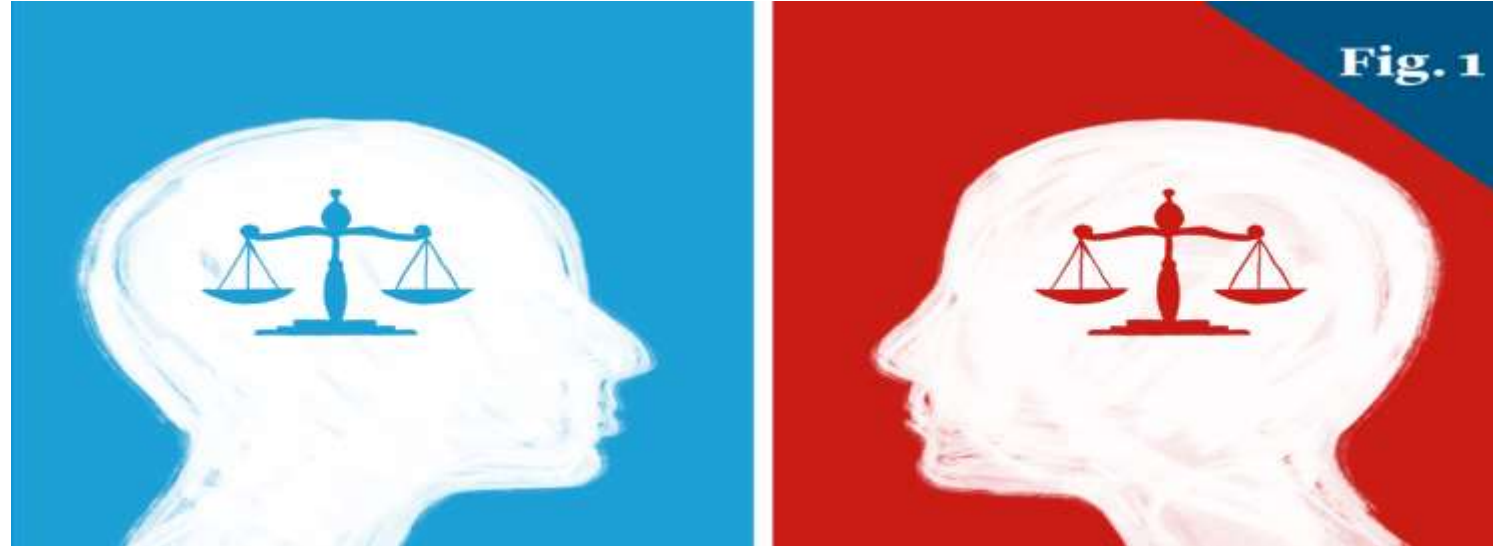
Study 1 Correlation



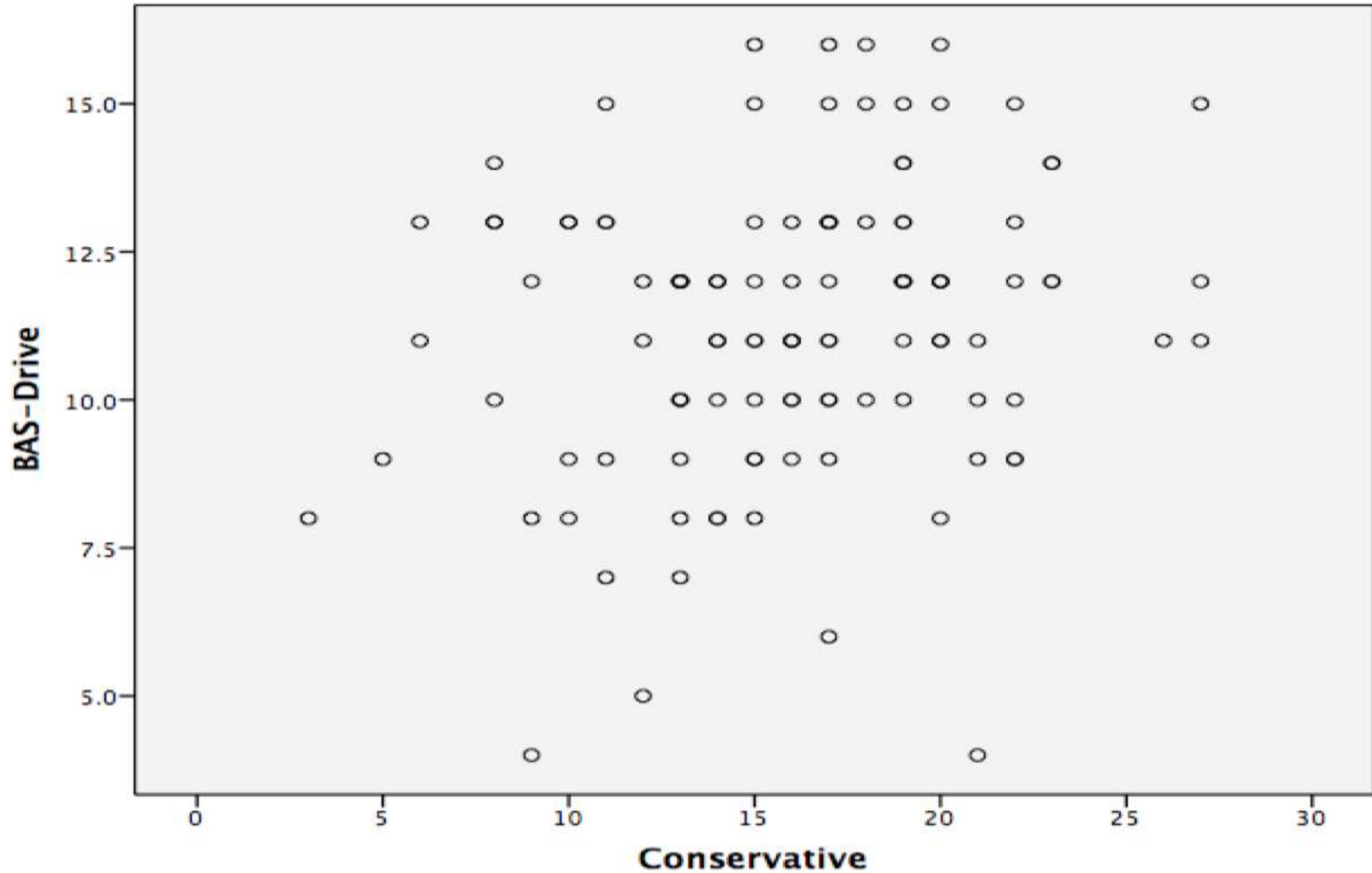
- Study two included 113 UW students who took the study online.
- The goal was to replicate our initial finding and measure temperament and moral beliefs in relationship to political orientation.

Question 2: Are conservative moral motivations and societal views related to BIS or BAS?

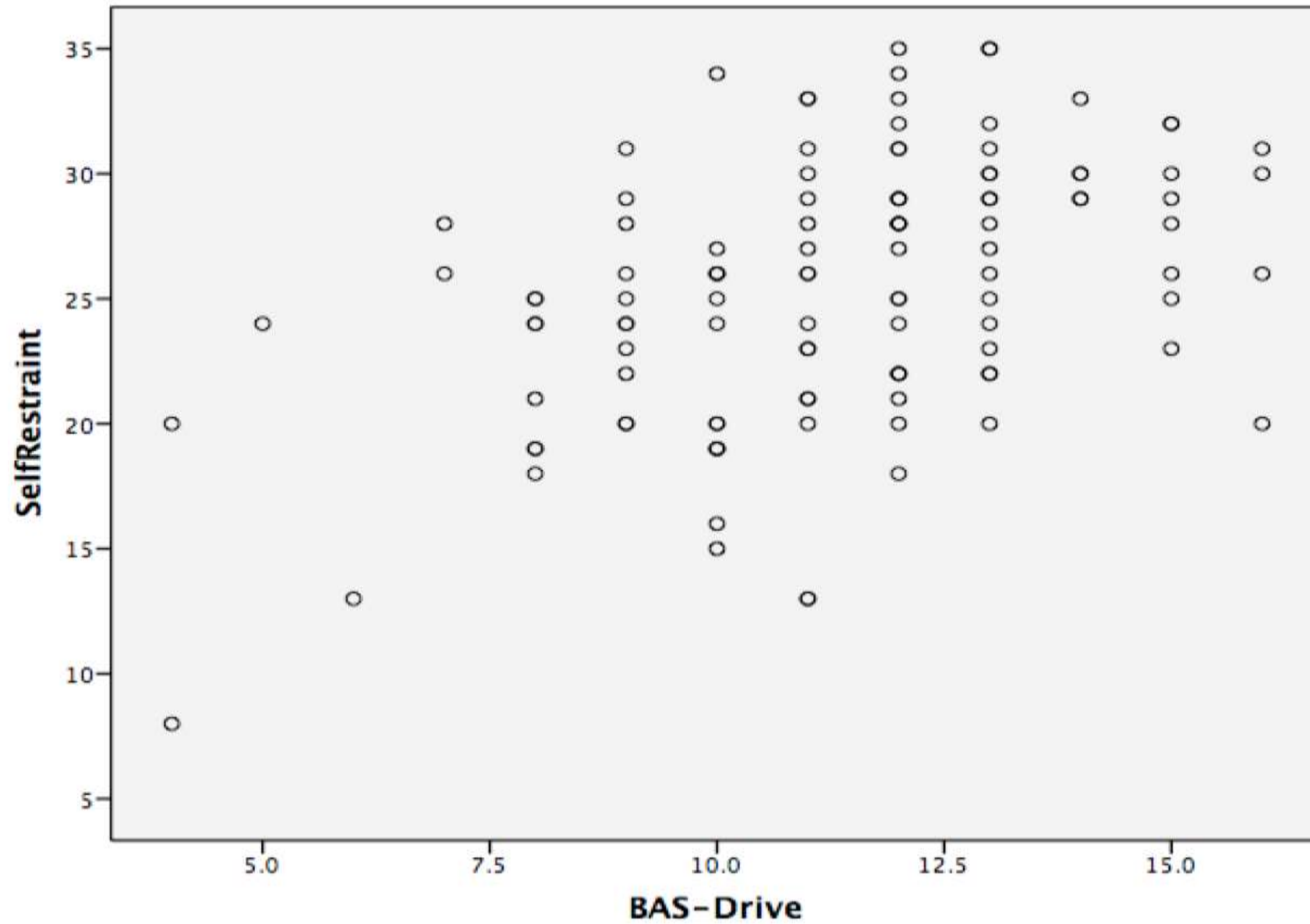
Findings: BAS-Drive was correlated with both self-restraint and self-reliance as well as a pro social dominance orientation.



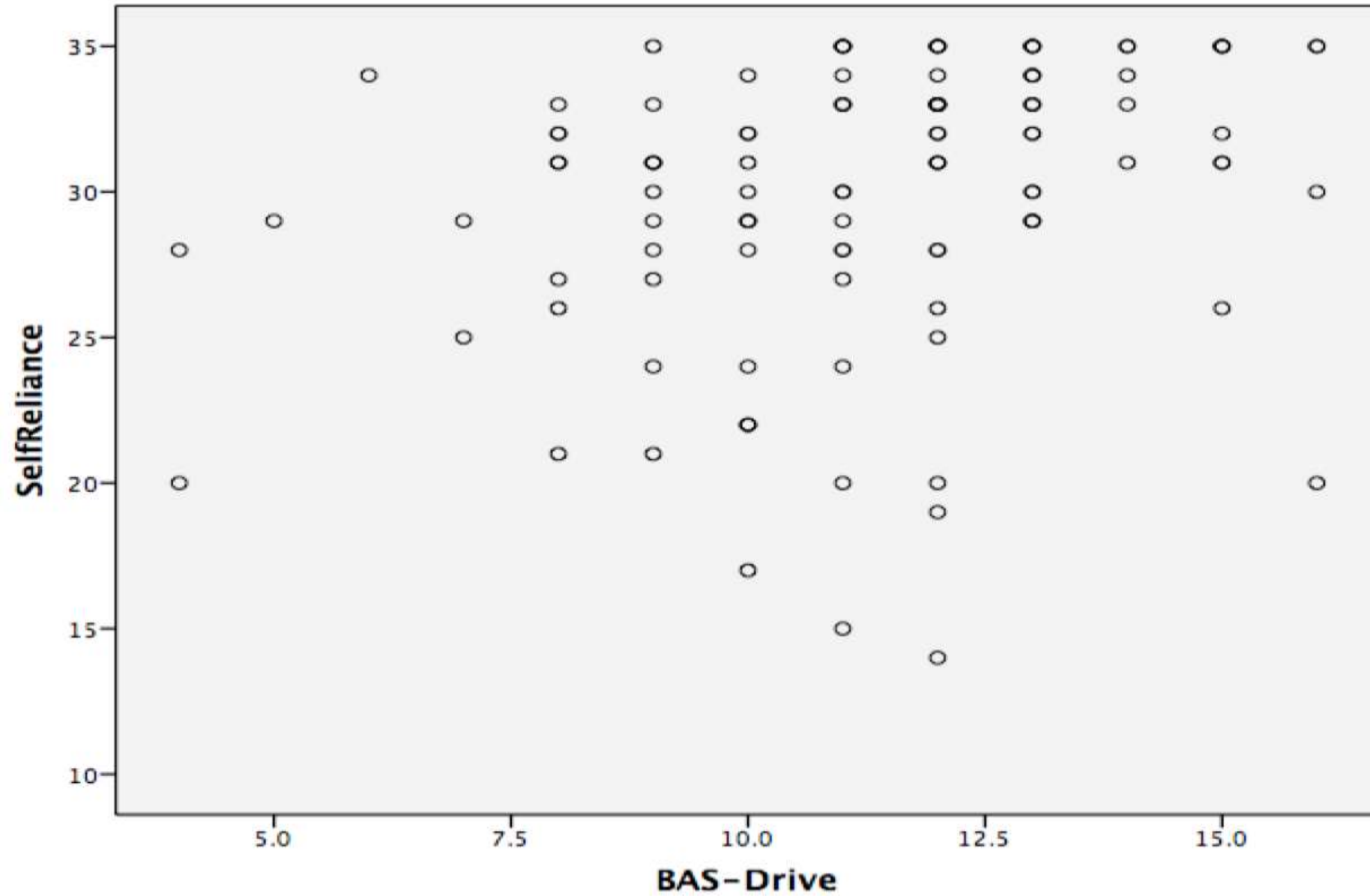
Study 2 Correlation



Study 2: Self-Restraint and BAS-Drive



Study 2: Self-Reliance and BAS-Drive



Future directions:

- This study should be replicated.
- More studies should be done that break BAS down into its three subcomponents.
- EEG data should be collected.

This study was done to increase the overall understanding of how personality and temperament can affect political orientation.



References

Bruno Dubuc. Douglas Hospital Research Center. September 2002. http://thebrain.mcgill.ca/flash/a/a_03/a_03_p/a_03_p_que/a_03_p_que.html

<http://study.com/academy/lesson/what-is-a-behavioral-activation-system.html> © copyright 2003- 2016 Study.com.

Janoff-Bulman, R. (2015). To Provide or Protect: Motivational Bases of Political Liberalism and Conservatism. *Psychological Inquiry*, 20, 120-128.

Janoff-Bulman, R., Sheikh, S., & Baldacci, K.G. (2007). Mapping moral motives: Approach, avoidance, and political orientation. *Journal of Experimental Social Psychology*, 44, 1091-1099.

Carney, D.R., Jost, J.T., Gosling, S.D., & Potter, J. (2008). The Secret Lives of Liberals and Conservatives: Personality Profiles, Interaction Styles, and the Things They Leave Behind. *Political Psychology*, 29, 811-831.

Gable, P.A., Mechin, N.C., Hicks, J.A., & Adams, D.L. (2015). Supervisory control system and frontal asymmetry: neurophysiological traits of emotion-based impulsivity. *Social Cognitive and Affective Neuroscience*, 1-6.

Pratto, F., Sidanius, J., Stallworth, L.M., Malle, B.F. (1994). Social Dominance Orientation: A Personality Variable Predicting Social and Political Attitudes. *Journal of Personality and Social Psychology*, 67, 741-763.

Rock, M.S., Janoff-Bulman, R. (2010). Where Do We Draw Our Lines? Politics, Rigidity, and the Role of Self-Regulation. *Social Psychology and Personality Science*, 1, 26-33.

Wolak, J. & Marcus, G.E. (2007). Personality and Emotional Response: Strategic and Tactical Responses to Changing Political Circumstances. *American Academy of Political and Social Science*, 614, 172-195.

Zettler, I. & Hilbig, B. E. (2009). Attitudes of the selfless: Explaining political orientation with altruism. *Personality and Individual Differences*, 48, 338-342.