

# Women in *Agriculture*

---

Honors Program Senior Thesis

Eilish Hanson

# Prevalence of Women in Agriculture

---

1. Women as principle operators of farms
2. Attainment of Agricultural Bachelor's, Master's, and Doctorate Degrees
3. Women in faculty labor force in agricultural programs



# Background

---

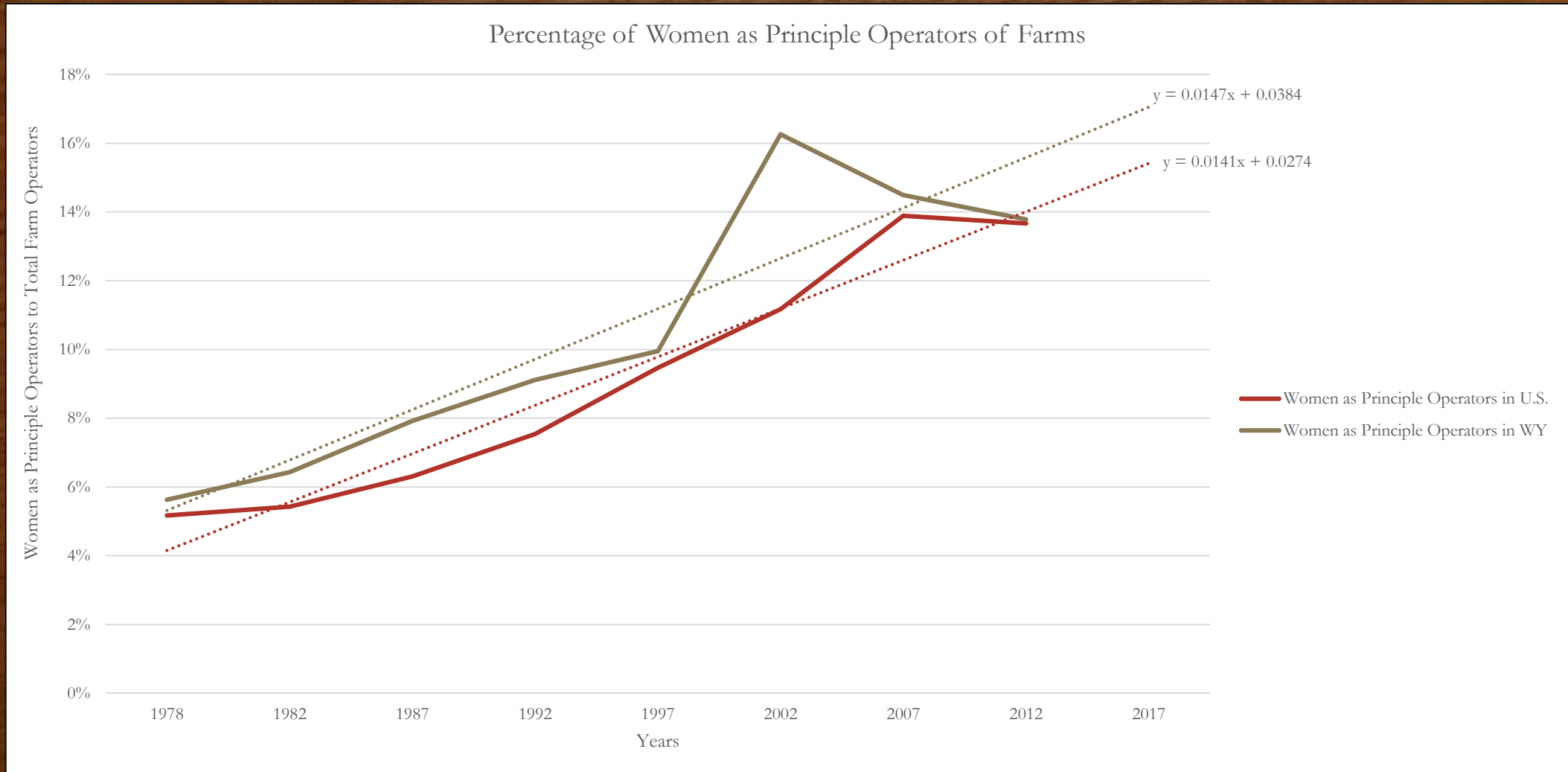
- Hunter-gatherer responsibilities – circa 10,000 B.C.
- Industrial Revolution
  - Invention of the plow negatively impacted women's involvement.
- World War II
  - Impacts on labor force
- Agricultural intensification
  - Decreased number of farms
  - Increased number of acres per farm

# Methodology

---

- 1977-2016
- USDA Census of Agriculture – Historical Archives
  - Women as principle operators of farms
- National Center for Education Statistics
  - Number of agricultural degrees conferred to women in U.S.
- Office of Institutional Analysis – University of Wyoming
  - Number of agricultural degrees conferred to women at UW
- Faculty employment assumption
  - Labor force of faculty exclusive to Doctorate Degree graduates

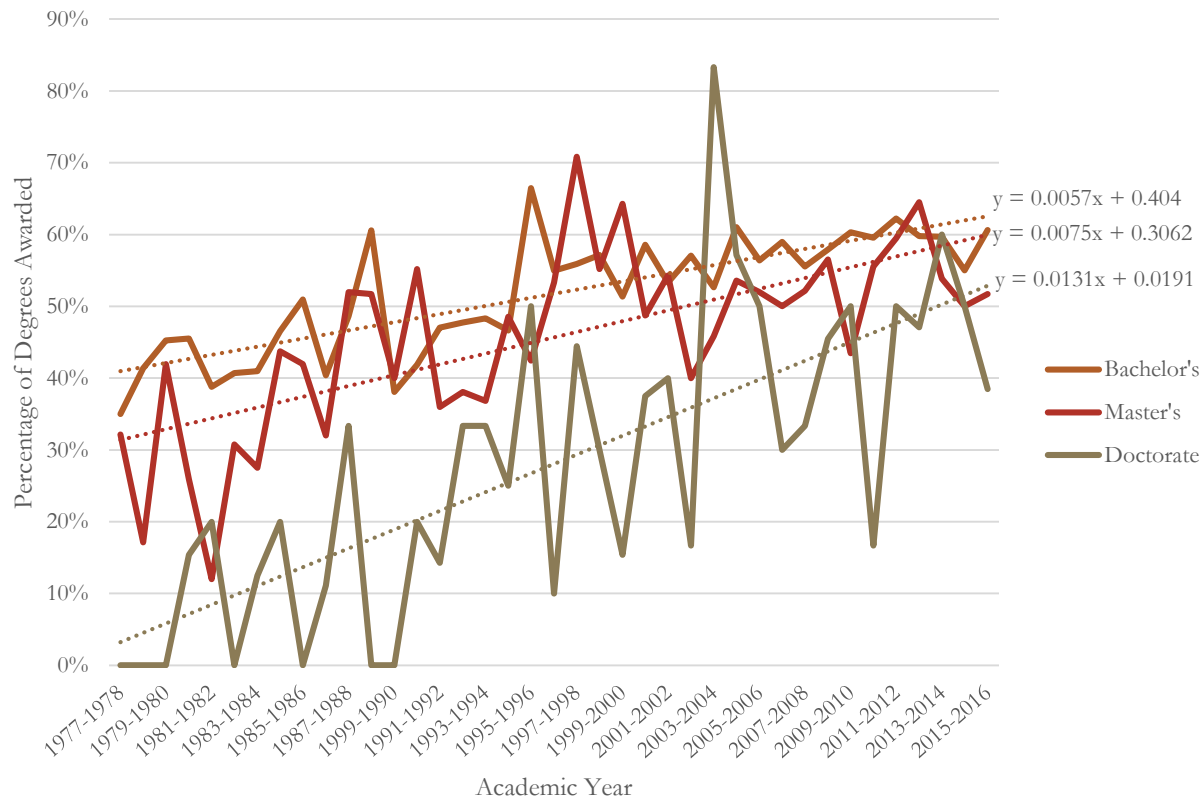
# Women as Principle Operators



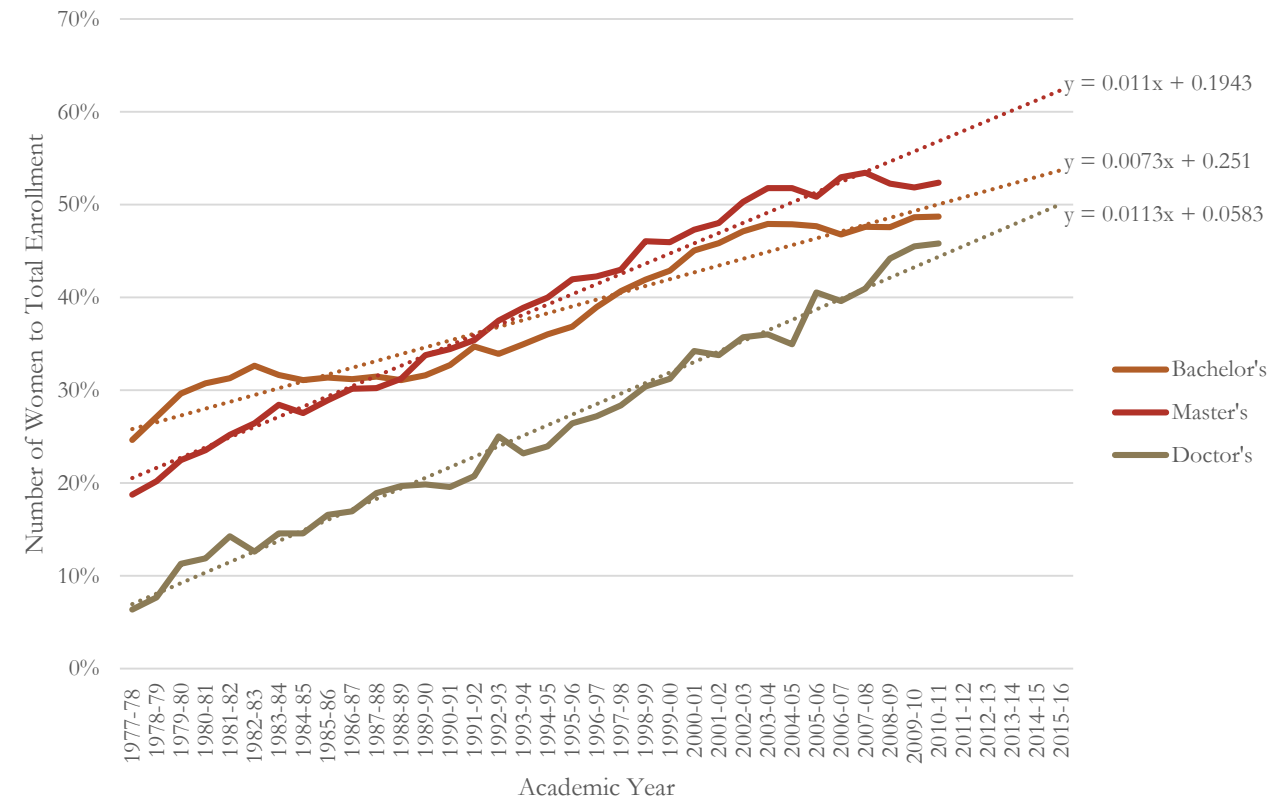


# Percentage of Degrees Conferred to Women

## Percentage of Agricultural Degrees Awarded to Women at UW

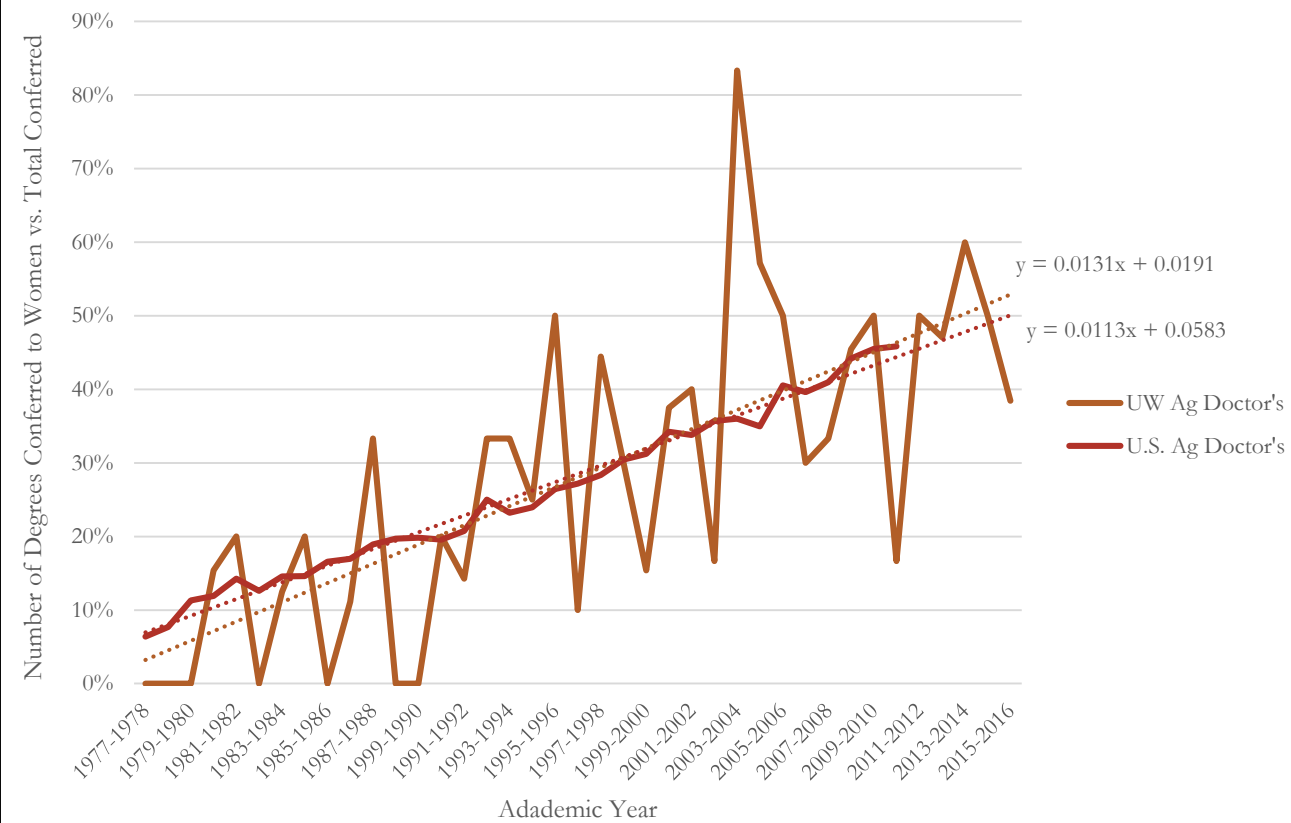


## Percentage of Agricultural Degrees Awarded to Women in U.S.

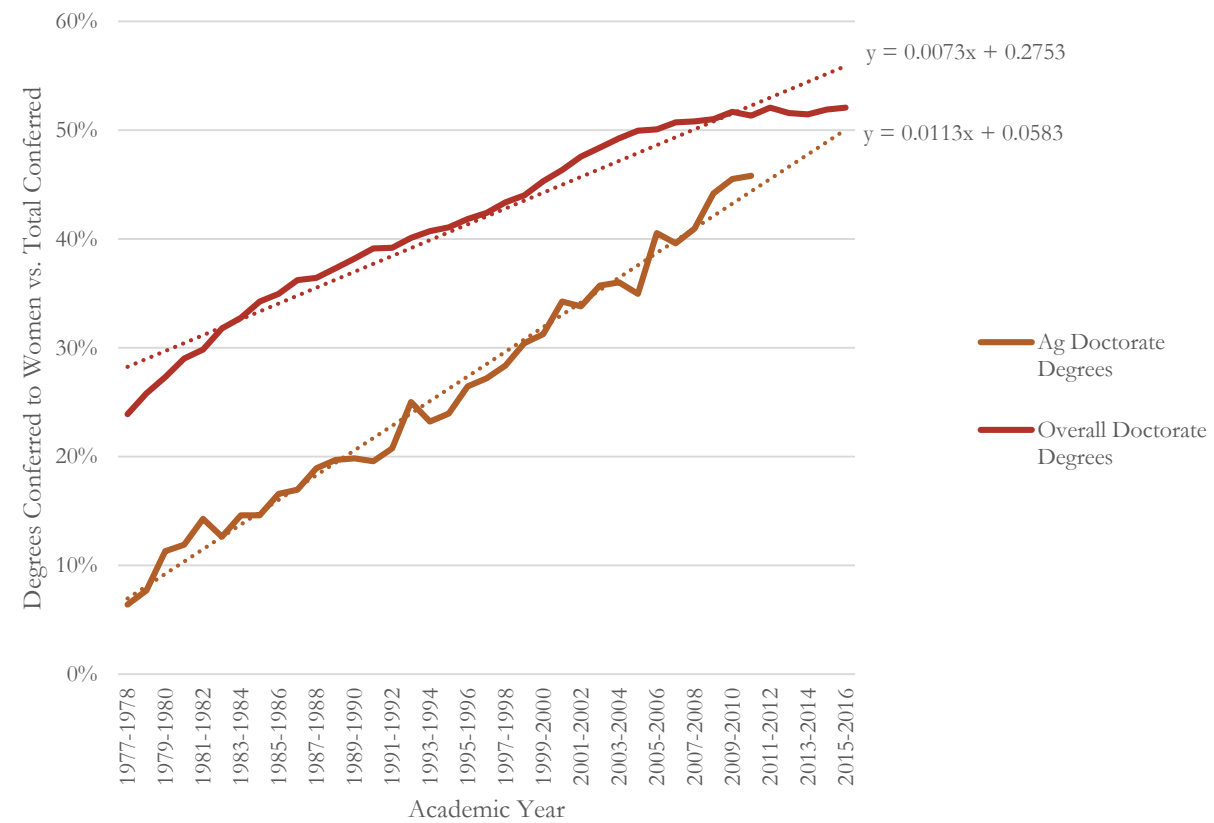


# Women in Faculty Labor Force

## Percentage of Agricultural Doctorate Degrees Conferred to Women



## Percent of Doctorate Degrees Conferred to Women in U.S.



# Conclusions

---

- Continuously evolving gender roles inflict impact on prevalence
- Increasing prevalence in agriculture
- Positive outlook