

Appendix 2. Photographs from the potential Deep Creek Research Natural Area.

## PHOTOGRAPHIC RECORD

(See FSM 1643.52)

George Jones

HEADQUARTERS UNIT

LOCATION

## INITIAL DISTRIBUTION OF PRINTS AND FORM 1600-1:

 WO RO DIV. FOREST DISTRICT PHOTOGRAPHER

Date \_\_\_\_\_

INSTRUCTIONS: Submit to Washington Office in quadruplicate. Permanent numbers will be assigned and the forms will be distributed as follows: (1) Washington Office, (2) RO or Station, (3) Forest or Center and (4) Photographer.

PHOTOGRAPH NUMBER		SELECTED FOR W.O. PHOTO LIBRARY	DATE OF EXPOSURE	LOCATION (State, Forest, District and County)	CONCISE DESCRIPTION OF VIEW	NEGATIVE (Show size and DW for black and white or C for color)
TEMP.	PERMANENT (To be filled in by the WFO)					
(1)	(2)	(3)	(4)	(5)	(6)	(7)
1,5				Wyoming, Medicine Bow, Hayden District, Carbon Co.	Idaho fescue - bluebunch wheatgrass grassland on SW-facing slope with shallow soil.	35 mm C
1,4				Deep Cr. potential RNA	Mountain big sagebrush / Nelson's needlegrass shrub stand on SW-facing slope.	
1,18					S-facing slope with aspen / elk sedge forest in draw, mosaic of mountain big sagebrush / Nelson's needlegrass shrub vegetation and Idaho fescue - bluebunch wheatgrass vegetation on convex slopes, and a mix of lodgepole pine woodland and aspen / elk sedge forest at the top of the slope.	
,9					S-facing slope with mountain big sagebrush vegetation in the foreground and aspen woodland / elk sedge vegetation at the base of the slope, and lodgepole pine woodland on N-facing slopes in the distance.	

## PHOTOGRAPHIC RECORD

(See FSM 1643.52)

INITIAL DISTRIBUTION OF PRINTS AND FORM 1600-11

 WO RO DIV. FOREST DISTRICT PHOTOGRAPHER

Date \_\_\_\_\_

INSTRUCTIONS: Submit to Washington Office in quadruplicate. Permanent numbers will be assigned and the forms will be distributed as follows: (1) Washington Office, (2) RO or Station, (3) Forest or Center and (4) Photographer.

PHOTOGRAPH NUMBER		SELECTED FOR W.O. PHOTO LIBRARY	DATE OF EXPOSURE	LOCATION (State, Forest, District and County)	CONCISE DESCRIPTION OF VIEW	NEGATIVE (Show size and DW for black and white or C for color)
TEMP.	PERMANENT (To be filled in by the IFO)					
(1)	(2)	(3)	(4)	(5)	(6)	(7)
1, 20				Wyoming, Medicine Bow NF, Hayden District, Carbon Co.  Deep Cr. potential RNA.	<u>George Jones photo</u>  S-facing slope with aspen / elk sedge woodland in the foreground; <del>the</del> higher slopes in background sup- port lodgepole pine woodland.	35 mm C
2, 1					<u>Walt Fertig photos</u>  SW-facing valley with lodgepole pine woodland on higher slopes, and aspen/elk sedge woodland (with subalpine fir in the overstory) in the foreground.	none
2, 2					Clustered lady-slipper ( <u>Cypripedium fasciculatum</u> )	
2, 3					Clustered lady-slipper habitat in lodgepole pine/ grouse whortleberry wood- land.	



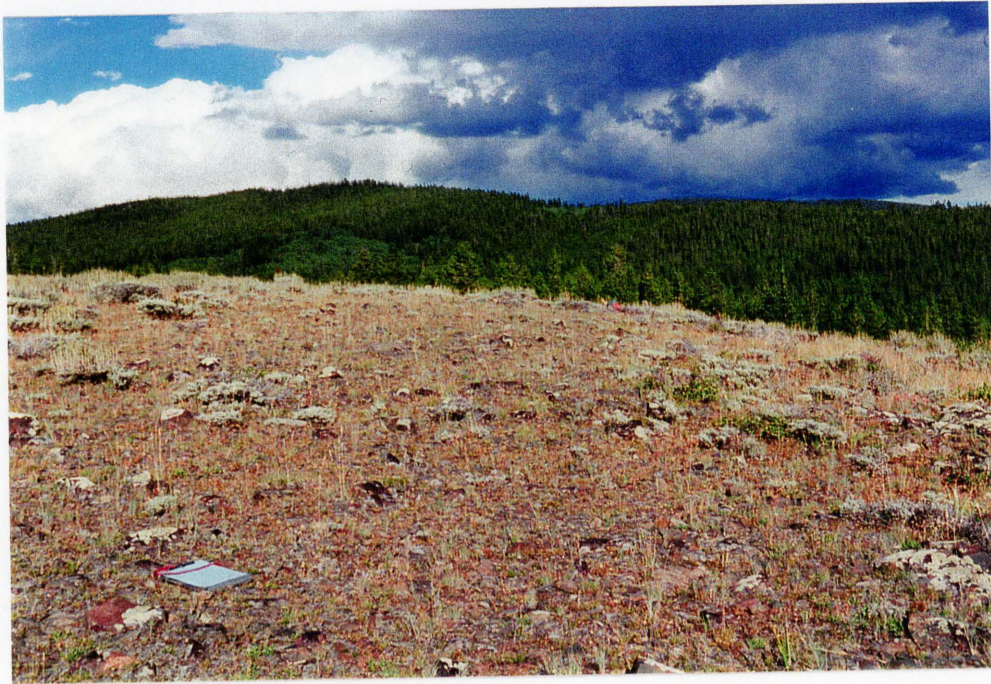
1,9



1,20



2,1



1,5



1,4



1,8



Z, 2



Z, 3