

UNNAMED COPPER PROSPECT AT GRANITE, LARAMIE COUNTY, WYOMING

by  
W. Dan Hausel  
1983

A copper prospect located in amphibolites on the north side of the South Fork of South Crow Creek in the NE $\frac{1}{4}$  section 12, T13N, R70W contained visible silicification, malachite, and chrysocolla. The prospect pit is on the Granite 7 $\frac{1}{2}$ -minute quadrangle (Figure 1).

A selected sample of copper-stained amphibolite was collected for assay and yielded 0.86 percent copper, 0.02 ounces of silver, and less than 0.01 ounces of gold per ton (Figure 2). The mineralized rock appears to be limited to a small, narrow, mylonite zone.

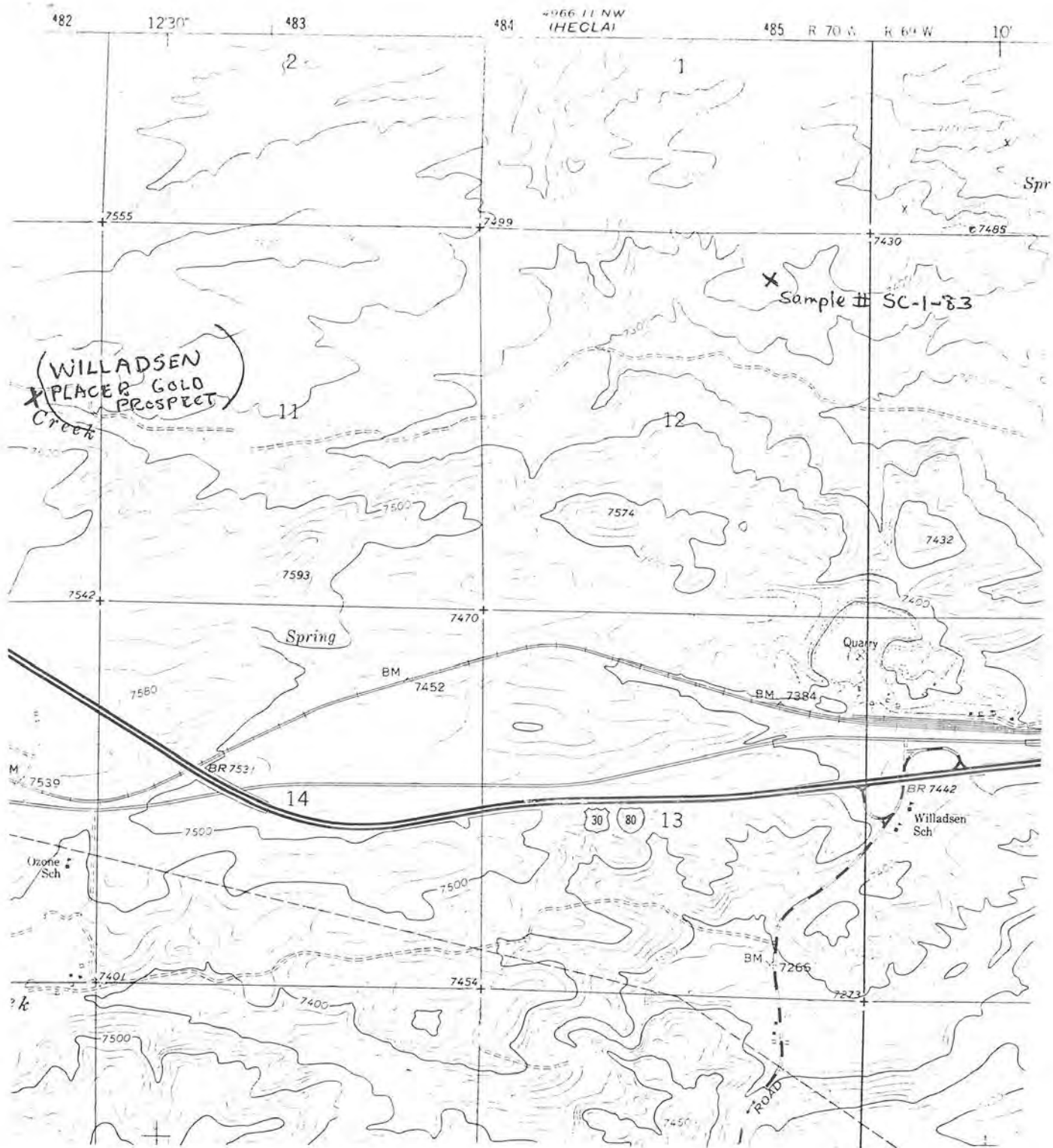
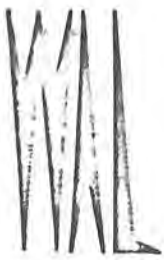


Figure 1. Location map of unnamed copper prospect on the U.S. Geological Survey Granite 7½-minute quadrangle.



# WYOMING ANALYTICAL LABORATORIES, INC.

~~Box 629~~ • 605 South Adams

(307) 742-7995

LARAMIE, WYOMING 82070

Dan Hausel  
Wyoming Geological Survey  
Box 3395, University Station  
Laramie, WY 82071


Request No.: 1852  
Date: December 14, 1983

## REPORT OF ANALYSIS

Customer ID SC-1-83, 10/20/83  
Lab No. A2096

---

Gold	oz/ton	< 0.01
Copper	wt. %	0.86
Silver	oz/ton	0.02

  
Sonja G. Ringen  
Laboratory Supervisor

---

Figure 2. Assay report of selected mineralized amphibolite from a prospect pit in the NE $\frac{1}{4}$  sec. 12, T13N, R70W.

---